

**VGCM AD 2.1 AERODROME LOCATION INDICATOR AND NAME****VGCM COMILLA STOLPORT, COMILLA.****VGCM AD 2.2 AERODROME GEOGRAFICAL AND ADMINISTRATION DATA**

1	ARP coordinates and site at AD	232615.74N 0911122.26E, RWY centre.
2	Distance and direction from city	03 NM South east Comilla town.
3	AD elevation/reference temperature	25 FT/ 36.9 <sup>0</sup> C
4	MAG VAR	1 <sup>0</sup> W
5	AD administration, address, telephone	Civil Aviation Authority of Bangladesh Postal address: Airport Manager Comilla STOL PORT, Comilla, Bangladesh. Telephone :APM: 880- 81-76119 (Off)
6	Types of traffic permitted IFR/VFR	IFR/VFR
7	Remarks	Nil

**VGCM AD 2.3 OPERATIONAL HOURS**

SL. Nr.	Services	Hours
1	Aerodrome Administration	0900 LT to 1700 LT except FRI & SAT
2	Custom and Immigration	Nil
3	Health and Sanitation	Nil
4	AIS briefing office	Nil
5	ATS Reporting Office (ARO)	HO
6	MET briefing office	HJ
7	Air traffic services	HO
8	Fuelling	Nil
9	Handling	Nil
10	Security	HO
11	De-icing	Nil
12	Remarks	Nil

**VGCM AD 2.4 HANDLING SERVICES AND FACILITIES****NIL****VGCM AD 2.5 PASSENGER FACILITIES****NIL**

**VGCM AD 2.6 RESCUE AND FIRE FIGHTING SERVICES**

2.6.1 The operators, Fire services & civil defense department & CAAB will share responsibility of fire fighting & rescue.

**VGCM AD 2.7 SEASONAL AVAILABILITY CLEANING**

2.7.1 The airport is available for all seasons, Side strips become unusable during monsoon. There is no requirement for clearing.

**VGCM AD 2.8 APRONS, TAXIWAYS AND CHECK LOCATIONS DATA**

1	Apron surface and strength	Surface: Bituminous Concrete Strength: Flexible pavement
2	Taxiway width, surface and strength	Width: Surface: Bituminous Concrete Strength:
3	ACL location and elevation	Not designated
4	Remarks	NIL

**VGCM AD 2.9 SURFACE MOVEMENT GUIDENCE AND CONTROL SYSTEM AND MARKINGS**  
RWY and TWY Markings Are Available

**VGCM AD 2.10 AERODROME OBSTACLES**

1. NDB Mast height 75 ft behind terminal building.

**VGCM AD 2.11 METEOROLOGICAL INFORMATION PROVIDED**

1. Weather information will be provided by the meteorological department at the STOL PORT.

**VGCM AD 2.12 RUNWAYS PHYSICAL CHARACTERISTICS**

Designator RWY NR	TRUE & MAG BRG	Dimensions of RWY (m)	Strength (PCN) and surface of RWY & SWY		THR Coordinates	THR elevation (FT)	Slope of RWY- SWY
			RWY	SWY			
1	2	3	4		5	6	7
16	160 <sup>0</sup>	914 X 30	Flexible Pavement	Brick Soling	-	25	-
34	340 <sup>0</sup>	914 X 30	Bituminous concrete		-	25	

Designation RWY NR	SWY dimensions (m)	CWY dimensions (m)	Strip Dimensions (m)	OFZ	Remarks
8	9	10	11	12	13
16	60x30	60x75	1034x150	Within the CWY	NIL
34	60x30	300x75	1034x150	Within the CWY	NIL

**VGCM AD 2.13 DECLARED DISTANCES**

RWY	TORA(m)	TODA(m)	ASDA(m)	LDA(m)	REMARKS
1	2	3	4	5	6
16	914	974	974	914	NIL
34	914	1214	974	914	NIL

**VGCM AD 2.14 APPROACH AND RUNWAY LIGHTING**

NIL

**VGCM AD 2.15 OTHER LIGHTING, SECONDARY POWER SUPPLY**

INTENTIONALLY BLANK

**VGCM AD 2.16 HELICOPTER LANDING AREA**

As directed by ATC

**VGCM AD 2.17 AIR TRAFFIC SERVICES AIRSPACE**

1	Designation	Aerodrome flight information zone (ATZ)
	Lateral limits	AFIZ is a circle of 5 NM radius centred at RWY centre .
2	Vertical limits	3000 ft (AMSL)
3	Airspace	D
4	Unit/Language	Comilla information
5	Transition altitude	4000 ft
6	Remarks	Nil

**VGCM AD 2.18 AIR TRAFFIC SERVICES COMMUNICATIONS FACILITIES**

Service designator	Call sign	Frequency	Hours of operation	Remarks
1	2	3	4	5
Flight Information Service	Comilla Information	122.9 MHz EM:A3	HO	Nil

**VGCM AD 2.19 RADIO NAVIGATION AND LANDING AIDS**

Type of aid variation	Ident	Frequency	Opr hr	Coordinates	Elevation of transmitting antenna	Remarks
1	2	3	4	5	6	7
D-VOR	CML	115.5 MHz	0001 TO 1600	232601.60 N 0911124.33 E		to meet the requirement of over flying traffic. EM : A2
DME	CML	1189 MHz		232601.60 N 0911124.33 E		
NDB	CM	330 KHz		232610.31 N 0911115.81 E		

**VGCM AD 2.20 LOCAL TRAFFIC REGULATIONS**

Prior information to ATC is needed.

**VGCM AD 2.21 NOISE ABATEMENT PROCEDURES**

Nil

**VGCM AD 2.22 FLIGHT PROCEDURES**

**1. Coordination Procedure:**

**1.1 Departure**

Before passing information required by start-up of engines. Comilla information will be coordinated with Dhaka area control centre regarding flight level and visual meteorological conditions at Tejgaon (When destination is Tejgaon ). Aircraft will not climb higher than 3000 ft if co-ordination cannot be higher altitude by Comilla information or by the aircraft with Dhaka Area Control Centre.

**1.2 Arrival :**

Dhaka area control centre will not issue clearance to the aircraft to descend below 4000 ft without co-ordination with Comilla Information. Dhaka ACC will allow the aircraft to change to Comilla information, when aircraft establish contact with Comilla and is ready to change over.

**VGCM AD 2.23 ADDITIONAL INFORMATION**

**1. Security:** Operators are responsible for security of the aircraft during operation and while aircraft is in parked position.

**VGCM AD 2.24 CHARTS RELATED TO COMILLA STOL PORT**

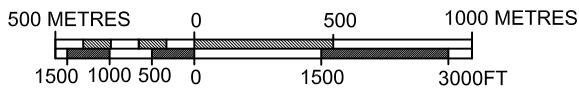
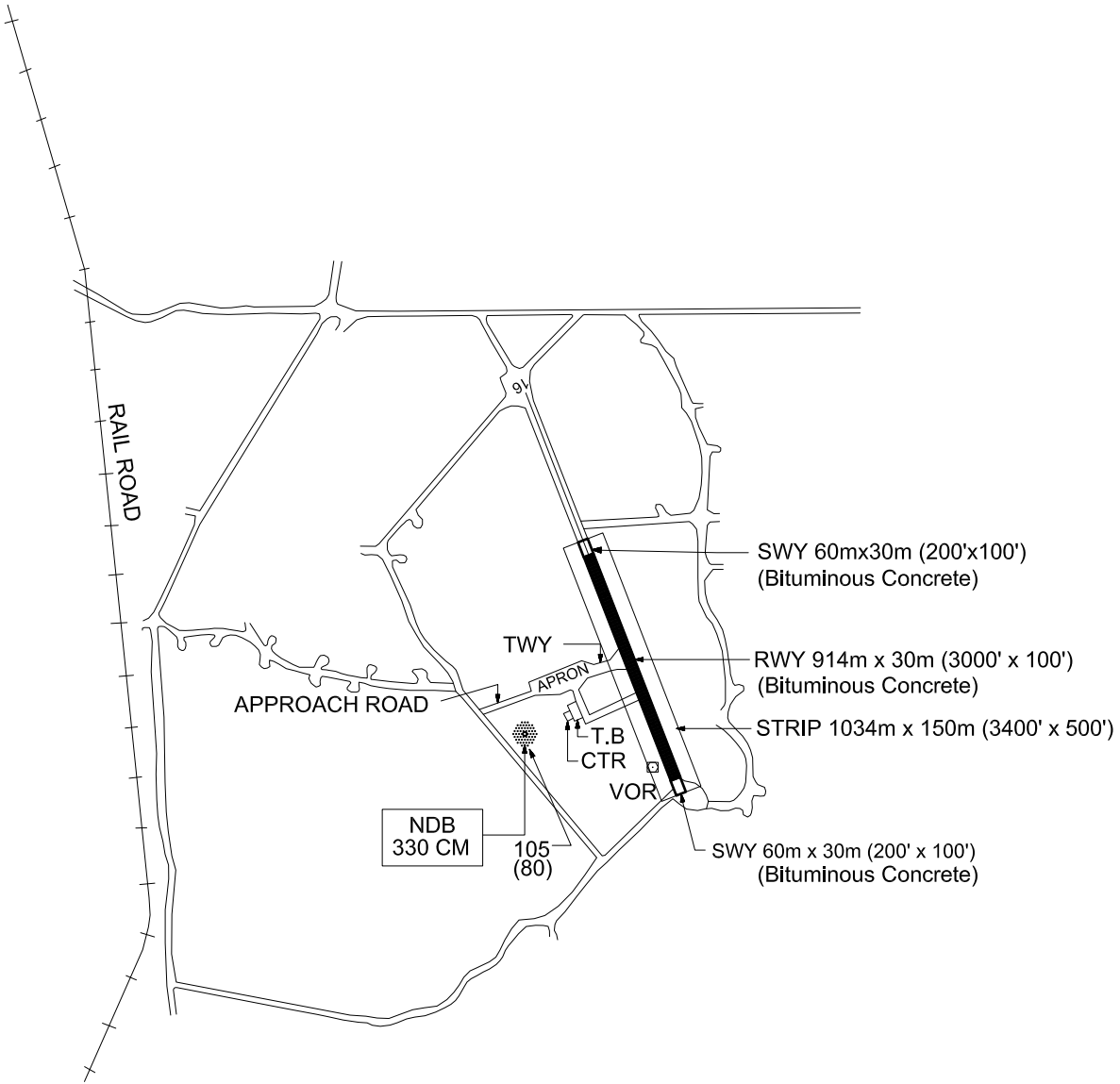
ICAO CHARTS		
NR	TYPE OF CHARTS	PAGE NR
1	AERODROME	VGCM AD 2-5

**ELEV 25FEET**

BEARINGS ARE MAGNETIC

HEIGHTS RELATED  
 TO AD ELEVATION

ELEVATIONS AND  
 HEIGHTS IN FEET



ELEVATION 105  
 HEIGHT (80)