

AD 2 AERODROMES

VGSY AD 2.1 AERODROME LOCATION INDICATOR AND NAME

VGSY – OSMANI INTERNATIONAL AIRPORT, SYLHET

VGSY AD 2.2 AERODROME GEOGRAPHICAL AND ADMINISTRATION DATA

1	ARP coordinates and site at AD	245740.83N 0915217.89E in the RWY
2	Distance and direction from city	05 NM N/NE of Town
3	AD elevation/reference temperature	50 FT/35.4 ⁰ C
4	MAG VAR	1 ⁰ W
5	AD administration, address, telephone, fax, AFS	Civil Aviation Authority of Bangladesh Postal address: Airport Manager, Osmani International Airport, Sylhet, Postal code 3102, Bangladesh Telephone :APM – 0821-714243 Control TWR – 0821-718459, VGSYZTZX
6	Types of traffic permitted	IFR/VFR
7	Remarks	Nil

VGSY AD 2.3 OPERATIONAL HOURS

SL Nr.	Services	Hours
1	Aerodrome Administration	0900 L T to 1700 L T, FRI & SAT closed
2	Custom and Immigration	HO
3	Health and Sanitation	HO
4	AIS briefing office	NIL
5	ATS reporting office (ARO)	HO
6	MET briefing office	HO
7	Air traffic service	HO
8	Fuelling	HO
9	Handling	HO
10	Security	HO
11	DE-icing	NIL
12	Remarks	NIL

VGSY AD 2.4 HANDLING SERVICES AND FACILITIES

Manual Handling

VGSY AD 2.5 PASSENGER FACILITIES

1	Hotels	AVBL within 2 Km FM airport
2	Restaurant accommodation	Limited at the airport
3	Transportation available	Taxies, Microbus, Car, Auto rickshaws
4	Medical facilities	Only first Aids AVBL.
5	Banks	AVBL
6	Tourist office	AVBL within 2 KM FM airport
7	Remarks	NIL
9	Post Office	NIL

VGSY AD 2.6 RESCUE AND FIRE FIGHTING SERVICES

1	AD Category for fighting	CAT : 7 AVBL : 7
2	Rescue Equipment	Limited
3	Disabled Aircraft Removal	NIL
4	Remarks	NIL

VGSY AD 2.7 SEASONAL AVAILABILITY CLEARING

2.7.1 The airport is available for all seasons. Side stripes become unusable during monsoon. There is no requirement for clearing.

VGSY AD 2.8 APRONS, TAXIWAYS AND CHECK LOCATIONS DATA

1	Apron surface and strength	Surface : Bituminous Concrete Strength: PCN 40/F/C/Y/T(old apron), 70/R/C/X/T(new apron)
2	Taxiway width, surface and strength	Width : 75 FT Surface : Bituminous Concrete Strength: PCN 40/F/C/Y/T (Taxiway-A), 70/F/C/X/T(Taxiway-B)
3	ACL location and elevation	Not designated
4	Remarks	Nil

VGSY AD 2.9 SURFACE MOVEMENT GUIDANCE, CONTROL SYSTEM AND MARKINGS

1	Stand identification/taxiway guidelines/ visual docking/parking guidance	Taxiing guidance signs at intersection with TWY and RWY. Guidance at apron: Nose-in guidance at aircraft stands. - Due to parking and maneuvering problem, all ACFT with wing-span more than 80ft operating to/fm Osmani International Airport are required to have tow bar for pushback.
2	RWY and TWY markings and LGT	RWY marking aids: THR, Centre line, RWY designator all runways, Touchdown zone marking. TWY marking aids: TWY centerline, RWY Holding Position
3	Stop bars	NIL
4	Remarks	NIL

VGSY AD 2.10 AERODROME OBSTACLES

SL Nr	Name of the significant obstacles/obstructions	Co-ordinates of the Obstacle	True Bearing FM REF point	Dist FM REF Point (m)	Elevation AMSL (FT)
1	DVOR	245747.70N 0915142.30E	283.20	1019	90 Ft
2	Control Tower	245731.68N 0915215.00E	197.39	278	100 Ft
3	Light Mast-01	245727.18N 0915216.74E	184.64	407	150 Ft
4	Light Mast-02	245726.16N 0915219.02E	175.77	426	150 Ft
5	Light Mast-05	245733.06N 0915209.60E	227.07	315	170 Ft
6	Grand Sylhet (building)	245717.70N 0915141.28E	236.15	1241	195 Ft.
7	Mobile Antenna Tower	245707.92N 0915151.42E	216.88	1241	200 Ft
8	TV Mast	Coordinate N/A	180	17594	445 Ft
9	Chimney	245815.84N 0915136.48E	313.44	1593	170 Ft
10	Jalalabad GAS Transmission building	245302.22N 0915249.08E	174	8619	200 Ft
11	Kailastila Gas Field	245208.28N 0920128.02E	124	18521	236 Ft

VGSY AD 2.11 METEOROLOGICAL INFORMATION PROVIDED

1	Associated MET office	Osmani Int'l Airport Sylhet (VGSY)
2	Hours of service	HO
3	Office responsible for TAF preparation Periods of validity (hours)	Hazrat Shahjalal Int'l (VGHS) 6
4	Type of landing forecast Interval of issuance	--
5	Briefing/consultation provided	Provided at VGHS
6	Flight documentation Languages used	C, PL English
7	Charts and other information available for briefing or consultation	--
8	Supplementary equipment available for providing information	--
9	ATS units provided with information	TWR
10	Additional information	Tel: NIL

VGSY AD 2.12 RUNWAY PHYSICAL CHARACTERISTICS

Designator RWY NR	TRUE & MAG BRG	Dimensions of RWY (m)	Strength (PCN) and surface of RWY & SWY	THR Coordinates	THR elevation (FT)	Slope of RWY- SWY
1	2	3	4	5	6	7
11	114 ⁰ True	3125X45	PCN 70/F/C/X/T Bituminous Concrete	245809.2N 0915104.3E	50	0.16 %
29	294 ⁰ True	3125X45		245730.7N 0915244.2E	50	0.16 %

Designator RWY NR	SWY Dimensions (m)	CWY Dimensions(m)	Strip Dimensions (m)	RESA(m)	OFZ	Remarks
8	9	10	11	12	13	14
11	67 X 45	250 X 150	3312 X 300	90x90	within the clearway	NIL
29	Nil	250 X 150	3312 X 300	90x90	within the clearway	

VGSY AD 2.13 DECLARED DISTANCES

RWY	TORA (m)	TODA (m)	ASDA (m)	LDA (m)	REMARKS
1	2	3	4	5	6
11	3125	3400	3192	3125	NIL
29	3125	4030	3220	3028	Due displaced threshold

VGSY AD 2.14 APPROACH AND RUNWAY LIGHTING

RWY Designator	APCH	THR	VASIS PAPI	TDZ	RWY centre line	RWY edge	END & WBAR	STW LGT	Remarks
1	2	3	4	5	6	7	8	9	10
11	Precision approach lighting system (CAT-1)	Six Green LGT	3 ⁰ PAPI	NIL	NIL	60 m apart lights intensity	AVBL	NIL	
29	Simple approach lighting system	Six Green LGT	3 ⁰ PAPI	NIL	NIL	100%, 80 %, 60 %.	AVBL	NIL	

VGSY AD 2.15 OTHER LIGHTING, SECONDARY POWER SUPPLY

1	ABN/ IBN location, characteristics and hours of operation	Nil
2	LDI location and LGT Anemometer location and LGT	Nil Atop control TWR,LGT
3	TWY edge and center line lighting	Edge: AVBL Center line: Nil
4	Secondary power supply switch-over time	During main power supply failure, Automatic standby generator power supply available within 15 seconds.
5	Remarks	Apron lights avbl

VGSY AD 2.16 HELICOPTER LANDING AREA

As directed by ATC

VGSY AD 2.17 AIR TRAFFIC SERVICES AIRSPACE

1	Designation	Aerodrome Traffic Zone (ATZ)
	Lateral limits	ATZ is oval shaped area joining outer tangents of 5 NM (9KM) radius circles centered at the RWY centre and both ends of RWY .
2	Vertical limits	4000 ft (AMSL)
3	Airspace	D
4	Unit	Sylhet Tower
	Language	English
5	Transition altitude	4000 ft
6	Remarks	Nil

VGSY AD 2.18 AIR TRAFFIC SERVICES COMMUNICATIONS FACILITIES

Service designator	Call Sign	Frequency	Hours of operation	Remarks
1	2	3	4	5
Aerodrome Control Service	Sylhet TWR	122.9 MHz (main) 122.5 MHz (sdby)	HO	NIL

VGSY AD 2.19 RADIO NAVIGATION AND LANDING AIDS

Type of aid Variation	Ident	Frequency	Operation hours	Coordinates	Height (Elev) of Nav aids transmitting antenna (ft)	Remarks
D/VOR	SYT	116.4 MHz	HO	245747.70 N 0915143.23E	40 (90) ft	
DME	SYT	1198 MHz	HO	245747.70 N 0915143.23E	40 (90)ft	Collocated with DVOR
NDB	SY	372 KHz	HO	245719.74 N 0915220.64E	60 (110)ft	
ILS/LLZ-11	SYL	111.5 MHz	HO	245726.82 N 0915254.96E	15 (65)ft	
ILS/GP-11	-	332.9 MHz	HO	245802.16N 0915111.82 E	50 (100) ft	
ILS/DME-11	-	1013 MHz	HO	245801.86N 0915112.18E	15 (65) ft	Collocated with GP

VGSY AD 2.20 LOCAL TRAFFIC REGULATIONS

Prior approval to be obtained from ATC.

VGSY AD 2.21 NOISE ABATEMENT PROCEDURES

NIL

VGSY AD 2.22 FLIGHT PROCEDURES

INTENTIONALLY BLANK

VGSY AD 2.23 ADDITIONAL INFORMATION

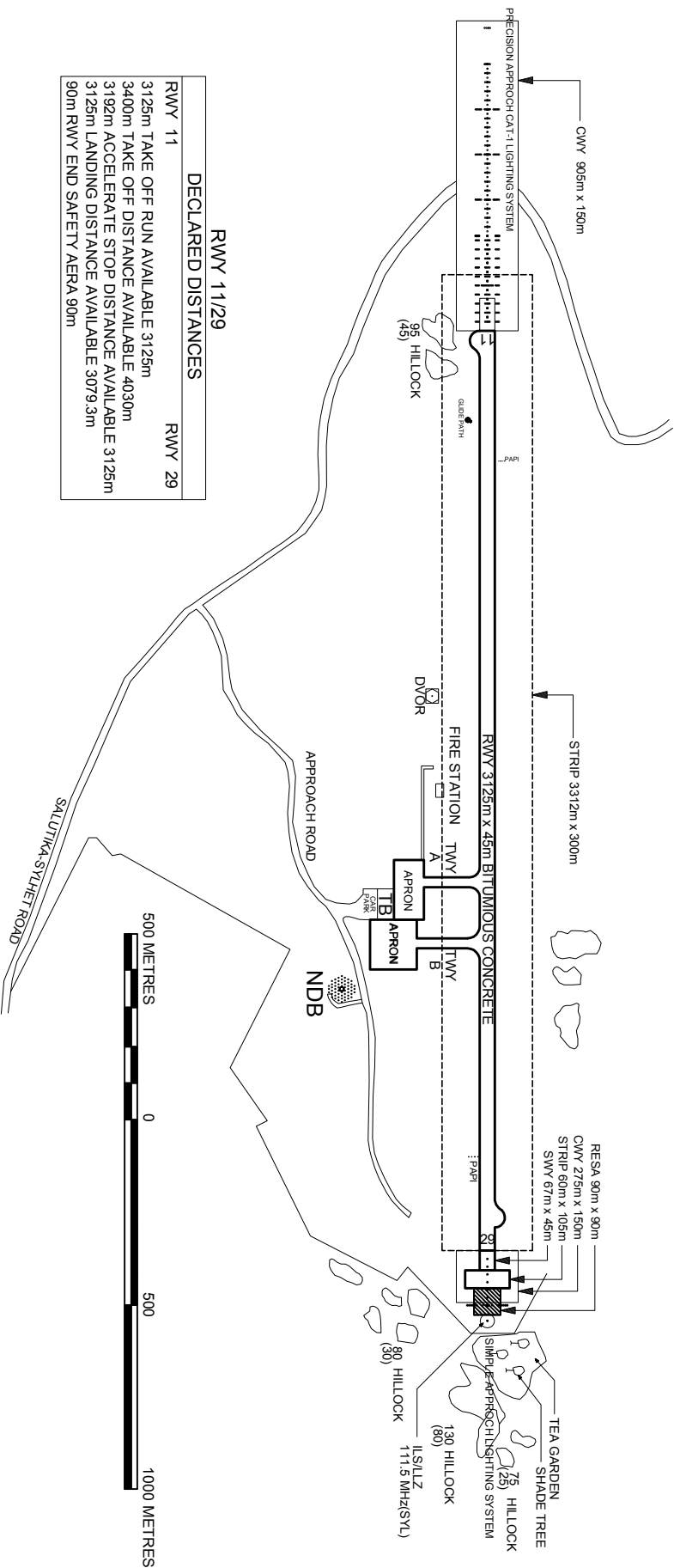
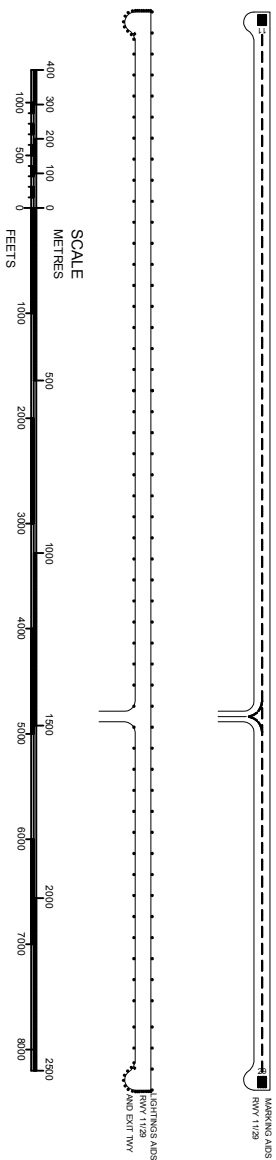
NIL

VGSY AD 2.24 CHARTS RELATED TO OSMANI INT'L AIRPORT, SYLHET

ICAO CHARTS		
	CHART TYPE	PAGE NR. (VGSY)
1	AERODROME CHART	AD 2-9
2	PARKING CHART	AD 2-10
3	INSTRUMENT APPROACH CHART	AD 2-11 to AD 2-21

INTENTIONALLY LEFT BLANK

MAGNETIC VARIATION 1° W

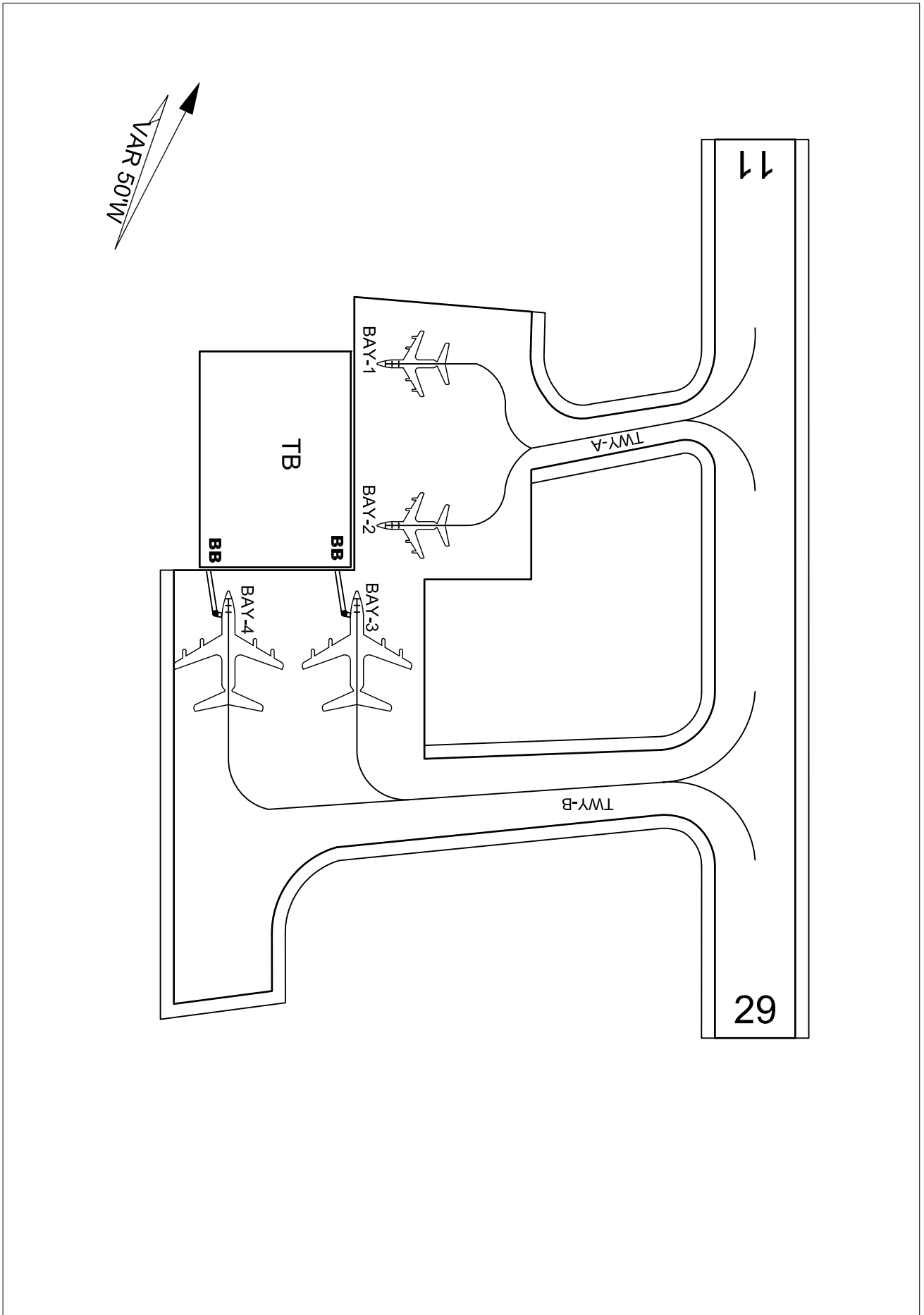


RWY 11/29	
DECLARED DISTANCES	
RWY 11	RWY 29
3125m TAKE OFF RUN AVAILABLE 3125m	
3400m TAKE OFF DISTANCE AVAILABLE 4030m	
3192m ACCELERATE STOP DISTANCE AVAILABLE 3125m	
3125m LANDING DISTANCE AVAILABLE 3079.3m	
90m RWY END SAFETY AREA 90m	



PARKING AND DOCKING CHART

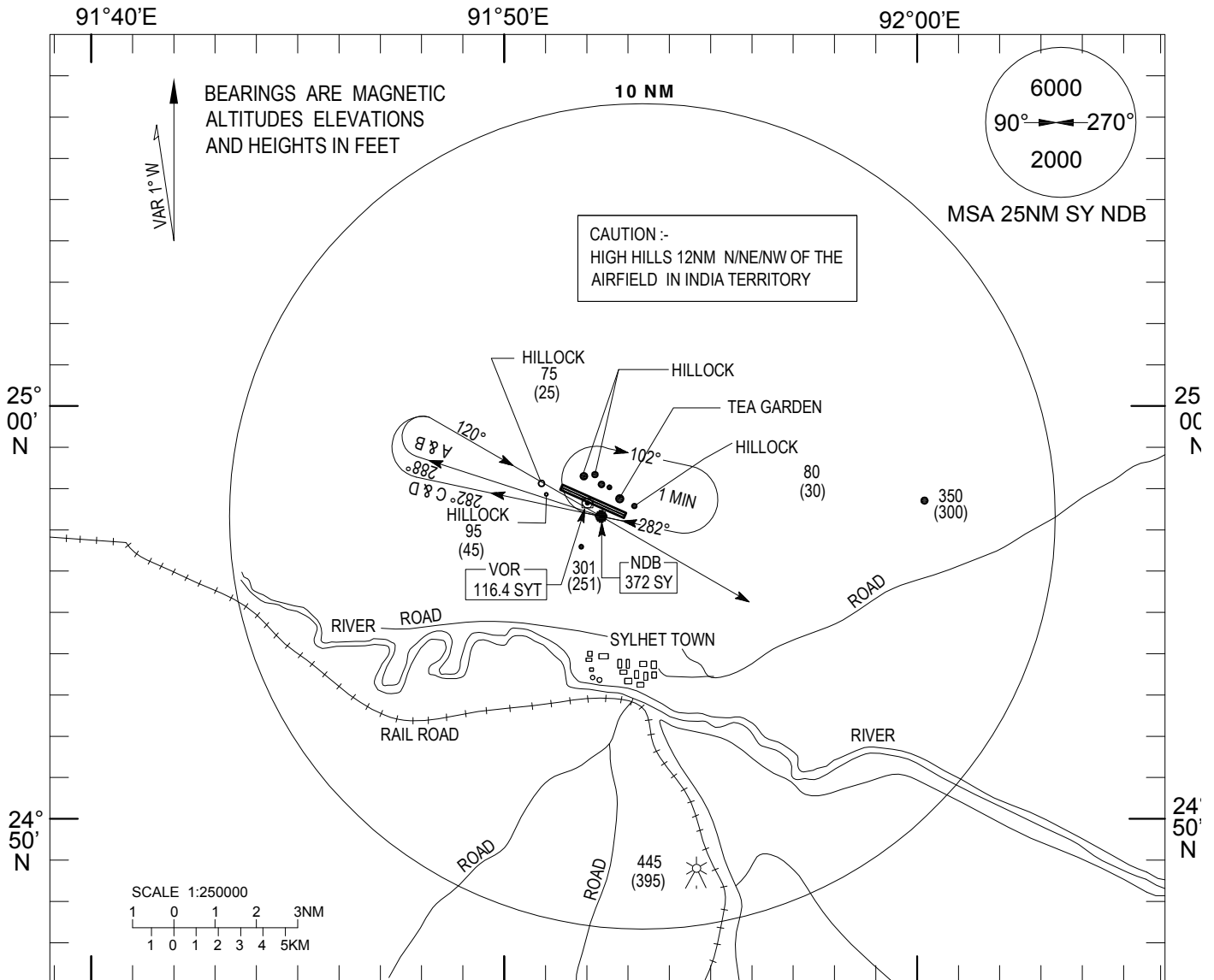
OSMANI INTERNATIONAL AIRPORT, SYLHET



INSTRUMENT APPROACH
ELEV 50FT
HEIGHTS RELATED TO AD ELEV

TWR 122.9(PRI)
122.5(Stand by)

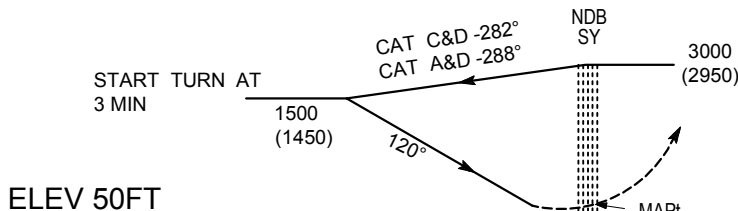
SYLHET, BANGLADESH
OSMANI INTERNATIONAL
NDB RWY 11



91°40'E 91°50'E 92°00'E

TRANSITION LEVEL FL 060
TRANSITION ALTITUDE 4000FT

MISSED APPROACH
CLIMB TO 2000FT / 610m ON
TRACK 120° CONTACT TWR
FOR FURTHER INSTRUCTION



ELEV 50FT

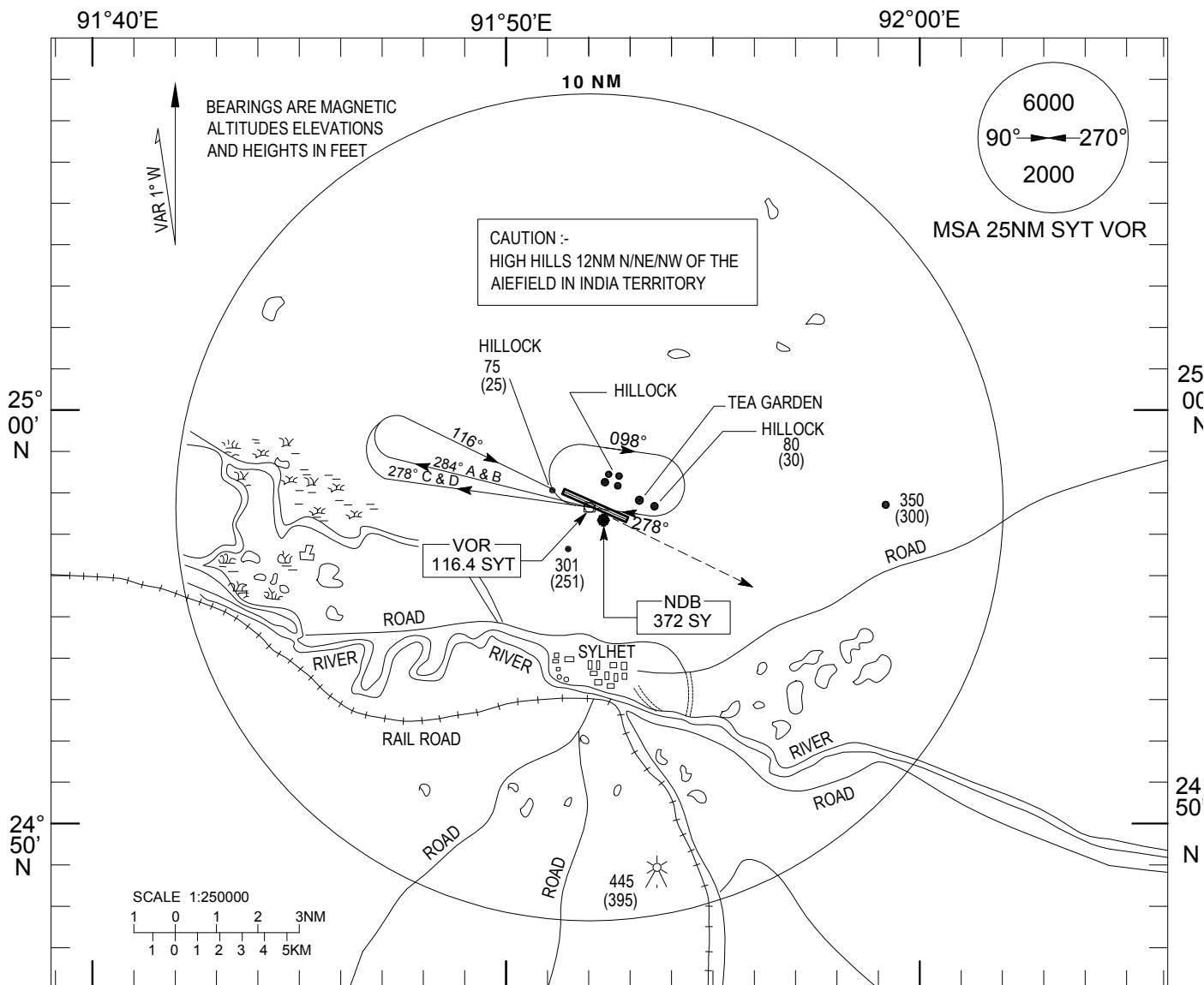
MET MINIMA VIS 2800 M	5 4 3 2 1 0 1 2 3 4 5 NM				
--------------------------	--------------------------	--	--	--	--

CATEGORY OF ACFT		A	B	C	D
OCA		450	450	500	500
SPEED	KNOTS	90	120	150	180

INSTRUMENT ELEV 50FT
APPROACH HEIGHTS RELATED
CHART- ICAO TO AD ELEV

TWR 122.9(PRI)
122.5(Stand by)

SYLHET, BANGLADESH
OSMANI INTERNATIONAL
VOR RWY 11



TRANSITION LEVEL FL 060
TRANSITION ALTITUDE 4000FT

MISSED APPROACH

CLIMB TO 2000FT / 610m ON
TRACK 116° CONTACT ATC
FOR FURTHER INSTRUCTION

ELEV 50FT

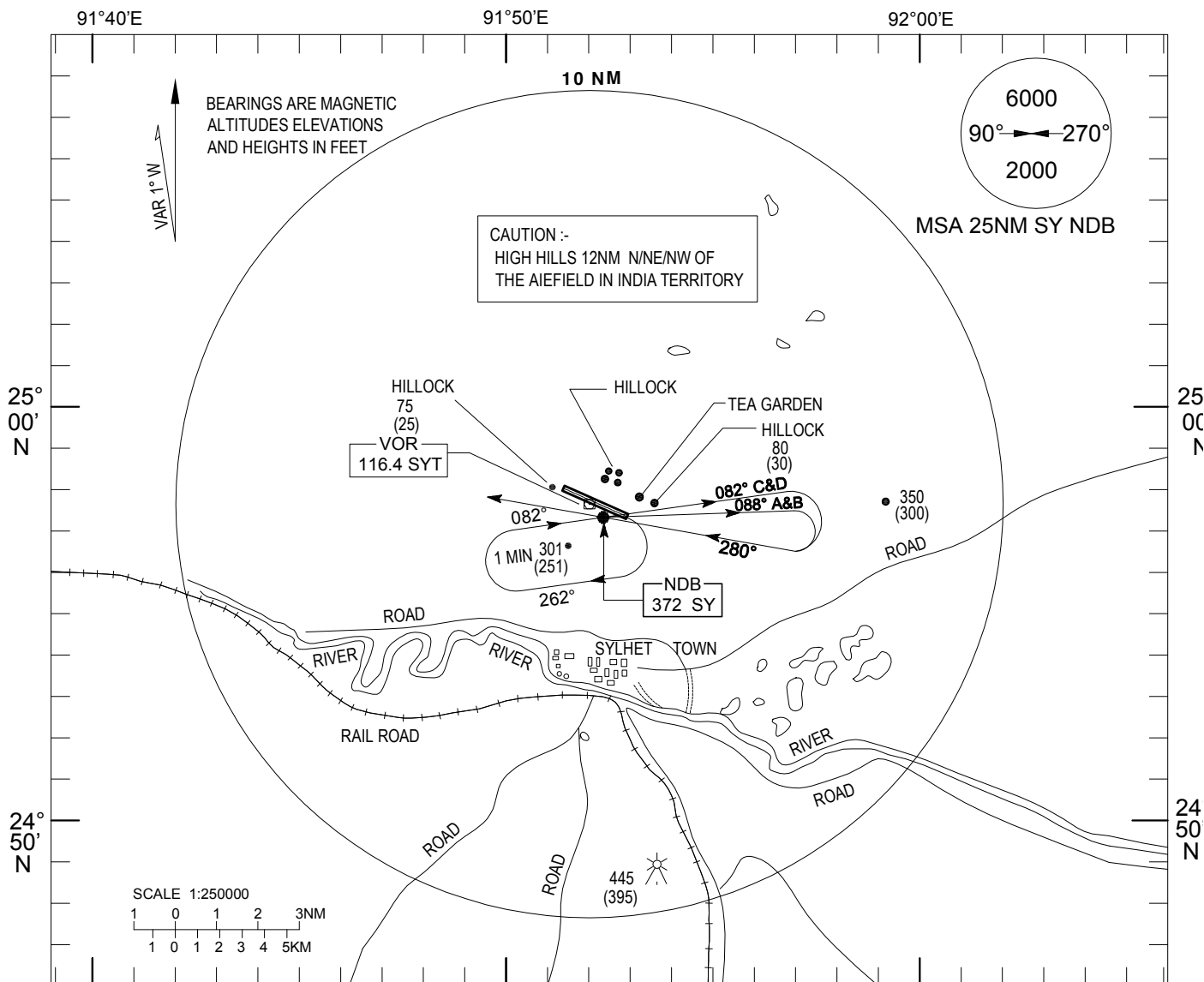
MET MINIMA
VIS 2800 M

CATEGORY OF ACFT		A	B	C	D
OCA		450	450	500	500
SPEED	KNOTS	90	120	150	180

INSTRUMENT APPROACH
ELEV 50FT
HEIGHTS RELATED TO AD ELEV

TWR 122.9(PRI)
122.5(Stand by)

SYLHET, BANGLADESH
OSMANI INTERNATIONAL
NDB RWY 29

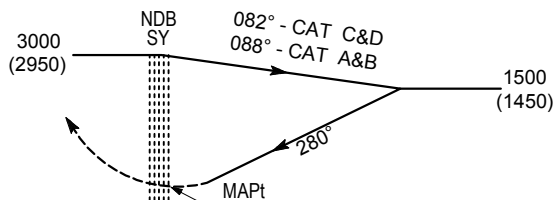


91°40'E 91°50'E 92°00'E

TRANSITION LEVEL FL 060
TRANSITION ALTITUDE 4000FT

MISSED APPROACH

CLIMB TO 2000FT / 610m ON TRACK 280° AND CONTACT ATC FOR FURTHER INSTRUCTION



START TURN AT
CAT A&B : 3 MIN
CAT C&D : 2 MIN

ELEV 50FT

MET MINIMA
VIS 2800 m

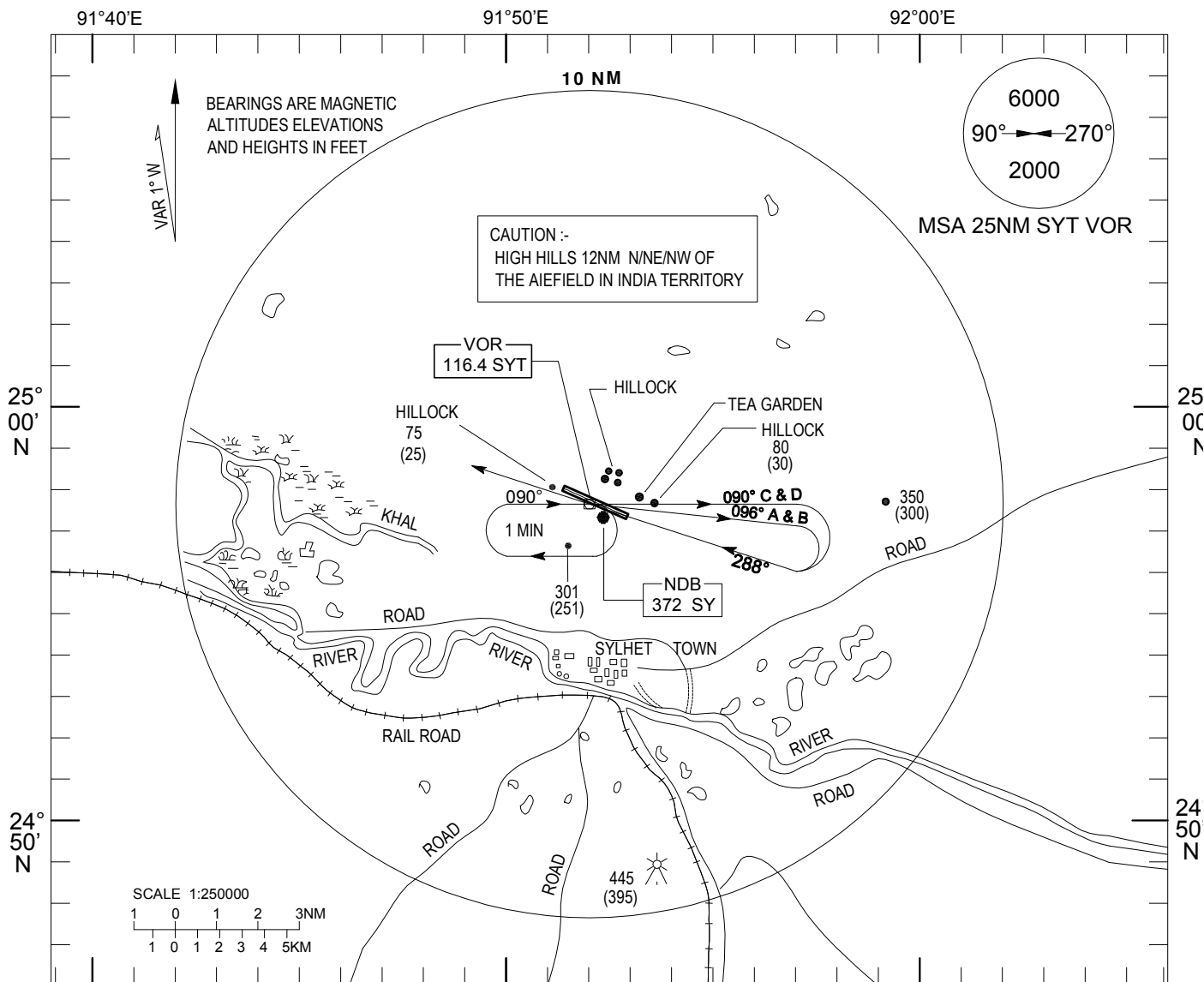
5 4 3 2 1 0 1 2 3 4 5 NM

CATEGORY OF ACFT		A	B	C	D
OCA		450	450	500	500
SPEED	KNOTS	90	120	150	180

INSTRUMENT APPROACH
ELEV 50FT
HEIGHTS RELATED
TO AD ELEV

TWR 122.9(PRI)
122.5(Stand by)

SYLHET, BANGLADESH
OSMANI INTERNATIONAL
VOR RWY 29

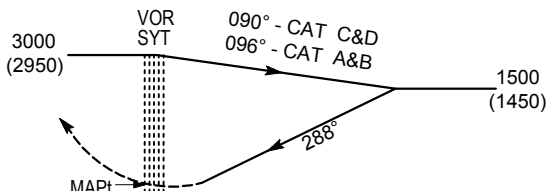


91°40'E 91°50'E 92°00'E

TRANSITION LEVEL FL 060
TRANSITION ALTITUDE 4000FT

MISSED APPROACH

CLIMB TO 2000FT / 610m ON
TRACK 288° AND CONTACT ATC
FOR FURTHER INSTRUCTION



START TURN AT
CAT A&B : 3 MIN
CAT C&D : 2 MIN

ELEV 50FT

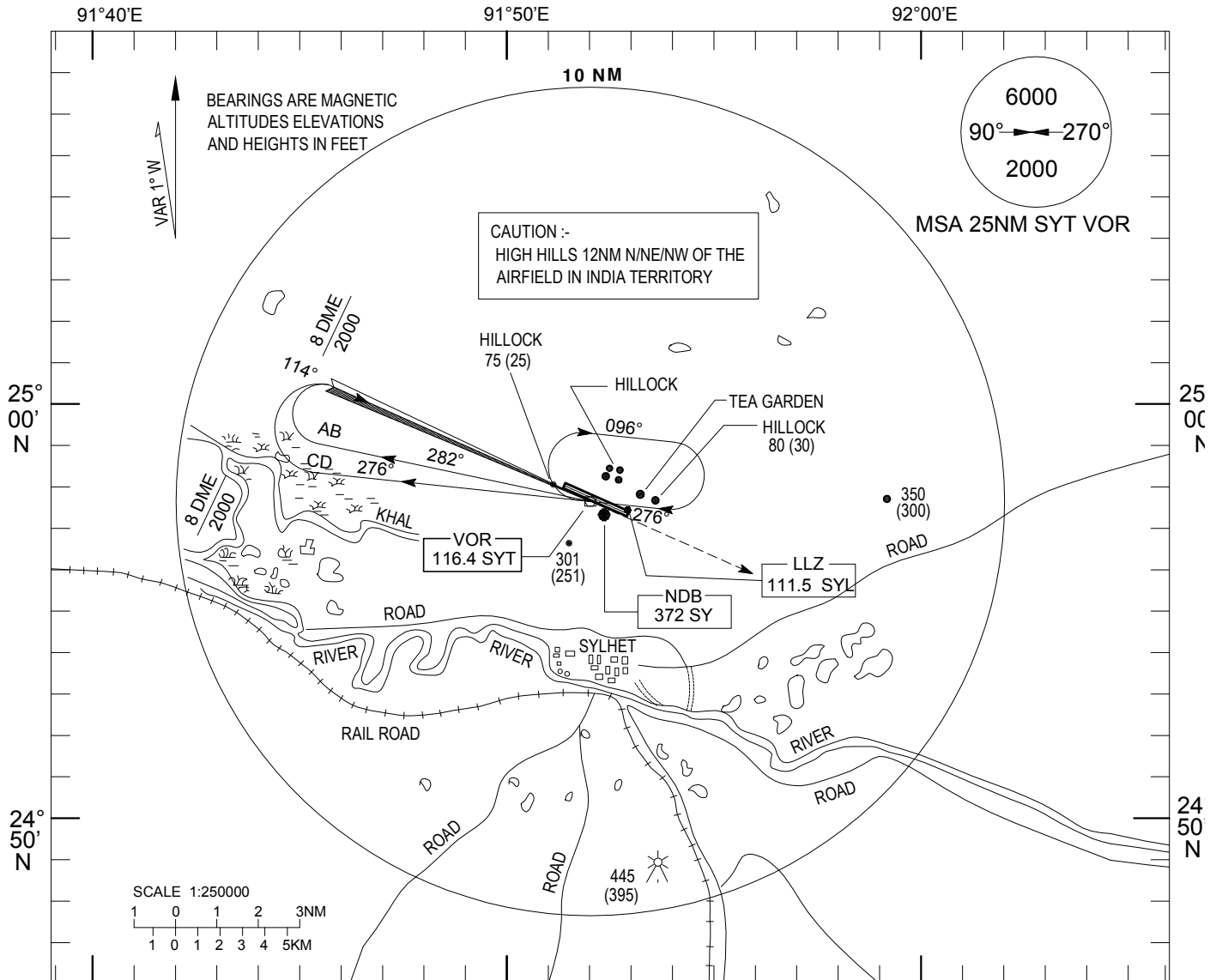
MET MINIMA
VIS 2800 m

CATEGORY OF ACFT		A	B	C	D
OCA		450	450	500	500
SPEED	KNOTS	90	120	150	180

INSTRUMENT APPROACH CHART- ICAO
ELEV 50FT
HEIHGTS RELATED TO AD ELEV

TWR 122.9(PRI)
122.5(Stand by)

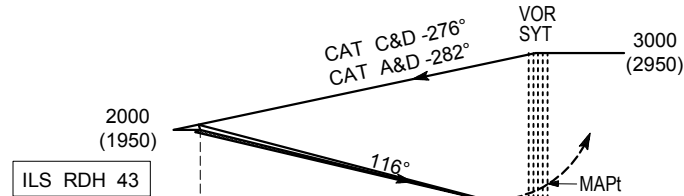
SYLHET, BANGLADESH
OSMANI INTERNATIONAL
VOR/ILS/DME RWY 11



91°40'E 91°50'E 92°00'E
TRANSITION LEVEL FL 060
TRANSITION ALTITUDE 4000FT

MISSED APPROACH

CLIMB TO 2000FT / 610m ON TRACK 114° CONTACT ATC FOR FURTHER INSTRUCTION



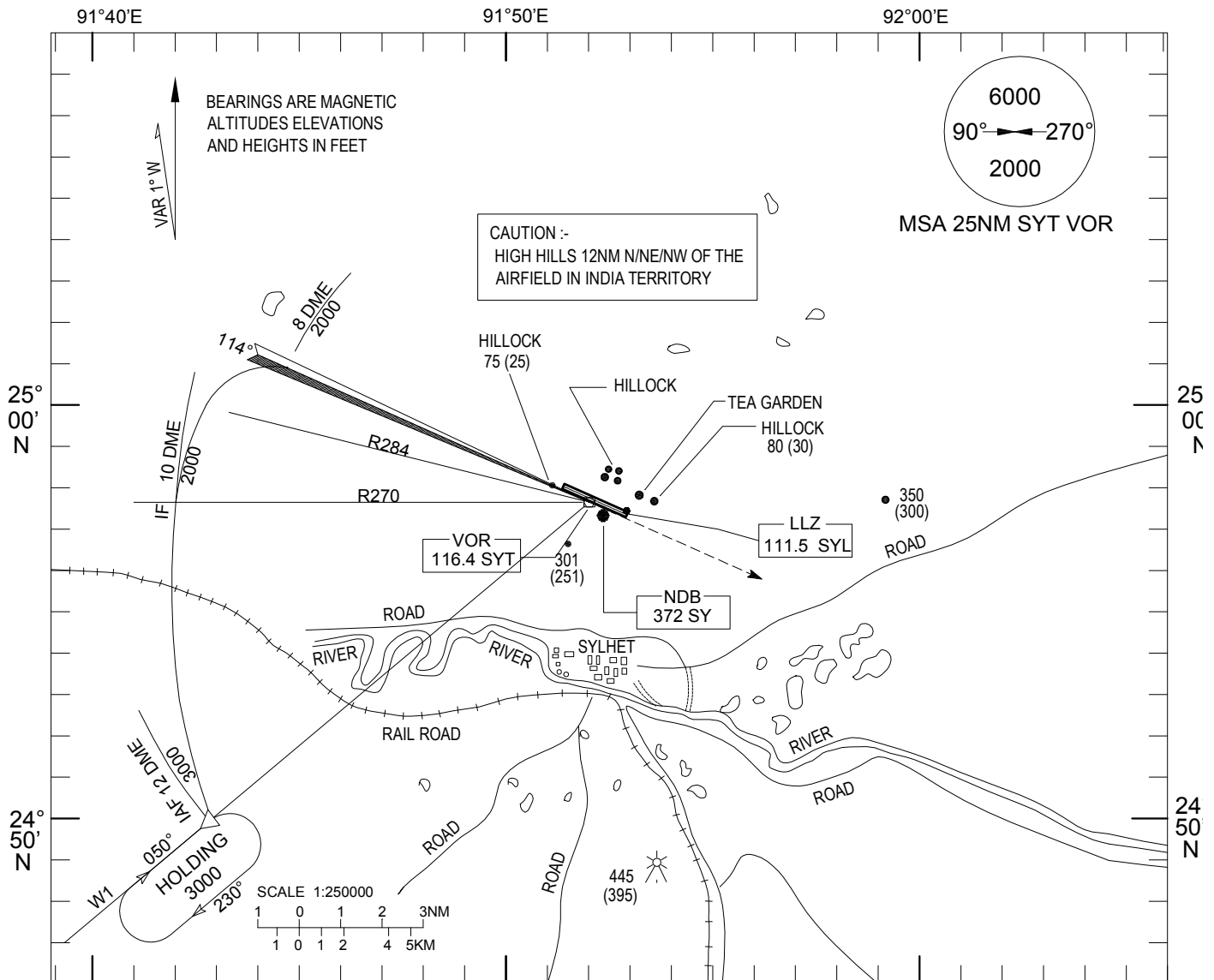
MET MINIMA VIS 2800 M

CATEGORY OF ACFT		A	B	C	D	CAT					
OCA	FULL	230	240	250	260	SPEED	KNOTS	90	120	150	260
	GP OUT	350	350	350	350	RATE OF DESCENT/GS	FT/MIN	480	635	795	956
DISTANCE	6 DME 5 DME	4DME	3DME	2 DME	1 DME	FAF TO THR11	MIN:S	3:54	2:55	2:20	1:57
ALTITUDE	2000 1685	1366	1048	730	411	MET MINIMA (m)	FULL	VIS: 800m, RVR: 800m			
(HEIGHT)	(1950) (1635)	(1316)	(998)	(680)	(361)		ALS OUT	VIS: 1400m			
							GP OUT	2000m(CAT A,B) & 2800m(CAT C,D)			

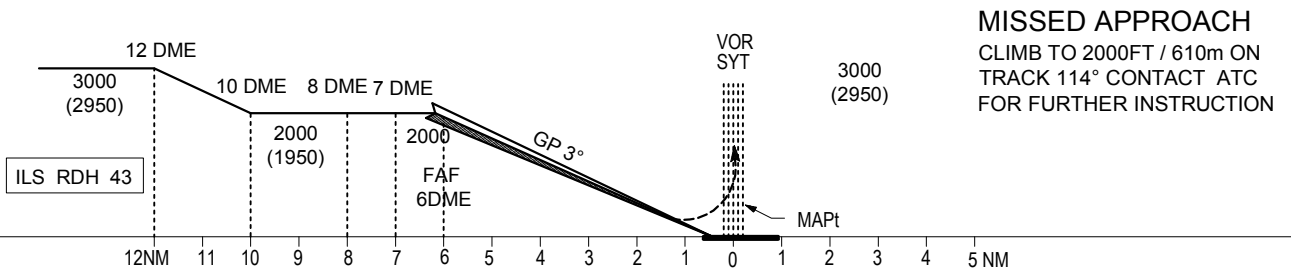
INSTRUMENT ELEV 50FT
APPROACH HEIGHTS RELATED
CHART- ICAO TO AD ELEV

TWR 122.9(PRI)
122.5(Stand by)

SYLHET, BANGLADESH
OSMANI INTERNATIONAL
VOR/ILS/DME-ARC RWY 11



TRANSITION LEVEL FL 060
TRANSITION ALTITUDE 4000FT



CATEGORY OF ACFT		A	B	C	D	CAT	A	B	C	D		
OCA	FULL	230	240	250	260	SPEED	90	120	150	260		
	GP OUT	350	350	350	350	RATE OF DESCENT/GS	480	635	795	956		
DISTANCE	6 DME	5 DME	4DME	3DME	2 DME	1 DME	FAF TO THR11	MIN:S	3:54	2:55	2:20	1:57
ALTITUDE	2000	1685	1366	1048	730	411	MET MINIMA (m)	FULL	VIS: 800m, RVR: 800m			
(HEIGHT)	(1950)	(1635)	(1316)	(998)	(680)	(361)		ALS OUT	VIS: 1400m			
								GP OUT	2000m(CAT A,B) & 2800m(CAT C,D)			