

RGQRNGJUTGRWDNKE "QH'DCPI NCF GUJ "
 CGTQP CWWKECN"R HQTO CVKQP "UGTXKEGU"
 EKKK"CXKCVKQP "CWWJ QTKV["QH'DCPI NCF GUJ "
 J GCF S WCTVGTU."MWTOKVQNC."FJ CMC/344; ."DCPI NCF GUJ "
 "

| | |
|------------------------------|-------------|
| VGN<- : : /24/ : ; 23626" | |
| " | CR"COFV" |
| HCZ<- : : /24/ : ; 23633" | " |
| " | 2344" |
| CHU<XI JS [Q[Z" | " |
| " | 46"OCT"4244 |
| Go ckn"cfckj s B eccd0 qx0lf | |

Rwdnecvqp"F cvg" <44"HGD"4244"

Ghgevkg"F cvg" <46"OCT"4244"

30 UK P KHECPV"R HQTO CVKQP "CPF "EJ CPI GU<

*c+ Ur gmkpi "qh'uqo g"Nqecvqp"Ucvkpu"j cu'dggp"eqttgevgf"

*d+ P gy "XI F "65"cpf "XI T"66"ctg"lpenf gf "lp"GP T"Ugevkqp"7"*lp"ej ctv'cnuq+0'

*e+ Rci g'pwo dgt"qh'Ej ctv'lp"GP T"Ugevkqp"7"j cu'dggp"ej cpi gf 0'

*f+ F gvcku"qh'D7; 6"j cxg"dggp"lpugtvgf "lp"GP T"Ugevkqp"50'

*g+ Eqpcev"Cff tguugu"qh'Gzgewkxg"F kgevt."J c| tcv'Uj cj lcrn'l'pugtvcvkpcn'Cltr qt'v'cpf "
F kgevt"*CVO +'ctg'tgxkugf 0'

*h+ TY [" VJ T" Eqqtflpcvgu" qh' XI ED" ctg" eqttgevgf 0' Ceeqtf lpi n{." Twpy c{ " F ko gpukqpu."
VQTC."VQFC."CUF C."NFC"qh'XI ED"j cxg"dggp'tgxkugf 0'

*i+ Twpy c{ "F ko gpukqpu"qh'XI LT"cpf "VQTC."VQFC."CUF C."NFC"j cxg"dggp'tgxkugf 0'

*j+ TY ["VJ T"Eqqtflpcvgu"qh'XI VL'ctg"eqttgevgf 0'Ceeqtf lpi n{."VQTC."VQFC."CUF C."NFC"
qh'XI VL'lpnwf lpi "Wpku"qh'F ko gpukqpu'ctg"ej cpi gf "v"o gvgf "

*k+ O ckhpi "cfftguu"qh'F kgevt"*CVO +'j cu'dggp"eqttgevgf 0'

40 R UGTV"VJ G'CVVCEJ GF "TGRNCEGO GP V"RCI GU."Y J KEJ "CTG"OCTMGF "Y KVJ "
CUVGTKUMU"R "VJ G'EJ GEMNKUV"QHRCI GU/I GP "206/3"VQ"i GP "206/60"

50 P GY "QT"TGXKUGF "R HQTO CVKQP "K"R F KEVGF "GKVJ GT"D["J QTK QP VCN"
CTTQY "QT"C"XGTVKECN"NR G0"

60 TGEQTF "GP VT["QHCO GP F O GP V"QP "RCI G'I GP "204/30"

70 VJ KU"CO GP F O GP V"R EQTRQTCVGU"R HQTO CVKQP "EQP VCR GF "R "VJ G"
HQNNQY R I "Y J KEJ "CTG"J GTG"D["UWRGTUGF GF <"

70 CR"UWRR"2342"cpf "24420"

70 P QVCO u<E222944."E222: 44."E222; 44."E232243."E233543."C259243"

GEN 0.2 RECORDS OF AIP AMENDMENTS

| PTI gct" | Ghgevkxg"Fcvg" | F cvg"Kpugt vgf " | Kpugt vgf "d{ " | PTI gct" | Ghgevkxg"Fcvg" | F cvg"Kpugt vgf " | Kpugt vgf "d{ " |
|-----------|-----------------|-------------------|-----------------|----------|----------------|-------------------|-----------------|
| 234233" | 52"LWP ""4233" | 52"LWP ""4233" | " | " | " | " | " |
| P K" | 37"FG E"4233" | ///" | " | " | " | " | " |
| 234234" | 2: "OCT"4234" | 2: "OCT"4234" | " | " | " | " | " |
| 244234" | 3: "QEV"4234" | 3: "QEV"4234" | " | " | " | " | " |
| 234235" | 26"CRT"4235" | 26"CRT"4235" | " | " | " | " | " |
| 244235" | 39"QEV"4235" | 39"QEV"4235" | " | " | " | " | " |
| 234236" | 25"CRT"4236" | 25"CRT"4236" | " | " | " | " | " |
| 244236" | 38"QEV"4236" | 38"QEV"4236" | " | " | " | " | " |
| 234237" | 24"CRT"4237" | 24"CRT"4237" | " | " | " | " | " |
| 244237" | 34"P QX"4237" | 34"P QX"4237" | " | " | " | " | " |
| 234238" | 45LWP "4238" | 45LWP "4238" | " | " | " | " | " |
| 244238" | 2: "FGE"4238" | 2: "FGE"4238" | " | " | " | " | " |
| 234239" | 29"FG E"4239" | 29"FG E"4239" | " | " | " | " | " |
| 23423: " | 46"OC ["423: " | 46"OC ["423: " | " | " | " | " | " |
| 23423; " | 4: "OCT"423; " | 4: "OCT"423; " | " | " | " | " | " |
| 24423; " | 32"QEV"423; " | 32"QEV"423; " | " | " | " | " | " |
| 234242" | 52"ICP "4242" | 52"ICP "4242" | " | " | " | " | " |
| 244242" | 25"FG E"4242" | 25"FG E"4242" | " | " | " | " | " |
| 234243" | 44"CRT"4243" | 44"CRT"4243" | " | " | " | " | " |
| → 234244" | 46"OCT"4244" | " | " | " | " | " | " |
| " | " | " | " | " | " | " | " |
| " | " | " | " | " | " | " | " |
| " | " | " | " | " | " | " | " |
| " | " | " | " | " | " | " | " |
| " | " | " | " | " | " | " | " |
| " | " | " | " | " | " | " | " |
| " | " | " | " | " | " | " | " |

INTENTIONALLY LEFT BLANK

GEN 0.3 RECORD OF CURRENT AIP SUPPLEMENTS

| PTI gct" | Uwdlgev' | CR" Ugevkp*u" chgevgf " | Rgtkqf "qh'xcrkf k{ " *Hqo IVq+ " | Ecpegrvkvq' tgeqtf " |
|----------|---|-------------------------------|--------------------------------------|----------------------|
| 2343" | Y I U: 6'Eqqt f lpcvgu'qh' qduvcergu'qh'f khtg gpv' Ckr qt w'lp" Dcpi rnf guj " | CF " | Rgto cpgpv' | " |
| 2642" | TPR'Cr r tqcej "Rtqegf wt g' hqt" TY [38"cpf "TY [56"cv'lcuj qt g" Ckr qt v'lcuj qt g0' | CF " | Rgto cpgpv' | " |
| 2542" | TPR'Cr r tqcej "Rtqegf wt g' hqt" TY [56"cpf "TY [38"cv'Uckf r wt" Ckr qt v'Uckf r wt0' | CF " | Rgto cpgpv' | " |
| 2; B: " | TPR'Cr r tqcej "Rtqegf wt g' hqt" TY [33cpf "TY [4; "cv'Quo cpk' kvgtpcvkqpciCkr qt v'U{ij gv" Dcpi rnf guj 0' | CF " | Rgto cpgpv' | " |
| 2; B: " | TPR'Cr r tqcej "Rtqegf wt g' hqt" TY [45" cpf "TY [27" cv' Uj cj " Co cpcv' kvgtpcvkqpciCkr qt v." Ej cwqi tco ."Dcpi rnf guj 0' | CF " | Rgto cpgpv' | " |
| 29B: " | TPR'Cr r tqcej "Rtqegf wt g' hqt" TY [54"cvJ c tev' Uj cj lcn'kvgtpcvkqpci' Ckr qt v'Fj cnc ."Dcpi rnf guj 0' | CF " | Rgto cpgpv' | " |
| " | " | " | " | " |
| " | " | " | " | " |
| " | " | " | " | " |
| " | " | " | " | " |
| " | " | " | " | " |
| " | " | " | " | " |
| " | " | " | " | " |
| " | " | " | " | " |
| " | " | " | " | " |
| " | " | " | " | " |
| " | " | " | " | " |
| " | " | " | " | " |
| " | " | " | " | " |
| " | " | " | " | " |
| " | " | " | " | " |
| " | " | " | " | " |
| " | " | " | " | " |

I GP "206/4" " " " " " " " " " " " "CR"

46"O CT"4244" " " " " " " " " " " " "DCPI NCF GU "

| RCI G" | F CVG" | RCI G" | F CVG" | RCI G" | F CVG" |
|----------|---------------|-------------------|-----------------|----------------|-----------------|
| 30/3" | 45"LWP "4238" | 306/7" | 25"LWP "4232" | 704/3" | 32"QEV"423; " |
| 30/4" | 45"LWP "4238" | 306/8" | 25"LWP "4232" | 704/4" | 32"QEV"423; " |
| 30/5" | 45"LWP "4238" | 306/9" | 25"LWP "4232" | 704/5 IEj ctv' | 4: "O CT"423; " |
| 30/6" | 45"LWP "4238" | 306/: " | 25"LWP "4232" | 705/3" | 25"LWP "4232" |
| 30/7" | 52"LWP "4233" | 306/; " | 25"LWP "4232" | 706/3" | 24"FG E"4243" |
| 30 /4" | 25"LWP "4232" | ENR 2 | | 707/3" | 25"LWP "4232" |
| 30 /5" | 25"LWP "4232" | 408/3" | 4: "O CT"423; " | 708/3" | 25"LWP "4232" |
| 30 /6" | 25"LWP "4232" | 408/4" | 4: "O CT"423; " | ENR 6" | |
| 30 /7" | 45"LWP "4238" | 404/3" | 25"LWP "4232" | 8/3 IEj ctv' | 25"FG E"4242" |
| 30 /8" | 452LWP "4238" | ENR 3 | | 8/5 IEj ctv' | 25"FG E"4242" |
| 30 /9" | 45"LWP "4238" | 508/3" | 32"QEV"423; " | , 8/9 IEj ctv' | , 46"O CT"4244" |
| 30 /: " | 45"LWP "4238" | 508/4" | 32"QEV"423; " | " | " |
| 30 /; " | 45"LWP "4238" | , 508/5" | , 46"O CT"4244" | " | " |
| 30 /32" | 45"LWP "4238" | , 508/6" | , 46"O CT"4244" | " | " |
| 30 /33" | 45"LWP "4238" | , 508/7" | , 46"O CT"4244" | " | " |
| 30 /34" | 45"LWP "4238" | , 508/8" | , 46"O CT"4244" | " | " |
| 30 /35" | 25"LWP "4232" | 508/9" | 32"QEV"423; " | " | " |
| 30 /36" | 25"LWP "4232" | 508/: " | 32"QEV"423; " | " | " |
| 30 /37" | 25"LWP "4232" | 508/; " | 25"FG E"4242" | " | " |
| 30 /38" | 25"LWP "4232" | 508/32" | 25"FG E"4242" | " | " |
| 30 /39" | 25"LWP "4232" | 508/33" | 52"ICP "4242" | " | " |
| 30 /3: " | 25"LWP "4232" | 508/34" | 52"ICP "4242" | " | " |
| 30 /3; " | 25"LWP "4232" | 508/35" | 25"FG E"4242" | " | " |
| 30 /42" | 25"LWP "4232" | 508/36" | 25"FG E"4242" | " | " |
| 30 /43" | 25"LWP "4232" | 508/37" | 32"QEV"423; " | " | " |
| 30 /3" | 25"LWP "4232" | ENR 4 | | " | " |
| 30 /4" | 25"LWP "4232" | 608/3" | 32"QEV"423; " | " | " |
| 30 /5" | 25"LWP "4232" | 604/3" | 25"LWP "4232" | " | " |
| 30 /6" | 25"LWP "4232" | 605/3" | 32"QEV"423; " | " | " |
| 30 /7" | 25"LWP "4232" | 606/3" | 32"QEV"423; " | " | " |
| 30 /8" | 25"LWP "4232" | ENR 5 | | " | " |
| 30 /9" | 25"LWP "4232" | 708/3" | 25"FG E"4242" | " | " |
| 3082/3" | 32"QEV"423; " | 7080/4" | 25"FG E"4242" | " | " |
| 3082/4" | 32"QEV"423; " | 708/5" | 32"QEV"423; " | " | " |
| 3083/3" | 32"QEV"423; " | 708/6" | 32"QEV"423; " | " | " |
| 3084/3" | 45"LWP "4238" | 708/7" | 25"FG E"4242" | " | " |
| 3084/4" | 45"LWP "4238" | 708/8" | 25"FG E"4242" | " | " |
| 3084/5" | 25"LWP "4232" | 708/9" | 4: "O CT"423; " | " | " |
| 3084/6" | 25"LWP "4232" | 708/: " | 4: "O CT"423; " | " | " |
| 3085/3" | 25"LWP "4232" | 708/; " | 4: "O CT"423; " | " | " |
| 3086/3" | 25"LWP "4232" | 708/32" | 4: "O CT"423; " | " | " |
| 3086/4" | 25"LWP "4232" | , 708/33" | , 46"O CT"4244" | " | " |
| 308605" | 25"LWP "4232" | , 708/34" | , 46"O CT"4244" | " | " |
| 3086/6" | 25"LWP "4232" | , 708/35 IEj ctv' | , 46"O CT"4244" | " | " |

CR"CO F V"2344" " " " " " " " " " " " "EKK"CXK VQP "CWJ QTKI "

| RCI G" | F CVG" | RCI G" | F CVG" |
|-------------------------------|----------------|---------------------------|----------------|
| PART 3 AERODROMES (AD) | | XI J UCF "4/55 IEj ctv" | 4: "OCT"423; " |
| AD 0 | | XI J UCF "4/57 IEj ctv" | 45"LWP "4238" |
| CF "20803" | XI J UCF "4" | XI J UCF "4/59 IEj ctv" | 45"LWP "4238" |
| CF "20804" | XI J UCF "4" | XI J UCF "4/5; IEj ctv" | 45"LWP "4238" |
| CF "20805" | XI J UCF "4" | XI J UCF "4/63 IEj ctv" | 2: "FGE"4238" |
| CF "20806" | XI J UCF "4" | XI J UCF "4/65 IEj ctv" | 32"QEV"423; " |
| CF "20807" | XI J UCF "4" | XI J UCF "4/67 IEj ctv" | 32"QEV"423; " |
| CF "20808" | XI J UCF "4" | XI J UCF "4/69 IEj ctv" | 32"QEV"423; " |
| CF "20809" | XI J UCF "4" | XI J UCF "4/6; IEj ctv" | 32"QEV"423; " |
| AD 1 | | XI J UCF "4/72" | 32"QEV"423; " |
| 308/3" | 25"LWP "4232" | , XI GI "CF"4/3 | , 46'OCT"4244 |
| 308/4" | 25"LWP "4232" | , XI GI "CF"4/4 | , 46'OCT"4244 |
| 308/5" | 25"LWP "4232" | XI GI "CF"4/5" | 32"QEV"423; " |
| 308/6" | 25"LWP "4232" | XI GI "CF"4/6" | 32"QEV"423; " |
| 308/7" | 25"LWP "4232" | XI GI "CF"4/7" | 45"LWP "4238" |
| 304/3" | 25"LWP "4232" | XI GI "CF"4/8" | 45"LWP "4238" |
| 305/3" | 32"QEV"423; " | XI GI "CF"4/9" | 32"QEV"423; " |
| 305/5 IEj ctv" | 4: "OCT"423; " | XI GI "CF"4/: " | 32"QEV"423; " |
| *306/3 | *44"MAR"4242 | XI GI "CF"4/; 0" | 32"QEV"423; " |
| AD 2 | | XI GI "CF"4/; 0" | 32"QEV"423; " |
| , XI J UCF "4/3 | , 46'OCT"4244 | XI GI "CF"4/; 0" | 4: "OCT"423; " |
| , XI J UCF "4/4 | , 46'OCT"4244 | XI GI "CF"4/32" | 4: "OCT"423; " |
| XI J UCF "4/5" | 25"FGE"4242" | XI GI "CF"4/33 IEj ctv" | 32"QEV"423; " |
| XI J UCF "4/6" | 25"FGE"4242" | XI GI "CF"4/35 IEj ctv" | 32"QEV"423; " |
| XI J UCF "4/7" | 2: "FGE"4238" | , XI GI "CF"4/350 IEj ctv | , 46'OCT"4244 |
| XI J UCF "4/8" | 2: "FGE"4238" | XI GI "CF"4/37 P'Dicpm" | 32"QEV"423; " |
| XI J UCF "4/9" | 4: "OCT"423; " | XI GI "CF"4/39 IEj ctv" | 4: "OCT"423; " |
| XI J UCF "4/: " | 4: "OCT"423; " | XI GI "CF"4/3; IEj ctv" | 4: "OCT"423; " |
| XI J UCF "4/; " | 44"CRT"4243" | XI GI "CF"4/43 P'Dicpm" | 32"QEV"423; " |
| XI J UCF "4/32" | 44"CRT"4243" | XI GI "CF"4/45 IEj ctv" | 4: "OCT"423; " |
| XI J UCF "4/330" | 4: "OCT"423; " | XI GI "CF"4/47 IEj ctv" | 4: "OCT"423; " |
| XI J UCF "4/3304" | 4: "OCT"423; " | XI GI "CF"4/49 IEj ctv" | 32"QEV"423; " |
| , XI J UCF "4/3305 | , 46'OCT"4244 | XI GI "CF"4/4; IEj ctv" | 32"QEV"423; " |
| , XI J UCF "4/34 | , 46'OCT"4244 | XI UJ "CF"4/3" | 25"FGE"4242" |
| XI J UCF "4/35" | 45"LWP "4238" | XI UJ "CF"4/4" | 25"FGE"4242" |
| XI J UCF "4/37 IEj ctv" | 46"OC["423; " | XI UJ "CF"4/5" | 25"FGE"4242" |
| XI J UCF "4/38 IEj ctv" | 4: "OCT"423; " | XI UJ "CF"4/6" | 25"FGE"4242" |
| XI J UCF "4/39 IEj ctv" | 4: "OCT"423; " | XI UJ "CF"4/7" | 4: "OCT"423; " |
| XI J UCF "4/3; IEj ctv" | 45"LWP "4238" | XI UJ "CF"4/8" | 4: "OCT"423; " |
| XI J UCF "4/43 IEj ctv" | 4: "OCT"423; " | XI UJ "CF"4/9" | 44"CRT"4243" |
| XI J UCF "4/45 IEj ctv" | 45"LWP "4238" | XI UJ "CF"4/; IEj ctv" | 29"FGE"4239" |
| XI J UCF "4/47 IEj ctv" | 29"FGE"4239" | XI UJ "CF"4/32 IEj ctv" | 34"PQX"4237" |
| XI J UCF "4/49 IEj ctv" | 4: "OCT"423; " | XI UJ "CF"4/33 IEj ctv" | 4: "OCT"423; " |
| XI J UCF "4/4; IEj ctv" | 45"LWP "4238" | XI UJ "CF"4/35 IEj ctv" | 4: "OCT"423; " |
| XI J UCF "4/53 IEj ctv" | 4: "OCT"423; " | XI UJ "CF"4/37 IEj ctv" | 4: "OCT"423; " |

I GP "206/6" " " " " " " " " " " " "CR"

46"OCT"4244" " " " " " " " " " " " "DCPI NCF GU "

"

| RCI G" | FCVG" | RCI G" | FCVG" |
|-------------------------|----------------|-------------------------|----------------|
| XI U 'CF "4/39Ej ctv' | 4: "OCT"423; " | XI LT'CF "4/; E j ctv' | 32"QEV"423; " |
| XI U 'CF "4/3; E j ctv' | 32"QEV"423; " | XI LT'CF "4/33Ej ctv' | 32"QEV"423; " |
| XI U 'CF "4/43Ej ctv' | 32"QEV"423; " | XI LT'CF "4/35Ej ctv' | 32"QEV"423; " |
| XI DI 'CF "4/3" | 32"QEV"423; " | XI LT'CF "4/37Ej ctv' | 32"QEV"423; " |
| XI DI 'CF "4/4" | 32"QEV"423; " | XI LT'CF "4/39Ej ctv' | 32"QEV"423; " |
| XI DI 'CF "4/5" | 32"QEV"423; " | XI LT'CF "4/3; E j ctv' | 32"QEV"423; " |
| XI DI 'CF "4/6" | 32"QEV"423; " | XI TL'CF "4/3" | 32"QEV"423; " |
| XI DI 'CF "4/7" | 32"QEV"423; " | XI TL'CF "4/4" | 32"QEV"423; " |
| XI DI 'CF "4/8" | 32"QEV"423; " | XI TL'CF "4/5" | 32"QEV"423; " |
| XI DT'CF "4/3" | 32"QEV"423; " | XI TL'CF "4/6" | 32"QEV"423; " |
| XI DT'CF "4/4" | 32"QEV"423; " | XI TL'CF "4/7" | 32"QEV"423; " |
| XI DT'CF "4/5" | 24"FG"4243" | XI TL'CF "4/9Ej ctv' | 45"LWP "4238" |
| XI DT'CF "4/6" | 24"FG"4243" | XI TL'CF "4/; E j ctv' | 29"FG"4239" |
| XI DT'CF "4/7" | 32"QEV"423; " | XI TL'CF "4/33Ej ctv' | 2: "FG"4238" |
| XI DT'CF "4/9Ej ctv' | 32"QEV"423; " | XI TL'CF "4/35Ej ctv' | 2: "FG"4238" |
| XI DT'CF "4/; E j ctv' | 32"QEV"423; " | XI TL'CF "4/37Ej ctv' | 2: "FG"4238" |
| XI DT'CF "4/33Ej ctv' | 32"QEV"423; " | XI UF 'CF "4/3" | 32"QEV"423; " |
| , XI ED'CF "4/3" | , 46"OCT"4244" | XI UF 'CF "4/4" | 32"QEV"423; " |
| , XI ED'CF "4/4" | , 46"OCT"4244" | XI UF 'CF "4/5" | 32"QEV"423; " |
| , XI ED'CF "4/5" | , 46"OCT"4244" | XI UF 'CF "4/6" | 32"QEV"423; " |
| , XI ED'CF "4/6" | , 46"OCT"4244" | XI UF 'CF "4/7" | 32"QEV"423; " |
| XI ED'CF "4/7" | 4: "OCT"423; " | XI UF 'CF "4/9Ej ctv' | 4: "OCT"423; " |
| XI ED'CF "4/9Ej ctv' | 2: "FG"4238" | XI UF 'CF "4/; E j ctv' | 32"QEV"423; " |
| XI ED'CF "4/; E j ctv' | 4: "OCT"423; " | XI UF 'CF "4/33Ej ctv' | 32"QEV"423; " |
| XI ED'CF "4/33Ej ctv' | 4: "OCT"423; " | XI UF 'CF "4/35Ej ctv' | 52"ICP "4242" |
| XI ED'CF "4/35Ej ctv' | 4: "OCT"423; " | XI UF 'CF "4/37Ej ctv' | 52"ICP "4242" |
| XI EO 'CF "4/3" | 4: "OCT"423; " | , XI U 'CF "4/3" | , 46"OCT"4244" |
| XI EO 'CF "4/4" | 4: "OCT"423; " | , XI U 'CF "4/4" | , 46"OCT"4244" |
| XI EO 'CF "4/5" | 32"QEV"423; " | XI U 'CF "4/5" | 52"ICP "4242" |
| XI EO 'CF "4/6" | 32"QEV"423; " | XI U 'CF "4/6" | 52"ICP "4242" |
| XI EO 'CF "4/7Ej ctv' | 32"QEV"423; " | XI U 'CF "4/7Ej ctv' | 36"QX"4235" |
| , XI K'CF "4/3" | , 46"OCT"4244" | XI VL'CF "4/3" | 25"LWP "4232" |
| , XI K'CF "4/4" | , 46"OCT"4244" | XI VL'CF "4/4" | 25"LWP "4232" |
| , XI K'CF "4/5" | , 46"OCT"4244" | , XI VL'CF "4/5" | , 46"OCT"4244" |
| , XI K'CF "4/6" | , 46"OCT"4244" | , XI VL'CF "4/6" | , 46"OCT"4244" |
| XI K'CF "4/7" | 25"LWP "4232" | XI VL'CF "4/7" | 32"QEV"423; " |
| XI K'CF "4/9Ej ctv' | 45"LWP "4238" | XI VL'CF "4/8" | 32"QEV"423; " |
| XI K'CF "4/; E j ctv' | 2: "FG"4238" | XI VL'CF "4/9Ej ctv' | 45"LWP "4238" |
| XI K'CF "4/33Ej ctv' | 2: "FG"4238" | " | " |
| XI LT'CF "4/3" | 4: "OCT"423; " | " | " |
| XI LT'CF "4/4" | 4: "OCT"423; " | " | " |
| , XI LT'CF "4/5" | , 46"OCT"4244" | " | " |
| , XI LT'CF "4/6" | , 46"OCT"4244" | " | " |
| XI LT'CF "4/7" | 32"QEV"423; " | " | " |
| XI LT'CF "4/8" | 32"QEV"423; " | " | " |
| XI LT'CF "4/9" | 32"QEV"423; " | " | " |

"

"

"

"

"

"

"

"

"

"

CR'CO F V"2344" " " " " " " " " " " " "EK'N'CXK'VQP 'CWJ QTKV["

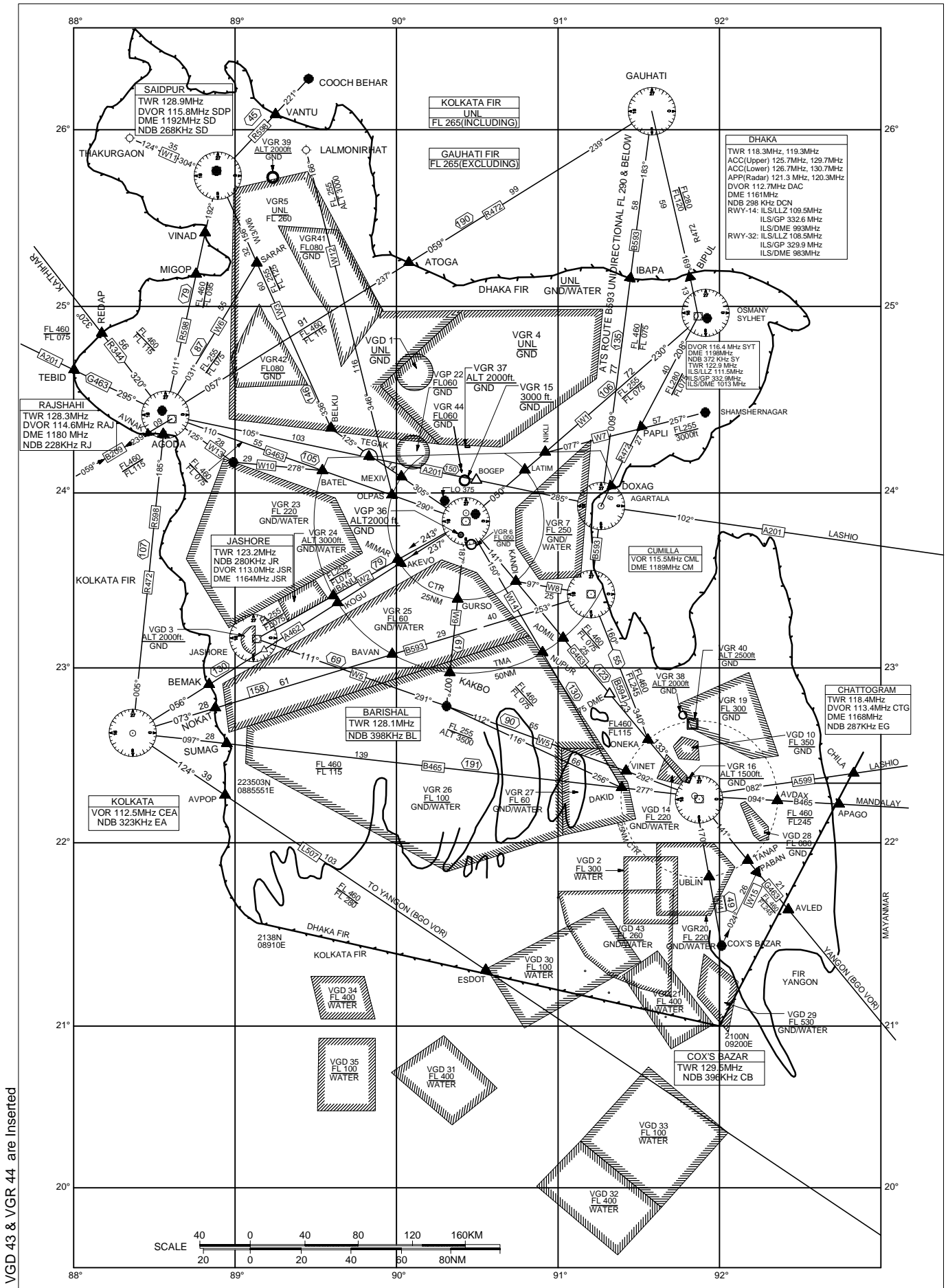
"

| Route Designator Name of Significant Points Co-ordinates | Track MAG (GEO) VOR RDL DIST (COP) | Upper Limits Lower Limits MFA Airspace Classification | Lateral Limits (NM) | Direction of Cursing Levels | | Remarks Controlling Unit Frequency |
|--|---|---|---------------------------|-----------------------------------|------|--|
| | | | | Odd | Even | |
| 1 | 2 | 3 | 4 | 5 | | 6 |
| B209 | | | | | | |
| ▲AVNAK 242143.54N 0882844.35E | | | 10 | ↓ | ↑ | Airway FIS below Airway Dhaka ACC 126.7/ 125.7 MHz |
| | 059° 239° 9 NM | FL 460 FL 115 2700 ft Class B | | | | |
| ▲VOR RAJ 242620.36N 0883654.83E | | | | | | |
| B 465 | | | | | | |
| ▲SUMAG 223539N 088526E | | | 10 | ↓ | ↑ | Airway BTN FL 460 & FL 115 Dhaka ACC 126.7/ 125.7 M Hz outside Chattogram CTR CTG TWR 118.4MHz (HO) within Chattogram CTR Military training area (VGR26) below airway |
| | 277° 097° 139 NM | FL 460 FL 115 2000 ft Class B | | | | |
| ▲DAKID 221833N 0912250E | | | | | | |
| | 277° 097° 25 NM | FL 460 2000 ft 2000 ft Class C/B | | | | |
| ▲VOR CTG 221527.90N0914938.98 E | | | | | | |
| | 094° 274° 25 NM | | | | | |
| ▲AVDAX 221333N 0921625E | | | 20 | ↓ | ↑ | Airway BTN FL 460 & FL 245 ATAS: below FL 245 and above FL 150 FIS at or below FL150 Dhaka ACC 126.7/ 125.7 M Hz |
| | 094° 274° 22 NM | FL 460 FL 245 3500 ft Class B | | | | |
| ▲APAGO 221211N 0924013E | | | | | | |

| Route Designator Name of Significant Points Co-ordinates | Track MAG (GEO) VOR RDL DIST (COP) | Upper Limits Lower Limits MFA Airspace Classification | Lateral Limits (NM) | Direction of Cursing Levels | | Remarks Controlling Unit Frequency |
|--|---|---|---------------------------|-----------------------------------|---|--|
| | | | | Odd | Even | |
| 1 | 2 | 3 | 4 | 5 | | 6 |
| ▲ADMIL 231051N 0905926E | | | 10 | ↓ | Airway Dhaka ACC 125.7 MHz/ 126.7 MHz outside Chattogram CTR FIS below Airway ATCS within Chattogram CTR. Chattogram TWR 118.4 MHz within Chattogram CTR. | |
| | 141° 321° 25 NM | FL 460 FL 075 2000 ft Class B | | | | |
| △75 DME DAC | | | | | | |
| | 141° 321° 23 NM | FL 460 FL 115 3000 ft Class B | | | | |
| ▲ONEKA 223448N 0913214E | | | | | | |
| | 141° 321° 25 NM | FL 460 FL 145 3500 ft Class C | | | | |
| ▲VOR CTG 221527.90N 0914938.98E | | | | | | |
| | 141° 321° 25 NM | | | | | |
| ▲TANAP 215627N 0920637E | | | 20 | ↑ | Airway Dhaka ACC 125.7 MHz/ 126.7 MHz ATAS below FL 245 and above FL 150. FIS at or below FL150. | |
| | 141° 321° 21 NM | FL 460 FL 245 4500 ft Class B | | | | |
| ▲AVLED 214003N 0922049E | | | | | | |
| R344 | | | | | | |
| ▲REDAP 245400N 0881115E | | | 10 | ↓ | Airway Dhaka ACC 125.7 MHz/ 126.7 MHz. Route segment between KTM VOR to RAJ VOR is unidirectional. | |
| | 140° 320° 36 NM | FL 460 FL 115 2000 ft Class B | | | | |
| ▲VOR RAJ 242621.18N 0883654.10E | | | | | | |

| F CPI GT. 'TGUVTKVGF 'CP F 'RTQJ KDK/GF 'CTGCU' | | |
|---|---|--|
| K gp v h e c v k p . 'p c o g 'c p f 'r v g t c i h o k u " | W r g t 'N k o k ' N q y g t 'N k o k ' | T g o c t m i " * V l o g 'q h 'c e v x k k { . ' V { r g 'q h 't g u t k e v k p . ' p c w t g 'q h ' j c c t f . ' t k m i q h l l p v g t e g r v k p + " |
| 3" | 4" | 5" |
| <p>VGD 43 (COX'S BAZAR)</p> <p>Ctgc"dqwpf gf "d{ 'hpgu'lqkpkpi " uweeguukxgn{ 'd{ 'yj g'hmqy kpi 'r qkpw<</p> <p>436472P ""2; 3646; G" 432522P ""2; 36422G" 432822P ""2; 35278G" 43327: P ""2; 33: 77G" 433: 27P ""2; 33227G" 435222P ""2; 3247: G" 436427P ""2; 32222G" 436472P ""2; 3646; G"</p> | <p><u>HN"482"</u> I P F I Y C V G T "</p> | <p>Cevkxg<F cvg'cpf "Rgtkqf "qh'cevxxk{ 'y km'dg" pqv h g f "d{ 'P Q V C O O ' Ck 'vq' Ck 'O k u l k g 'H k l p i O '</p> |
| <p>VGR 44 (DHAKA)</p> <p>Ctgc"dqwpf gf "d{ 'hpgu'lqkpkpi " uweeguukxgn{ 'd{ 'yj g'hmqy kpi 'r qkpw<</p> <p>46294; 06P ""2; 24557067G" 462944087P ""2; 24653083G" 462852063P ""2; 24635086G" 46284; 06P ""2; 24555062G" 46294; 06P ""2; 24557067G"</p> | <p><u>4222"hn"</u> I P F "</p> | <p>Cevkxg<J "46"</p> |

PROHIBITED RESTRICTED AND DANGER AREA - CHART



VGD 43 & VGR 44 are inserted

AD 1.4 GROUPING OF AERODROMES

1. The criteria applied by Bangladesh in grouping aerodromes for the provision of information in this AIP is as follows:
 - 1.1 **Primary/Major international aerodromes**
 - 1.1.1 The aerodrome of entry and departure for international air traffic, where all formalities concerning customs, immigration, health, animal and plant quarantine and similar procedures are carried out and where air traffic services are available on a regular basis.
 - 1.2 **Secondary/Other international aerodrome**
 - 1.2.1 Another aerodrome available for the entry of departure of international air traffic, where the formalities concerning customs, immigration, health and similar procedures and air traffic services are made available, on a restricted basis, to flights with prior approval only.
 - 1.3 **National aerodrome**
 - 1.3.1 An aerodrome available only for domestic air traffic.

AD 1.5 STATUS OF CERTIFICATION OF AERODROMES

A list of aerodromes in Bangladesh including the status of certification, including

- 1) aerodrome name and ICAO location indicator,
- 2) date if applicable, validity of certificate and remarks if any.

LIST OF INTERNATIONAL AERODROMES

| Sl Nr | Name of aerodrome | ICAO Location indicator | Date of certificate issue /renewal date | Certificate validity | | Remark |
|----------|---|-------------------------------|--|----------------------|------------|---------------|
| | | | | From | To | |
| 1 | Hazrat Shahjalal International Airport, Dhaka | VGHS | 27/10/2020 | 27/10/2020 | 26/10/2022 | Renewal |
| 2 | Shah Amanat International Airport, Chattogram | VGEG | 19/10/2021 | 31/10/2021 | 30/10/23 | Renewal |
| 3 | Osmani International Airport, Sylhet | VGSY | 18/11/2020 | 18/11/2020 | 17/11/2022 | Initial Issue |

INTENTIONALLY LEFT BLANK

AD 2. AERODROMES

VGHS AD 2.1 AERODROME LOCATION INDICATOR AND NAME

VGHS- HAZRAT SHAHJALAL INTERNATIONAL AIRPORT, DHAKA.

VGHS AD 2-2 AERODROME GEOGRAPHICAL AND ADMINISTRATION DATA

| | | |
|----|---|--|
| 1 | ARP Coordinates and site at AD | 235036.05N 0902352.02E(Centre of the runway) |
| 2. | Distance and direction from city | 11NM (20km) north of Dhaka City (GPO) |
| 3. | Aerodrome elevation Reference temperature | ELEV 27 FT (8M) T 35 ^o c (April) |
| 4. | MAG VAR | 1 ^o W in 1967 (Annual change negligible) |
| 5. | Aerodrome administration, address, telephone, Telefax, AFS, E-mail. | Civil Aviation Authority of Bangladesh Postal Address:ExecutiveDirector Hazrat Shahjalal International Airport Kurmitola, Dhaka-1229, Bangladesh. Telephone: 88-02- 8901449, Telefax : 88-02- 8901450 AFS : VGHSYDYX Telegram : Civil drome,Dhaka. E-mail : edhsia@caab.gov.bd |
| 6 | Types of traffic permitted | IFR/VFR |
| 7 | Remarks | Nil |

VGHS AD 2-3 OPERATIONAL HOURS

| SL. NR. | Services | Hours |
|---------|----------------------------|--|
| 1. | Aerodrome Administration | 0900 LT to 1700 LT Except Friday, Saturday & Government Holidays |
| 2. | Custom and Immigration | H24 |
| 3. | Health and Sanitation | H24 |
| 4. | AIS briefing office | H24 |
| 5. | ATS reporting office (ARO) | H24 |
| 6. | MET briefing office | H24 |
| 7. | Air traffic service | H24 |
| 8. | Fuelling | H24 |
| 9. | Handling | H24 |
| 10. | Security | H24 |
| 11. | De-icing | NIL |
| 12. | Remarks | NIL |

VGHS AD 2.4 HANDLING SERVICES AND FACILITIES

| | | |
|----|---|---|
| 1 | Cargo handling facilities | 01 Mobile cranes 12 Container pallet loaders 09 Container pallet transporters 10 Belt loaders 22 Baggage tow tractors 50 Cargo/Baggage trolleys 145 Container trolleys/dollies 45 Hand trolleys 09 Fork lifters 01 Narrow Aisle stacker 75 Pallet Trolley |
| 2 | Fuel/Oil Types | Jet A-1 AVGAS 100LL, Pack drum |
| 3 | Fueling facilities/Capacity | Hydrant dispenser, Bowser refueling for 24 hours. |
| 4. | De-icing facilities | NIL requirement |
| 5. | Hangar space for visiting aircraft | By arrangement with Biman Bangladesh Airlines (BBC) |
| 6. | Repair facilities for visiting aircraft | Limited |
| 7. | Remarks | Nil |

VGHS AD 2.5 PASSENGER FACILITIES

| | | |
|----|--------------------------|--|
| 1 | Hotels | One 5 Star hotel at Nikunja (2 km towards city), Unlimited in Dhaka city. |
| 2. | Restaurant accommodation | Limited at the Airport, Unlimited in Dhaka City |
| 3. | Transportation available | Buses, Taxis and Trains to Dhaka City. |
| 4. | Medical facilities | 24 hours doctor avbl from Health Dept. Ambulance avbl 24 H, Hospitals and Clinic avbl within 1 NM. |
| 5. | Banks | Available at Airport |
| 6. | Tourist office | Available at Airport |
| 7. | Post Office | Not available at Airport, but available at Hajj Camp (1KM) |
| 8. | Remarks | International address: http://www.caab.gov.bd for any Information |

| | | | | | | |
|-----|---|-------------|-------------|-----|-------|-----|
| 24. | Mohakhali Tower, H#82, Mohakhali | 234651.40 N | 902414.00 E | 265 | 80.77 | Yes |
| 25. | Medona Tower, H#28, Mohakhali. | 234651.80 N | 902417.10E | 224 | 68.28 | Yes |
| 26. | Rupayon Center, H# 72, Mohakhali | 234649.30N | 902421.20E | 278 | 84.73 | Yes |
| 27. | Nitol Center, H # 71, Mohakhali | 234649.30 N | 902421.90 E | 222 | 67.67 | Yes |
| 28. | IL Engineers Bhaban, H#69, Mohakhali. | 234649.10 N | 902423.20 E | 300 | 91.44 | Yes |
| 29. | Square Center, HH#48, Mohakhali | 234650.40 N | 902425.70 E | 261 | 79.55 | Yes |
| 30. | BRAC University, H#66, Mohakhali | 234648.00 N | 902425.70 E | 265 | 80.77 | Yes |
| 31. | BAY, H#50, Mohakhali. | 234649.80 N | 902427.30 E | 267 | 81.38 | Yes |
| 32. | Kaderia Tower, 28/8-B, Mohakhali | 234649.70 N | 902436.90 E | 208 | 63.40 | Yes |
| 33. | BRAC Center, H# 75, Mohakhali | 234647.70 N | 902436.70 E | 288 | 87.78 | Yes |
| 34. | Rangs Water Front, H#1, Gulshan I | 234652.60 N | 902442.90 E | 234 | 71.32 | Yes |
| 35. | GulshanVill, H#3, Gulshan-1 | 234653.10 N | 902447.50 E | 209 | 63.70 | Yes |
| 36. | Navana Tower, H#45, Gulshan-1 | 234448.90 N | 902500.60 E | 314 | 95.71 | Yes |
| 37. | Jabbar Tower, H#42, Rd#135, Gulshan-1 | 234646.80 N | 902500.90 E | 245 | 74.68 | Yes |
| 38. | F & I Tower, H#220/A/1, West Kafrul. | 234715.50 N | 902237.90 E | 141 | 42.98 | Yes |
| 39. | P.R.Tower, H#924/1, Shewrapara. | 234729.50 N | 902231.60 E | 142 | 43.28 | Yes |
| 40. | Arabian Tower , H#849/3, Shewrapara. | 234723.20 N | 902234.60 E | 138 | 42.06 | Yes |
| 41. | Youth Group, H#822/2, East Kafrul. | 234719.20 N | 902235.90 E | 159 | 48.46 | Yes |
| 42. | MisamiBitopi, H#822/3, East Kafrul. | 234718.50 N | 902236.50 E | 167 | 50.90 | Yes |
| 43. | DGFI Office, Kachukhet, Dhaka Cant. | 234725.90 N | 902318.10 E | 239 | 72.85 | Yes |
| 44. | IDB Bhaban, E/8, Agargaon. | 234642.60 N | 902245.80 E | 320 | 97.54 | Yes |
| 45. | LGED-RDEC BhabanAgargaon. | 234641.10 N | 902240.30 E | 219 | 66.75 | Yes |
| 46. | Asha Tower, 23/3, Shyamoli. | 234624.30 N | 902200.00 E | 205 | 62.48 | Yes |
| 47. | BijoySharoni, Tower, 121/3, Tejkunipara | 234550.20 N | 902323.00 E | 155 | 47.24 | Yes |

1. STANDARD INSTRUMENT DEPARTURES (SIDs)-HSIA, DHAKA

All take-off shall be noise abated.
Factors common to all SIDs are:

- i) The radials shall be reference to the Dhaka VOR
- ii) Aircraft should intercept their cleared track by 10 DME Dhaka.
- iii) All references to altitude shall be QNH.

DEPARTURE RUNWAY 14

| ATS route Designator | TMA Boundary Designator | SID Designator | Routing after take- off |
|----------------------|-------------------------|----------------|--|
| W1 | NIKLI | NIKLI ONE | Maintain Runway heading to 1000 ft then turn left to intercept the 050 radial. |
| | | NIKLI ONE ALFA | Maintain Runway heading to 2000 ft then turn left to intercept the 050 radial. |
| G463 | ADMIL | ADMIL ONE | Intercept the 141 radial. |
| A462 | IKOGU | IKOGU ONE | Maintain Runway heading to 1000 ft then turn right and cross radial 175 at or above 2000 ft to intercept 237 radial. |
| | | IKOGU ONE ALFA | Maintain Runway heading to 2000 ft then turn right to intercept 237 radial. |
| W2 | IBANU | IBANU ONE | Maintain Runway heading to 1000 ft then turn right and cross radial 175 at or above 2000 ft to intercept 243radial. |
| | | IBANU ONE ALFA | Maintain Runway heading to 2000 ft then turn right to intercept 243radial. |
| G463 | BATEL | BATEL ONE | Maintain Runway heading to 1000 ft then turn right and cross radial 175 at or above 2000 ft to intercept 290 radial. |
| | | BATEL ONE ALFA | Maintain Runway heading to 2000 ft then turn right to intercept 290 radial. |
| W3 | TEGAK | TEGAK ONE | Maintain Runway heading to 1000 ft then turn right and cross radial 175 at or above 2000 ft to intercept 305 radial. |
| | | TEGAK ONE ALFA | Maintain Runway heading to 2000 ft then turn right to intercept 305 radial. |
| W9 | KAKBO | KAKBO ONE | Maintain Runway heading to 1000 ft then turn right and cross radial 175 at or above 2000 ft to intercept 187 radial. |
| | | KAKBO ONE ALFA | Maintain Runway heading to 2000 ft then turn right to intercept 187 radial. |
| W14 | NUPUR | NUPUR ONE | Intercept the 150 radial. |
| | | NUPUR ONE ALFA | Maintain Runway heading to 2000 ft then turn right to intercept 150 radial. |

AD 2 AERODROMES

VGEG AD 2.1 AERODROME LOCATION INDICATOR AND NAME

VGEG –SHAH AMANAT INTERNATIONAL AIRPORT, CHATTOGRAM

VGEG AD 2.2 AERODROME GEOGRAPHICAL AND ADMINISTRATION DATA

| | | |
|---|---|--|
| 1 | ARP and its site | 221525.28N 0914919.95E, on the RWY |
| 2 | Direction and distance from city | South of City Railway Station; 10 NM |
| 3 | AD elevation and reference temperature | ELEV: 14 ft T : 32° C (April) |
| 4 | MAG VAR | 1° W in 1985 (Annual change negligible) |
| 5 | AD Operator, address, telephone, telefax, AFS | Civil Aviation Authority of Bangladesh Postal Address: Shah Amanat International Airport, Chattoqram, Bangladesh. Telephone: Director, SAIA : +88 02 41350100 Control Tower : +88 02 41350105 Fax : +88 02 41350101 E-mail : dsaiactg@caab.gov.bd AFS : VGEGYDYX |
| 6 | Types of traffic permitted | IFR/VFR |
| 7 | Remarks | Nil |

VGEG AD 2.3 OPERATIONAL HOURS

| OPERATIONAL HOURS | | |
|-------------------|----------------------------|--|
| Sl. Nr | Service | Hours |
| 1 | Aerodrome Operator | 0900 LT to 1700 LT except FRI, SAT and public holidays |
| 2 | Custom and Immigration | HO |
| 3 | Health and sanitation | HO |
| 4 | AIS briefing office | HO |
| 5 | ATS reporting office (ARO) | HO |
| 6 | MET briefing office | H24 |
| 7 | Air Traffic Service | HO |
| 8 | Fuelling | HO |
| 9 | Handling | HO |
| 10 | Security | HO |
| 11 | De-icing | NIL |
| 12 | Remarks | NIL |

VGEG AD 2.4 HANDLING SERVICES AND FACILITIES

| | | |
|---|---|--|
| 1 | Cargo-handling facilities | Manual handling |
| 2 | Fuel and Oil types | SAG 100/130, JET A-1, AVGas 100 LL, Limited Quantity stored in drums. |
| 3 | Fuelling facilities and capacity | Hydrant dispenser, Bowser refueling, |
| 4 | De-icing facilities | NIL requirement |
| 5 | Hangar space for visiting aircraft | NIL |
| 6 | Repair facilities for visiting aircraft | NIL |
| 7 | Remarks | NIL |

VGEG AD 2.5 PASSENGER FACILITIES

| | | |
|---|--|---|
| 1 | Hotels at or in the vicinity of the AD | Nil at the Airport, AVBL in Chattogramcity. |
| 2 | Restaurant at or in the vicinity of the AD | AVBL |
| 3 | Transportation possibilities | Yes |
| 4 | Medical facilities | First aid treatment AVBL |
| 5 | Bank and Post Office at or in the vicinity of the AD | AVBL |
| 6 | Tourist office | AVBL |
| 7 | Remarks | Nil |

VGEG AD 2.6 RESCUE AND FIRE FIGHTING SERVICES

| | | |
|---|-------------------------------|---|
| 1 | AD Category for fire fighting | CAT: 7 AVBL: 7 |
| 2 | Rescue equipment | AVBL to meet the ICAO requirement for CAT 7 and CAT 8 |
| 3 | Disabled Aircraft Removal | Nil |
| 4 | Remarks | AD CAT 8 for firefighting is maintained as and when required. |

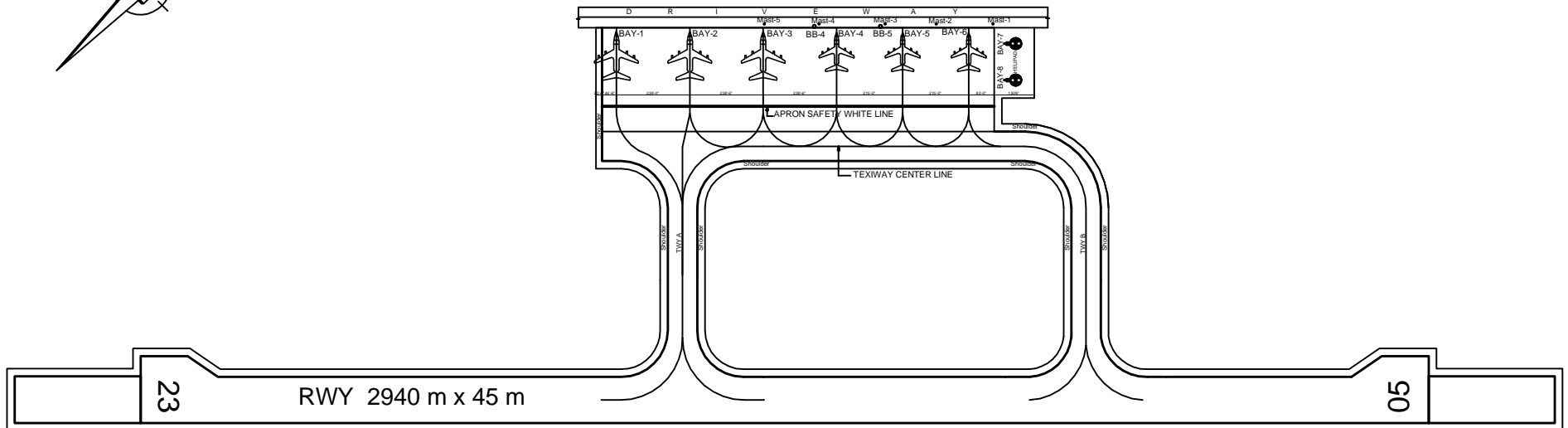
PARKING AND DOCKING CHART

SHAH AMANAT INTERNATIONAL AIRPORT, CHATTOGRAM

MAGNETIC VARIATION 1° W



PARKING & DOCKING CHART
OF
SHAH AMANAT INTERNATIONAL AIRPORT, CHATTOGRAM



| |
|-------------------------------------|
| BAY 1-22°14'51.16"N, 091°48'58.14"E |
| BAY 2-22°14'49.60"N, 091°48'56.25"E |
| BAY 3-22°14'48.03"N, 091°48'54.35"E |
| BAY 4-22°14'46.46"N, 091°48'52.46"E |
| BAY 5-22°14'45.05"N, 091°48'50.75"E |
| BAY 6-22°14'43.64"N, 091°48'49.05"E |
| BAY 7-22°14'43.21"N, 091°48'47.63"E |
| BAY 8-22°14'44.08"N, 091°48'46.80"E |

| |
|--------------------------------------|
| Electrical Mast Hight 25m |
| Mast 1-22°14'43.20"N, 091°48'48.42"E |
| Mast 2-22°14'44.28"N, 091°48'50.04"E |
| Mast 3-22°14'45.42"N, 091°48'51.12"E |
| Mast 4-22°14'46.80"N, 091°48'53.04"E |
| Mast 5-22°14'47.94"N, 091°48'54.36"E |

| |
|------------------------------------|
| BB 4-22°14'46.98"N, 091°48'51.72"E |
| BB 5-22°14'45.60"N, 091°48'51.12"E |

Location Spelling Corrected

VGJR AD 2.10 AERODROME OBSTACLES

| Sl.Nr | Name of the Critical Points/Obstacles/Structures | WGS-84 Co-ordinates | | Elevation | Remarks |
|-------|--|---------------------|----------------|-----------|--|
| | | Latitude | Longitude | Feet | |
| 1. | DVOR | 23°12'06.37" N | 89°09'10.37" E | 50 | |
| 2. | NDB | 23°10'30.57" N | 89°09'42.31" E | 79 | |
| 3. | Control Tower | 23°10'38.17" N | 89°09'38.85" E | 127 | |
| 4. | Robi Mobile Tower (On the roof of Ms Orchid Centre), 44 M K Road | 23°09'54.35"N | 89°12'48.26"E | 222 | |
| 5. | Civil Apron Mast Light 1 | 23°10'37.42" N | 89°09'39.81" E | 103 | |
| 6. | Civil Apron Mast Light 2 | 23°10'34.43" N | 89°09'41.26" E | 104 | |
| 7. | Civil Apron Mast Light 3 | 23°10'31.30" N | 89°09'42.88" E | 104 | |
| 8. | Police Line Mast | 23°10'25.16" N | 89°11'42.16" E | 227 | |
| 9. | DGFI Mast, Jashore Cantonment | 23°10'27.47" N | 89°11'08.49" E | 181 | |
| 10. | Wind Socks RWY-34 | 23°10'35.06" N | 89°09'48.12" E | 42 | |
| 11. | Wind Socks RWY-16 | 23°11'31.10" N | 89°09'29.52" E | 46 | |
| 12. | Noapara Radio Mast | 23°02'55.91" N | 89°22'47.00" E | 400 | |
| 13. | Arresting Barriers | --- | --- | 31 | 386 ftmRWY 16, 94 ftm THRRWY 34 |
| 14. | VDF Aerial Mast | --- | --- | 110 | 173 ⁰ MAGfm THR RWY 16 |
| 15. | GCA Radar | --- | --- | 60 | 1179 m (SE) fm THR RWY 16 and 132.08 m off set fm RWY centre line |
| 16. | Rajarhat Mast | 230830.60N | 891432.46E | 318 | 5NM on BRG 111 ⁰ M fm Control TWR |
| 17. | Garrison Mosque | --- | --- | 115 | 050 ⁰ MAGfm Control TWR1.7 km (approx) |

VGJR AD 2.11 METEOROLOGICAL INFORMATION PROVIDED

| | | |
|----|---|------------------------------------|
| 1 | Associated MET office | JashoreAirport (VGJR) |
| 2 | Hours of service | HJ |
| 3 | Office responsible for TAF preparation Periods of validity (Hours) | HazratShahjalalIntl Airport (VGHS) |
| 4 | Type of landing forecast Interval of issuance (Hours) | |
| 5 | Briefing/ consultation provided | P, D, T |
| 6 | Flight documentation languages used | C, PL English |
| 7 | Charts and other information available for briefing or consultation | S, U |
| 8 | Supplementary equipment available for providing information | |
| 9 | ATS units provided with information | TWR |
| 10 | Additional information | Tel: Nil |

VGJR AD 2.12 RUNWAY PHYSICAL CHARACTERISTICS

| Designator RWY NR | TRUE & MAG BRG | Dimensions of RWY (m) | Strength (PCN) and surface of RWY & SWY | THR Coordinates | THR elevation (FT) | Slope of RWY-SWY |
|----------------------|-------------------|--------------------------|---|----------------------------|--------------------------|---------------------|
| 1 | 2 | 3 | 4 | 5 | 6 | 7 |
| 16 | 157° TRUE | 2420X45 | PCN 18F/C/Y/T Bituminous concrete | 231137.94 N 890922.92 E | 20 | 0% |
| 34 | 337° TRUE | 2420X45 | | 231025.65 N 890955.32 E | 20 | 0% |

| Designator RWY NR | SWY dimensions (m) | CWY dimensions (m) | RESA | Strip dimensions (m) | OFZ | Remarks |
|----------------------|--------------------------|--------------------------|-------|-------------------------|----------------|---------|
| | 8 | 9 | 10 | 11 | 12 | 13 |
| 16 | NIL | 150 X 150 | 90X90 | 2618 X 150 | Within the CWY | Nil |
| 34 | 60 X 45 | 210 X 150 | 90X90 | 2618 X 150 | Within the CWY | Nil |

VGJR AD 2.13 DECLARED DISTANCES

| RWY | TORA (m) | TODA (m) | ASDA (m) | LDA (m) | REMARKS |
|-----|----------|----------|----------|---------|--------------------------------|
| 1 | 2 | 3 | 4 | 5 | 6 |
| 16 | 2420 | 2570 | 2420 | 2420 | Due to introduction of RESA |
| 34 | 2420 | 2630 | 2480 | 2420 | |

VGJR AD 2.14 APPROACH AND RUNWAY LIGHTING

| RWY designator | APCH | THR | PAPI | TDZ | RWY centre | RWY edge | END & WBAR | STWL | Remarks |
|-------------------|--|---------------------|------|-----|---------------|--|--|------|-------------------------|
| 1 | 2 | 3 | 4 | 5 | 6 | 7 | 8 | 9 | 10 |
| 16 | Simple Approach lighting system | Six green LGT | PAPI | NIL | NIL | 60 m apart 73 Nr White Omni- directional with fixed intensity | END: Avbl 6 Red LGT Unidirectional | NIL | Kerosene flares avbl |
| 34 | NIL | Six green LGT | PAPI | NIL | NIL | 60 m apart 73 Nr White Omni- directional with fixed intensity | | NIL | |

VGCB AD 2.1 AERODROME LOCATION INDICATOR AND NAME

VGCB –COX’S BAZAR AIRPORT, COX’S BAZAR.

VGCB AD 2.2 AERODROME GEOGRAPHICAL AND ADMINISTRATION DATA

| | | |
|---|--|--|
| 1 | ARP coordinates and site at AD | 212718.70 N 915749.57 E, Centre of the RWY. |
| 2 | Distance and direction from city | 02 km from city centre |
| 3 | AD elevation/reference temperature | 12 ft/ 340C |
| 4 | MAG VAR | 50’’ W |
| 5 | AD administration, address, telephone, telefax, telex, AFS | Civil Aviation Authority of Bangladesh Postal address: Airport Manager, Cox’s Bazar Airport, Cox’s Bazar, Bangladesh Telephone: APM: +88-0341-64479 (Off), +88- 0341-64075 (Res) TWR: +88-0341-62010 |
| 6 | Types of traffic permitted IFR/VFR | IFR/VFR |
| 7 | Remarks | Nil |

VGCB AD 2.3 OPERATIONAL HOURS

| SL Nr. | Services | Hours |
|--------|----------------------------|---|
| 1 | Aerodrome Administration | 0900LT to 1700 LT except FRI, SAT & Government Holidays |
| 2 | Custom and Immigration | Nil |
| 3 | Health and Sanitation | HO |
| 4 | AIS briefing office | Nil |
| 5 | ATS reporting office (ARO) | HO |
| 6 | MET briefing office | HJ |
| 7 | Air traffic services | HO |
| 8 | Fueling | Nil |
| 9 | Handling | Nil |
| 10 | Security | HO |
| 11 | De-icing | Nil |
| 12 | Remarks | Nil |

VGCB AD 2.4 HANDLING SERVICES AND FACILITIES
NIL

VGCB AD 2.5 PASSENGER FACILITIES

| | | |
|---|--------------------------|---|
| 1 | Hotels | AVBL |
| 2 | Restaurant | AVBL |
| 3 | Transportation available | Taxi, Microbus, Auto -rickshaws and Rickshaws |
| 4 | Medical facilities | AVBL |
| 5 | Banks and Post Office | AVBL |
| 6 | Tourist office | AVBL |
| 7 | Remarks | Cox's Bazar is the most important tourist spot in Bangladesh and longest sea beach in the world |

VGCB AD 2.6 RESCUE AND FIRE FIGHTING SERVICES

| | | |
|---|-------------------------------|----------------|
| 1 | AD Category for fire fighting | CAT: 7 AVBL: 7 |
| 2 | Rescue Equipment | AVBL |
| 3 | Disabled Aircraft Removal | Nil |
| 4 | Remarks | Nil |

VGCB AD 2.7 SEASONAL AVAILABILITY CLEANING

2.7.1 The airport is available for all seasons, Side strips become unusable during monsoon. There is no requirement for clearing.

VGCB AD 2.8 APRONS, TAXIWAYS AND CHECK LOCATIONS DATA

| | | |
|---|-------------------------------------|--|
| 1 | Apron surface and strength | Surface: Bituminous Concrete Strength: PCN 63/R/C/W/T |
| 2 | Taxiway width, surface and strength | Width:15 M Surface: Bituminous Concrete Strength: PCN 63/R/C/W/T |
| 3 | ACL location and elevation | Not designated |
| 4 | Remarks | NIL |

VGCB AD 2.9 SURFACE MOVEMENT GUIDANCE AND CONTROL SYSTEM AND MARKINGS

| | | |
|---|--|---|
| 1 | Stand identification/taxiway guide lines/visual docking/parking guidance | Taxiing guidance signs at all intersections TWY and RWY at all holding positions. Guidelines at apron. Nose- in guidance at aircraft stands. |
| 2 | RWY and TWY markings and LGT | RWY markings: THR, Centre line RWY designator: Both runways TWY markings: RWY holding position and TWY centre line RWY LGT: Edge LGT, THR LGT and End LGT TWY LGT: Edge LGT |
| 3 | Stop bars | NIL |
| 4 | Remarks | NIL |

VGCB AD 2.10 AERODROME OBSTACLES

| Sl.Nr. | Name of the Critical Points/Obstacles/ Structures | WGS-84 Co-ordinates | | Elevation | |
|--------|--|---------------------|----------------|-----------|-------|
| | | Latitude | Longitude | Feet | Meter |
| 1. | Mobile Tower on the roof of Towrat Tower, MozammelHoque road, Jetty no.6 | 21°26'55.45" N | 91°58'08.41" E | 109.35 | 33.33 |
| 2. | Flood Light Mast, Airport Compound | 21°26'58.47" N | 91°58'02.31" E | 93.53 | 28.51 |
| 3. | Control Tower | 21°27'04.22" N | 91°57'58.82" E | 57.09 | 17.40 |
| 4. | BTCL Tower (T&T), Beach Road | 21°26'25.80" N | 91°58'11.66" E | 130.91 | 39.90 |
| 5. | HF Antenna (Control Tower Long Antenna) | 21°27'04.22" N | 91°57'58.82" E | 70.79 | 21.58 |
| 6. | Hotel Sonargaon | 21°26'34.28" N | 91°58'16.45" E | 142.49 | 43.43 |
| 7. | Hotel Alin Park | 21°26'30.37" N | 91°58'06.22" E | 91.31 | 27.83 |
| 8. | Hotel Sea View | 21°26'29.53" N | 91°58'04.92" E | 64.64 | 19.70 |
| 9. | Hotel Sands Beach, Jhowtala | 21°26'28.57" N | 91°58'04.47" E | 56.65 | 17.27 |
| 10. | Radar Mast, Kolatali | 21°25'04.51" N | 91°59'14.52" E | 338.24 | |

VGCB AD 2.11 METEOROLOGICAL INFORMATION PROVIDED

| | | |
|----|--|------------------------------------|
| 1 | Associated MET office | Cox's Bazar Airport (VGCB) |
| 2 | Hours of service | HJ |
| 3 | Office responsible for TAF preparation and periods of validity | Cox's Bazar Airport (VGCB) 6,12 |
| 4 | Type of landing forecast Interval of issuance (Hours) | ½ & Special |
| 5 | Briefing/ consultation provided | P |
| 6 | Flight documentation languages used | C,PL English |
| 7 | Charts and other information available for briefing or consultation | S,U |
| 8 | Supplementary equipment available for providing information | |
| 9 | ATS units provided with information | TWR |
| 10 | Additional information | Tel: 0341-63618 |

VGCB AD 2.12 RUNWAYS PHYSICAL CHARACTERISTICS

| RWY designations | TRUE BRG | Dimensions of RWY (m) | Strength (PCN) and surface of RWY & SWY | THR Coordinates | THR elevation (FT) | Slope of RWY-SWY |
|--------------------|-------------------|-----------------------|---|----------------------------|--------------------|------------------|
| 1 | 2 | 3 | 4 | 5 | 6 | 7 |
| 17 | 170 ⁰ | 2743X45 | PCN 90/F/C/W/T | 212802.79 N 915740.69 E | 11 | NIL |
| 35 | 350 ⁰ | 2743X45 | | 212634.99 N 915758.28 E | 12 | |
| 8 | 9 | 10 | 11 | 12 | 13 | 14 |
| Designation RWY NR | SWY dimensions(m) | CWY dimensions(m) | RESA | Strip Dimensions(m) | OFZ | Remarks |
| 17 | 150X60 | 60×150 | 90×76 | 2222×150 | Within the CWY | NIL |
| 35 | 150X60 | 270×150 | 90×76 | | | |

VGCB AD 2.13 DECLARED DISTANCES

| RWY | TORA(m) | TODA(m) | ASDA(m) | LDA(m) | REMARKS |
|-----|---------|---------|---------|--------|---------|
| 1 | 2 | 3 | 4 | 5 | 6 |
| 17 | 2743 | 2803 | 2893 | 2743 | NIL |
| 35 | 2743 | 3013 | 2893 | 2743 | NIL |

VGCB AD 2.14 APPROACH AND RUNWAY LIGHTING

RWY Edge LGT, THR LGT and PAPI LGT AVB but Approach LGT not AVBL

VGCB AD 2.15 OTHER LIGHTING, SECONDARY POWER SUPPLY

| | | |
|---|--|---|
| 1 | ABN/IBN location, characteristics and hours of operation | Nil |
| 2 | LDI location and LGT Anemometer location and LGT | NIL Atop control TWR, No. |
| 3 | TWY edge and center line lighting | NIL |
| 4 | Secondary power supply switch-over time | During main power supply failure, automatic standby generator power supply available within 30 seconds. |
| 5 | Remarks | Nil |

VGCB AD 2.16 HELICOPTER LANDING AREA

As directed by ATC

VGCB AD 2.17 AIR TRAFFIC SERVICES AIRSPACE

| | | |
|---|-------------------------|--|
| 1 | Designation | Aerodrome Traffic Zone (ATZ) |
| | Lateral limits | ATZ is oval shaped area joining outer tangents of 5 NM (9KM) radius circles centered at the RWY centre and both ends of RWY. |
| 2 | Vertical limits | 4000 ft (AMSL) |
| 3 | Airspace Classification | D |
| 4 | Unit/Language | Cox's Bazar Tower /English |
| 5 | Transition altitude | 4000 ft |
| 6 | Remarks | Nil |

VGIS AD 2.1 AERODROME LOCATION INDICATOR AND NAME

VGIS -ISHURDI AIRPORT, ISHURDI.

VGIS AD 2.2 AERODROME GEOGRAPHICAL AND ADMINISTRATION DATA

| | | |
|---|---|--|
| 1 | ARP co-ordinates an site at AD | 240912.57N, 890256.25E |
| 2 | Distance and direction from city | 03 NM North of Town. |
| 3 | AD elevation / reference temperature | 45FT/40.4°C |
| 4 | MAG VAR | 40' W |
| 5 | AD administration, address, telephone telefax, telex, AFS | Civil Aviation Authority of Bangladesh Postal address: Airport Manager Ishwardi Airport, Ishwardi Bangladesh Telephone: APM/TWR 07326-63569 |
| 6 | Types of traffic permitted IFR/VFR | IFR/VFR |
| 7 | Remarks | Nil |

VGIS AD 2.3 OPERATIONAL HOURS

| SL.Nr. | Services | Hours |
|--------|----------------------------|--|
| 1. | Aerodrome Administration | 0900 LT to 1700 LT except FRI, SAT & Government Holidays |
| 2. | Custom and Immigration | NIL |
| 3. | Health and Sanitation | HO |
| 4 | AIS briefing Office | NIL |
| 5 | ATS reporting Office (ARO) | HO |
| 6 | MET briefing Office | HO |
| 7 | Air traffic service | HO |
| 8 | Fueling | NIL |
| 9 | Handing | NIL |
| 10 | Security | HO |
| 11 | De-icing | NIL |
| 12 | Remarks | NIL |

VGIS AD 2.4 HANDLING SERVICES AND FACILITIES

NIL

VGIS AD 2.5 PASSENGER FACILITIES

| | | |
|---|--------------------------|------------------------------|
| 1 | Hotels | Nil |
| 2 | Restaurant | AVBL, capacity- 20 persons. |
| 3 | Transportation available | Buses, Rickshaws and Taxies. |
| 4 | Medical facilities | Only first aids avbl. |
| 5 | Banks an post Offices | Bank avbl. |
| 6 | Tourist office | Nil |
| 7 | Remarks | Nil |

VGIS AD 2.6 RESCUE AND FIRE FIGHTING SERVICES

| | | |
|---|-------------------------------|-----------------------|
| 1 | AD Category for dire fighting | CAT: NIL AVBL: NIL |
| 2 | Rescue Equipment | AVBL |
| 3 | Disabled Aircraft Removal | Nil |
| 4 | Remarks | Nil |

VGIS AD 2.7 SEASONAL AVAILABILITY CLEARING

2.7.1 The airport is available for all seasons. Side strips become unusable during monsoon. There is no requirement for clearing.

VGIS AD 2.8 APRONS, TAXIWAYS AND CHECK LOCATIONS DATA.

| | | |
|---|-------------------------------------|---|
| 1 | Apron surface and strength | Surface: Bituminous Concrete Strength: PCN 12/R/C/Y/T |
| 2 | Taxiway width, Surface and Strength | Width: 50 FT, 75 FT and 100 FT. Surface: Bituminous Concrete Strength: PCN 12/R/C/Y/T |
| 3 | ACL location and elevation | Not designated |
| 4 | Remarks. | NIL |

VGIS AD 2.9 SURFACE MOVEMENT GUIDANCE AND CONTROL SYSTEM ANDMARKING

| | | |
|---|---|--|
| 1 | Stand identification/ taxiway guide lines/ visual docking/ Parking guidance | Taxiing guidance signs at all intersections with TWY and RWY at all holding positions. Guidelines at apron. Nose-in guidance at aircraft stands. |
| 2 | RWY and TWY markings and LGT | RWY marking aids: THR, Centre line, RWY designator all runways TWY marking aids: TWY centre line-all TWYs. |
| 3 | Stop bars | Nil |
| 4 | Remarks | Nil |

VGIS AD 2.10 AERODROME OBSTACLES

| | | |
|---|--|--|
| 1 | Obstruction in approach and take-off areas | Obstruction in approach, take-off area and circling area are shown in instrument approach charts and Aerodrome Charts. |
| 2 | Obstruction in the circling area and at aerodrome. | |

VGIS AD 2.11 METEOROLOGICAL INFORMATION PROVIDED

2.11.1 Weather information will be provided by meteorological Department at the Airport.

VGIS AD 2.12 RUNWAY PHYSICAL CHARACTERISTICS

| Designator RWY NR | TRUE & MAG BRG | Dimensions of RWY(m) | Strength (PCN) and surface of RWY & SWY | THR Coordinates | THR elevation. | Slope of RWY- SWY |
|----------------------|--------------------|-------------------------|--|--------------------------|-------------------|-------------------------|
| 1 | 2 | 3 | 4 | 5 | 6 | 7 |
| 15 | 152 ^o T | 1433 X 23 | Flexible Pavement Bituminous Concrete | 240929.95N 890246.56E | 46ft | -- |
| 33 | 332 ^o T | 1433 X 23 | | 240848.77N 890309.47E | 46 ft | -- |

| Designator RWY NR | SWY Dimensions (m) | CWY dimensions (m) | Strip dimensions (m) | OFZ | Remarks |
|----------------------|-----------------------|-----------------------|----------------------|----------------|---------|
| | 8 | 9 | 10 | 11 | 12 |
| 15 | 91X23 | 305X153 | 1615X153 | Within the CWY | Nil |
| 33 | 91X23 | 305X153 | 1615X153 | Within the CWY | Nil |

VGIS AD 2.13 DECLARED DISTANCES

| RWY | TORA (m) | TODA (m) | ASDA (m) | LDA (m) | REMARKS |
|-----|----------|----------|----------|---------|---------|
| 1 | 2 | 3 | 4 | 5 | 6 |
| 15 | 1433 | 1738 | 1524 | 1433 | NIL |
| 33 | 1433 | 1738 | 1524 | 1433 | NIL |

VGIS AD 2.14 APPROACH AND RUNWAY LIGHTING

NIL

VGIS AD 2.15 OTHER LIGHTING, SECONDARY POWER SUPPLY

1. During Main Power supply failure, Automatic standby generator power supply available within 30 seconds.

VGIS AD 2.16 HELICOPTER LANDING AREA

AS directed by ATC

VGIS AD 2.17 AIR TRAFFIC SERVICES AIRSPACE.

| | | |
|---|---------------------|--|
| 1 | Designation | Aerodrome flight information zone (AFIZ) |
| | Lateral limits | AFIZ is circle of 5 NM radius centred at the RWY centre. |
| 2 | Vertical limits | 3000 ft (ALT) |
| 3 | Airspace | G |
| 4 | Unit | Ishurdi Information |
| | Language | English |
| 5 | Transition altitude | 4000 ft |
| 6 | Remarks | Nil |

VGIS AD 2.18 AIR TRAFFIC SERVICES COMMUNICATIONS FACILITIES

| Service designator | Call Sign | Frequency | Hours of operation | Remarks |
|----------------------------|---------------------|---------------------|--------------------|---------|
| 1 | 2 | 3 | 4 | 5 |
| Flight Information Service | Ishurdi Information | 122.9 MHz EM: A3 | HO | Nil |

VGIS AD 2.19 RADIO NAVIGATION AND LANDING AIDS

| Type of aid variation | Ident | Frequency | Hours of operation | Co-ordinates | Elevation of DME transmitting antenna | Remarks |
|-----------------------|-------|-----------|--------------------|----------------------------|---------------------------------------|-----------|
| 1 | 2 | 3 | 4 | 5 | 6 | 7 |
| NDB | IS | 350 KHz | HO | 240910.25 N 0890241.43E | ---- | EM: AO/A2 |
| | | | | | | |

VGSH AD 2.1 AERODROME LOCATION INDICATOR AND NAME

VGSH-SHAMSERNAGAR STOL PORT

VGSH AD 2.2 AERODROME GEOGRAPHICAL AND ADMINISTRATION DATA.

| | | | |
|---|--|---|---|
| 1 | ARP coordinates and site ad AD | 242355.84N 0915500.70E | ← |
| 2 | Distance and direction from city | 9NM South East of Moulavi Bazar | |
| 3 | AD elevation/reference temperature | 56 ft | |
| 4 | MAG VAR | 1° W | |
| 5 | AD administration, address, telephone, telefax, telex, AFS | Director (ATM) ATM Division, CAAB HQ(New) Kurmitola, Dhaka-1229 Telephone: +88-02-8901404 | ← |
| 6 | Types of traffic permitted IFR/VFR | IFR/VFR | |
| 7 | Remarks | NIL | |

VGSH AD 2.3 OPERATIONAL HOURS

Prior approval is required to use the aerodrome

VGSH AD 2.4 HANDLING SERVICES AND FACILITIES

NIL

VGSH AD 2.5 PASSENGER FACILITIES

NIL

VGSH AD 2-6 RESCUE AND FIRE FIGHTING SERVICES

2.6.1 Rescue and firefighting services is available, Responsibility of firefighting& Rescue provided by CAAB

VGSH AD 2.7 SEASONAL AVAILABILITY CLEARING

2.7.1 The airport is available for all seasons, Side strips become unusable during monsoon. There is no requirement for clearing.

VGSH AD 2.8 APRONS, TAXIWAYS AND CHECKLOCATIONS DATA

| | | |
|---|-------------------------------------|---|
| 1 | Apron surface and strength | Surface: Bituminous concrete Strength: PCN12/F |
| 2 | Taxiway width, surface and strength | Width : 23M Surface: Bituminous concrete Strength: PCN 12/F |
| 3 | ACL location and elevation | Not designated |
| 4 | Remarks | Nil |

VGSH AD 2.9 SURFACE MOVEMENT GUIDANCE AND CONTROL SYSTEM AND MARKING

| | | |
|---|--|---|
| 1 | Stand identification/taxiway guide lines/ Visual docking/parking guidance | Taxiing guidance signs at all intersection with TWY and RWY at all holding positions. Guidelines at apron: Nose-in guidance at aircraft stands |
| 2 | RWY and TWY marking and LGT | TWY marking aids : THR, centre line, RWY designator all runways TWY marking aids: TWY holding position, TWY centre line. |
| 3 | Stop bars | NIL |
| 4 | Remarks | NIL |

VGSH AD 2.10 AERODROME OBSTACLES

| 1 | 2 | | | |
|-----------------------|------------------|---------------|----------------------------------|-------------|
| In approach/TOFF area | In circling area | | | |
| | RWY effected | Obstacle type | Position | Marking LGT |
| | 17/35 | Tower 40FT | 300FT West of RWY Centre line | Nil |
| | 17/35 | Trees 50FT | 350FT West of RWY Centre line | Nil |

VGSH AD 2.11 METEOROLOGICAL INFORMATION PROVIDED

2.11.1 Shamsernagar Information will collect from the nearest aerodrome (VGSY), to be passed to aircraft when available.

VGSH AD 2.12 RUNWAY PHYSICAL CHARACTERISTICS

| Designator RWY NR | TRUE & MAG BRG | Dimensions of RWY (M) | Strength (PCN) and surface of RWY & SWY | | THR Coordi- nates | THR elevation (FT) | Slope of RWY- SWY |
|----------------------|--------------------------|--------------------------|--|----------|---------------------------|--------------------------|-------------------------|
| | | | RWY | SWY | | | |
| 1 | 2 | 3 | 4 | | 5 | 6 | 7 |
| 17 | | 1524X23 | Bituminous Concrete PCN12/F | Concrete | 242417.15N 0915458.26E | | |
| 35 | | 1524X23 | | | 242328.11N 0915503.87E | | |
| Designator RWY NR | SWY Dimensions (M) | CWY Dimensions (M) | Strip Dimensions (m) | | OFZ | Remarks | |
| | 8 | 9 | 10 | | 11 | 12 | |
| 17 | 76X30 | 305X153 | 1644X153 | | Within the CWY | NIL | |
| 35 | 76X30 | 305X153 | 1644X153 | | | | |

VG TJ AD 2.10 AERODROME OBSTACLES

| In approach/TOFF area | | | |
|-----------------------|-----------------------------|---|-----|
| Rwy effected | Obstacle type elevation | Position | LGT |
| 35 | Apartment Building 144 FT | East of extended centre line 1244 M FM THR RWY 35 | Yes |
| 35 | Bashundhara Building 159 FT | 1.7 KM on brg 166 ⁰ FM THR RWY-35 | Yes |
| 17 | Old LOS Mast 325 FT | 1 KM on brg 125 ⁰ FM THR RWY-17 | Yes |

| In circling area | | | | |
|------------------|--|---|--------------|---|
| RWY affected | Obstacle type | Position | Marking/ LGT | Remarks |
| 17/35 | Bricks structure (Dimension 1650X75FT) 6FT | 220 ft offset to the West side of RWY centre line | No | Tejgaon is adjacent to HazratShahjalalInternationalAirport (VGHS). All the Obstructions at/around VGHS will be considered as obstacles for Tejgaon (VG TJ). |
| 17/35 | Bricks structure(Spectrum Gallery) (Dimension 1000X60FT) 4FT | 220 ft offset to the West side of RWY centre line | No | |
| 17/35 | Bricks structure(Spectrum Gallery) (Dimension 900X60FT) 4FT | 220 ft offset to the West side of RWY centre line | No | |
| 17/35 | IDB Bhavan Antenna 325 FT | 1200 ft offset to theWest side of RWY centre line | Yes | |

VG TJ AD 2.11 METEOROLOGICAL INFORMATION PROVIDED

2.11.1 Crews may receive weather briefing at Met office located at BAF Base Bashar.

VG TJ AD 2.12 RUNWAY PHYSICAL CHARACTERISTICS

| RWY Designations | True / Mag BRG | Dimensions of RWY (m) | Strength (PCN) and surface of RWY & SWY | THR(Displaced) Coordinates | THR Elevation (FT) | Slope of RWY-SWY |
|------------------|-------------------|-----------------------|---|----------------------------|--------------------|------------------|
| | | | RWY SWY | | | |
| 1 | 2 | 3 | 4 | 5 | 6 | 7 |
| 17 | 166° T | 2622X30 | PCN40F/C/Y/T Bituminous Concrete | 234603.20N 0902309.71E | 24 ft | 0.06% |
| 35 | 346° T | 2622X30 | PCN40F/C/Y/T Bituminous Concrete | 234724.49N 0902245.06E | 24 ft | 0.06% |
| RWY Designations | SWY Dimensions(M) | CWY Dimensions(m) | Strip Dimensions (m) | OFZ | Remarks | |
| | 8 | 9 | 10 | 11 | 12 | |
| 17 | 144X30 | 208X50 | 2834X150 | Within the CWY | Nil | |
| 35 | 68X30 | 268X50 | 2834X150 | Within the CWY | Nil | |

VG TJ AD 2.13 DECLARED DISTANCES

| RWY | TORA (M) | TODA (M) | ASDA(M) | LDA (M) | Remarks |
|-----|----------|----------|---------|---------|---------|
| 1 | 2 | 3 | 4 | 5 | 6 |
| 17 | 2622 | 2830 | 2766 | 2622 | NIL |
| 35 | 2622 | 2890 | 2690 | 2622 | NIL |

VG TJ AD 2.14 APPROACH AND RUNWAY LIGHTING

NIL

VG TJ AD 2.15 OTHER LIGHTING, SECONDARY POWER SUPPLY.

NIL

VG TJ AD 2.16 HELICOPTER LANDING AREA

As directed by ATC

VG TJ AD 2.17 AIRTRAFFIC SERVICES, AIRSPACE

| | | |
|---|-------------------------|---|
| 1 | Designation | Tejgaon Tower |
| | Lateral limits | A portion of the Dhaka CTR laterally bounded by a closed line obtained by joining A(234116.57N, 0902427.57E) to B(232428.23N, 0902223.48E) then along an arc of radius 25NM from Dhaka VOR upto C(235552.71N), 0895824.17E) then to D(234920.99N), 0902209.78E) there after along the center line of the RWY to A(234116.57N, 0902427.57E). |
| 2 | Vertical limits | 1000FT (AMSL) |
| 3 | Airspace Classification | C |
| 4 | Call Sign of ATC Unit | Tejgaon Tower |
| | Language | English |
| 5 | Transition Altitude | 4000 FT |
| 6 | Hours of Applicability | 0100UTC to Sunset |
| 7 | Remarks | Nil. |

| | | |
|---|-------------------------|--|
| 1 | Designation | ATZ |
| | Lateral limits | 2 NM-To the North from threshold RWY17, 5 NM-To the South & West (semicircular from center of runway) |
| 2 | Vertical limits | 1000FT (AMSL) |
| 3 | Airspace Classification | C |
| 4 | Call Sign of ATC Unit | Tejgaon Tower |
| | Language | English |
| 5 | Transition Altitude | 4000 FT |
| 6 | Hours of Applicability | 0100 UTC to Sunset |
| 7 | Remarks | Nil. |

VG TJ AD 2.18 AIR TRAFFIC SERVICES COMMUNICATION FACILITIES

| | | |
|---|--------------------|---|
| 1 | Service designator | Air Traffic control service |
| 2 | Call sign | Tejgaon Tower |
| 3 | Frequency | 123.0MHz (PRY) |
| | | 122.9 MHz (SRY) |
| 4 | Hours of operation | 0100 UTC to sunset |
| 5 | Remarks | 1) Service provided by Bangladesh Air force |
| | | 2) HF/RT 6826 KHz for coordination. |