

AD 1.4 GROUPING OF AERODROMES

1. The criteria applied by Bangladesh in grouping aerodromes for the provision of information in this AIP is as follows:

1.1 Primary/Major international aerodromes

1.1.1 The aerodrome of entry and departure for international air traffic, where all formalities concerning customs, immigration, health, animal and plant quarantine and similar procedures are carried out and where air traffic services are available on a regular basis.

1.2 Secondary/Other international aerodrome

1.2.1 Another aerodrome available for the entry of departure of international air traffic, where the formalities concerning customs, immigration, health and similar procedures and air traffic services are made available, on a restricted basis, to flights with prior approval only.

1.3 National aerodrome

1.3.1 An aerodrome available only for domestic air traffic.

AD 1.5 Status of certification of aerodromes

A list of aerodromes in Bangladesh including the status of certification, including

- 1) aerodrome name and ICAO location indicator,
- 2) date if applicable, validity of certificate and remarks if any.

List of international aerodromes:

Sl Nr	Name of aerodrome	ICAO Location indicator	Date of certificate issue /renewal date	Certificate validity		Remark
				From	To	
1	Hazrat Shahjalal International Airport, Dhaka	VGHS	27/10/2016	27/10/2016	26/10/2018	Renewal
2	Shah Amanat International Airport, Chittagong	VGEG	30/10/2015	31/10/2015	30/10/2017	Renewal
3	Osmani International Airport, Sylhet	VGSY	Nil	Nil	Nil	

INTENTIONALLY LEFT BLANK

VGHS AD 2.6 RESCUE AND FIRE FIGHTING SERVICES

1.	AD Category for fire fighting	Required Category 9, Available Category 9.																		
2.	Rescue equipment Avb1	Adequately provided as recommended by ICAO																		
3.	Disabled Aircraft Removal	<table border="1"> <thead> <tr> <th>Description</th> <th>Number/Set</th> </tr> </thead> <tbody> <tr> <td>i) Platform</td> <td>4(four) nos. capacity 50(fifty) tons each</td> </tr> <tr> <td>ii) Malbro Truck</td> <td>2(Two) nos. capacity 3 (three) tons each.</td> </tr> <tr> <td>iii) Engine Air compressor</td> <td>4 (four) tons; (150 P.S.I)</td> </tr> <tr> <td>iv) Air distribution</td> <td>8(eight)sets (each Console set contain 12 Units) 8(eight) sets, (each set contain 11 bags).</td> </tr> <tr> <td>v) Pneumatic Elevator</td> <td>Capacity 50 (fifty) tons each set.</td> </tr> <tr> <td>vi) Valise (body stamp)</td> <td>4 (four)nos.</td> </tr> <tr> <td>vii) Centrifugal Fan</td> <td>1(one) no.</td> </tr> <tr> <td>viii) Tethering</td> <td>required nos.</td> </tr> </tbody> </table> <p>Note: 1) Serviceability of the items to be checked up before use. 2) Charges for use of salvage equipments will be fixed on the extent of use of the various equipments.</p>	Description	Number/Set	i) Platform	4(four) nos. capacity 50(fifty) tons each	ii) Malbro Truck	2(Two) nos. capacity 3 (three) tons each.	iii) Engine Air compressor	4 (four) tons; (150 P.S.I)	iv) Air distribution	8(eight)sets (each Console set contain 12 Units) 8(eight) sets, (each set contain 11 bags).	v) Pneumatic Elevator	Capacity 50 (fifty) tons each set.	vi) Valise (body stamp)	4 (four)nos.	vii) Centrifugal Fan	1(one) no.	viii) Tethering	required nos.
Description	Number/Set																			
i) Platform	4(four) nos. capacity 50(fifty) tons each																			
ii) Malbro Truck	2(Two) nos. capacity 3 (three) tons each.																			
iii) Engine Air compressor	4 (four) tons; (150 P.S.I)																			
iv) Air distribution	8(eight)sets (each Console set contain 12 Units) 8(eight) sets, (each set contain 11 bags).																			
v) Pneumatic Elevator	Capacity 50 (fifty) tons each set.																			
vi) Valise (body stamp)	4 (four)nos.																			
vii) Centrifugal Fan	1(one) no.																			
viii) Tethering	required nos.																			
4.	Remarks	Nil																		

VGHS AD 2.7 SEASONAL AVAILABILITY CLEARING

2.7.1 The airport is available for all seasons. Side strips become unusable during monsoon. There is no requirement for clearing.

VGHS AD 2.8 APRONS, TAXIWAYS AND CHECK LOCATIONS DATA

1.	Apron Surface and Strength	Main Apron	Surface: Rigid pavement Strength: PCN 70/R/B/W/T
		Cargo Apron	Surface: Rigid pavement Strength: PCN 70/R/B/W/T
		VVIP Apron	Surface: Rigid pavement Strength: PCN 70/R/B/W/T
		Cargo Village Apron	Surface: Rigid pavement Strength: PCN 59/R/B/W/U
2.	Taxiway Width, Surface and Strength	North Taxiway	Width: 23m & Shoulder 10.5m both side of TWY Surface: Flexible pavement Strength: PCN 192/F/C/W/T
		South Taxiway	Width: 23m & Shoulder 10.5m both side of TWY Surface: Flexible pavement Strength: PCN 162/F/B/W/T
		High speed Taxiway	Width: 23m & Shoulder 10.5m both side of TWY Surface: Flexible pavement Strength: PCN 209/F/C/W/T
3.	ACL location and elevation	Not designated	
4.	INS checkpoints	Nil	
5.	Remarks	Nil	

VGHS AD 2.9 SURFACE MOVEMENT GUIDANCE AND CONTROL SYSTEM AND MARKING

1	<p>Use of aircraft stand ID signs, TWY guidelines and visual docking/parking guidance system of aircraft stands; Boarding Bridges:</p> <p>Tow bar:</p>	<p>Taxiing guidance signs at all intersections with TWY and RWY at all holding positions, guidelines at apron, nose-in guidance at aircraft stands. 8(eight) boarding bridges are available at stands nr. X, 1, 2, 3, 4, 5, 6 & 16 for passenger's use and can accommodate acft fm A320 up to B747 in size. Due to parking and manoeuvring problem, all ACFT with wing-span more than 80ft operating to/fm Hazrat Shahjalal International Airport are required to have tow bar for pushback.</p>
2.	RWY and TWY markings and LGT	<p>RWY: 14/32 RWY marking aids: THR, TDZ, Centre line, Fixed distance, Side strip, RWY designator all runways. RWY EDGE LGT: White, omni-directional with intensity 3%, 10%, 30%, 80% and 100%; 60 M apart. THR light: Green lights, supplemented by green wing-bar. END LGT: RED RWY Centre line LGT: AVBL; 30M apart. TWY marking aids: AVBL on TWY holding position, TWY centre line at all taxiways. TWY EDGE LGT: Not AVBL. TWY Centre Line LGT: AVBL at all TWYs.</p>
3	Stop bars	TWY Stop bar LGT: Avbl at all TWY holding position.
4.	Remarks	NIL

VGHS AD 2.10 AERODROME OBSTACLES

In approach/TKOF areas	In circling area and at AD
<p>Consult AOC type-A, Hazrat Shahjalal Intl. Page VGHS AD 2-17</p>	<p>Obstruction in the circling area and aerodrome are shown on the instrument approach chart and page VGHS AD 2-11. Obstructions are provided with day marking and obstruction lights where applicable.</p>

VGHS AD 2.11 METEOROLOGICAL INFORMATION PROVIDED

1	Associated Met office	Main Met Office (MMO), Hazrat Shahjalal Intl. Airport (VGHS)
2	Hours of service	H24
3	Office responsible for TAF preparation Periods of validity	MMO, Hazrat Shahjalal Intl. (VGHS) 6, 12
4	Type of landing forecast Interval of issuance	TREND
5	Briefing/ consultation provide	P.D.T
6	Flight documentation Languages used	C.PL English
7	Charts and other information available for briefing or consultation	S,U
8	Supplementary equipment available for providing information	WXR
9	ATS units provided with information	Dhaka ACC/FIC;APP;TWR
10	Additional information	Tel: 880-2-8901013 (Met office)

VGHS AD 2.12 RUNWAY PHYSICAL CHARACTERISTICS

Designator RWY NR	TRUE & MAG BRG	Dimensions of RWY (m)	Strength (PCN) and surface of RWY & SWY	THR Co-ordinates	THR ELEV and highest ELEV of TDZ (FT)	Slope of RWY – SWY
1	2	3	4	5	6	7
14	144° TRUE	3200x45	116/F/C/W/T Asphalt concrete	235118.11N 0902318.62E	27	Nil
32	324° TRUE	3200x45	116/F/C/W/T Asphalt concrete	234954.00N 0902425.40E	27	Nil
RESA						
Designator RWY NR		RESA		STRIP		Remarks
8		9		10		11
14		90 X 90 m		3710 X 300		Nil
32		90 X 90 m		3710 X 300		
CWY						
Designator RWY NR	SWY Dimensions(m)	CWY Dimensions(m)	OFZ		Remarks	
12	13	14	15		16	
14	240x45	425x150	Within the CWY		25 ft (8M) brick soiling with bitumen carpeting shoulder at both sides of RWY.	
32	150x45	300x150				

VGHS AD 2.13 DECLARED DISTANCES

1	2	3	4	5	6	Remarks
RWY Designator	TORA(m)	TODA(m)	ASDA(m)	LDA(m)	RESA(m)	Due to Length reduction of SWY
14	3200	3625	3440	3200	90	
32	3200	3500	3350	3200	90	

VGHS AD 2-14 APPROACH AND RUNWAY LIGHTING

RWY Designator	APCH LGT Type INTSTY	THR LGT Colour WBAR	PAPI (MEHT)	TDZ LGT LEN	RWY Centre Line LGT	RWY edge LGT LEN, Spacing, colour INTSTY	RWY END LGT Colour WBAR	SWY LGT	Remarks
1	2	3	4	5	6	7	8	9	10
14	Precision approach CAT-I Lighting system, Simple approach lighting system and sequenced flashing lights Supplementary Approach light	Green Supplemented by Green Wing bar	PAPI 3 ⁰ MEHT on slope (67FT)	Avbl	Avbl	60m apart While omnidirectional with intensity 1%, 3%, 10%, 30%, 100%	Red: unidirectional Green: omnidirectional	avbl	Nil
32	Simple approach Lighting system	Green supplemented by Green Wing bar	PAPI 3 ⁰ MEHT on slope (65FT)	Nil	Avbl	60m apart While omnidirectional with intensity 1%, 3%, 10%, 30%, 100%	Red: unidirectional Green: omnidirectional	avbl	Nil

VGHS AD 2.15 OTHER LIGHTING, SECONDARY POWER SUPPLY

1	ABN/IBN Location, Characteristics and hours of operation	ABN:235057.20N 0902413.24E(over control TWR) Altn W/G every 5 sec (hours: HN & VIS< 5 Km) W500 G75
2	LDI location and LGT Anemometer location and LGT	Nil Cup anemometer over control TWR, windsocks end of RWY 14/32 and in the middle of RWY.
3	TWY edge and centre line lighting	Edge: Nil Centre Line: AVBL for all TWYs
4	Secondary power supply/switch over time.	During main power supply failure, Automatic standby generator power supply available for Approach, RWY, TWY & apron lighting within 15 seconds.
5	Remarks	Apron lights: High intensity flood lights, blue edge lights.

AIP BANGLADESH

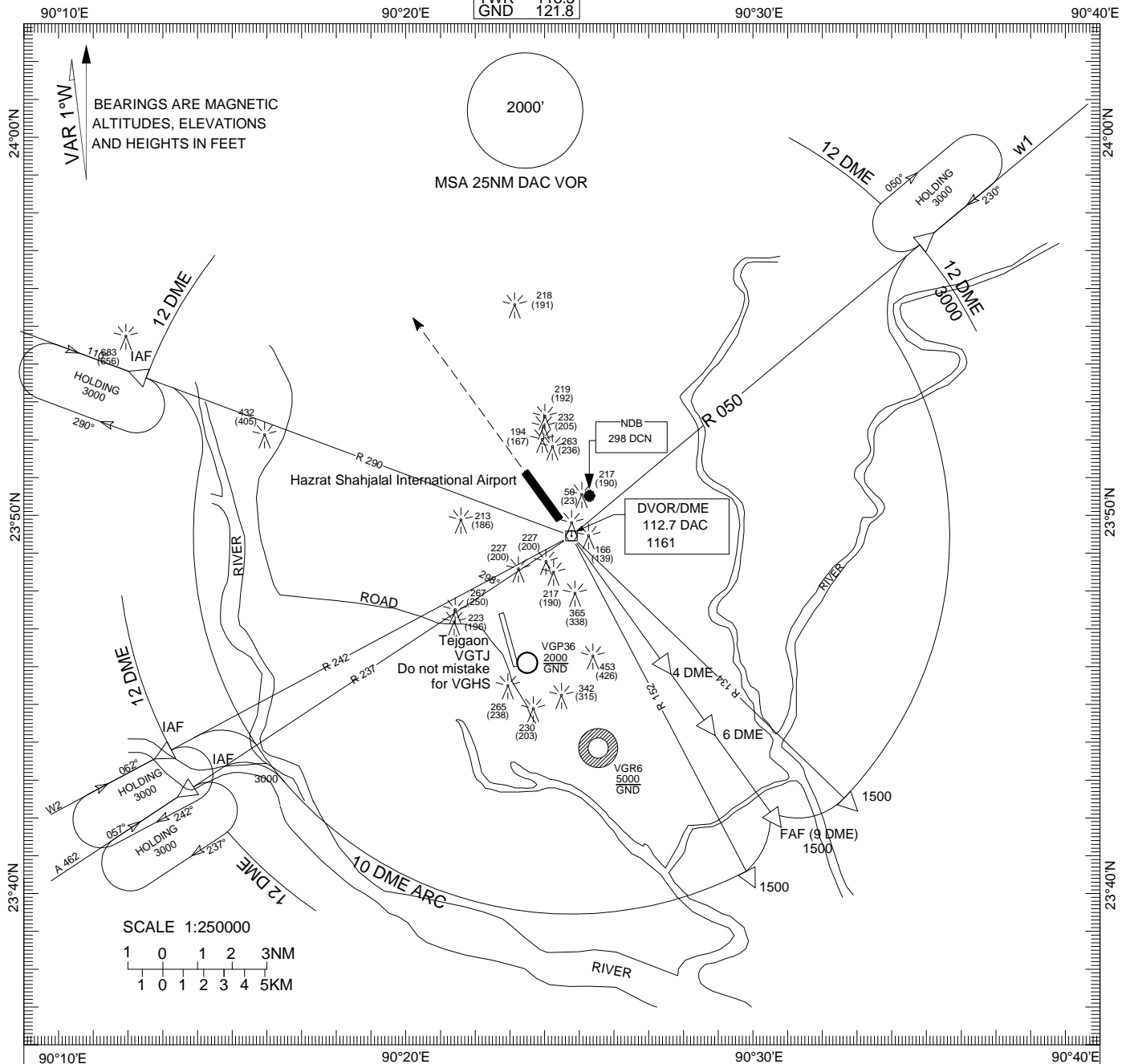
VGHS AD 2-41
08 DEC 2016

INSTRUMENT
APPROACH CHART
CHART-ICAO

ELEV 27 FT
HEIGHTS RELATED
TO AD ELEV

ATIS 127.4
ACC(U) 125.7
ACC(L) 126.7
APP 121.3
TWR 118.3
GND 121.8

DHAKA, BANGLADESH
HAZRAT SHAHJALAL INTERNATIONAL AIRPORT
VOR/DME-ARC RWY 32



TRANSITION LEVEL FL 060
TRANSITION ALTITUDE 4000FT

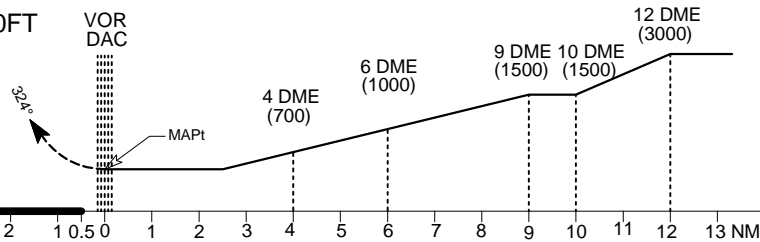
MISSED APPROACH

CLIMB TO 2000FT/610M ON
TRACK 324° CONTACT ATC
FOR FURTHER INSTRUCTION

MET MINIMA
VIS 2800m

CATEGORY OF ACFT

OCA



CATEGORY OF ACFT	A	B	C	D
OCA	480	480	480	480

VGSY AD 2.16 HELICOPTER LANDING AREA

As directed by ATC

VGSY AD 2.17 AIR TRAFFIC SERVICES AIRSPACE

1	Designation	Aerodrome Traffic Zone (ATZ)
	Lateral limits	ATZ is oval shaped area joining outer tangents of 5 NM (9KM) radius circles centered at the RWY centre and both ends of RWY .
2	Vertical limits	4000 ft (AMSL)
3	Airspace	D
4	Unit	Sylhet Tower
	Language	English
5	Transition altitude	4000 ft
6	Remarks	Nil

VGSY AD 2.18 AIR TRAFFIC SERVICES COMMUNICATIONS FACILITIES

Service designator	Call Sign	Frequency	Hours of operation	Remarks
1	2	3	4	5
Aerodrome Control Service	Sylhet TWR	122.9 MHz (main) 122.5 MHz (sdby)	HO	NIL

VGSY AD 2.19 RADIO NAVIGATION AND LANDING AIDS

Type of aid Variation	Ident	Frequency	Operation hours	Coordinates	Height (Elev) of Nav aids transmitting antenna (ft)	Remarks
D/VOR	SYT	116.4 MHz	HO	245747.70 N 0915143.23E	40 (90) ft	
DME	SYT	1198 MHz	HO	245747.70 N 0915143.23E	40 (90)ft	Collocated with DVOR
NDB	SY	372 KHz	HO	245719.74 N 0915220.64E	60 (110)ft	
ILS/LLZ-11	SYL	111.5 MHz	HO	245726.82 N 0915254.96E	15 (65)ft	
ILS/GP-11	-	332.9 MHz	HO	245802.16N 0915111.82 E	50 (100) ft	
ILS/DME-11	-	1013 MHz	HO	245801.86N 0915112.18E	15 (65) ft	Collocated with GP

VGSY AD 2.20 LOCAL TRAFFIC REGULATIONS

Prior approval to be obtained from ATC.

VGSY AD 2.21 NOISE ABATEMENT PROCEDURES

NIL

VGSY AD 2.22 FLIGHT PROCEDURES

INTENTIONALLY BLANK

VGSY AD 2.23 ADDITIONAL INFORMATION

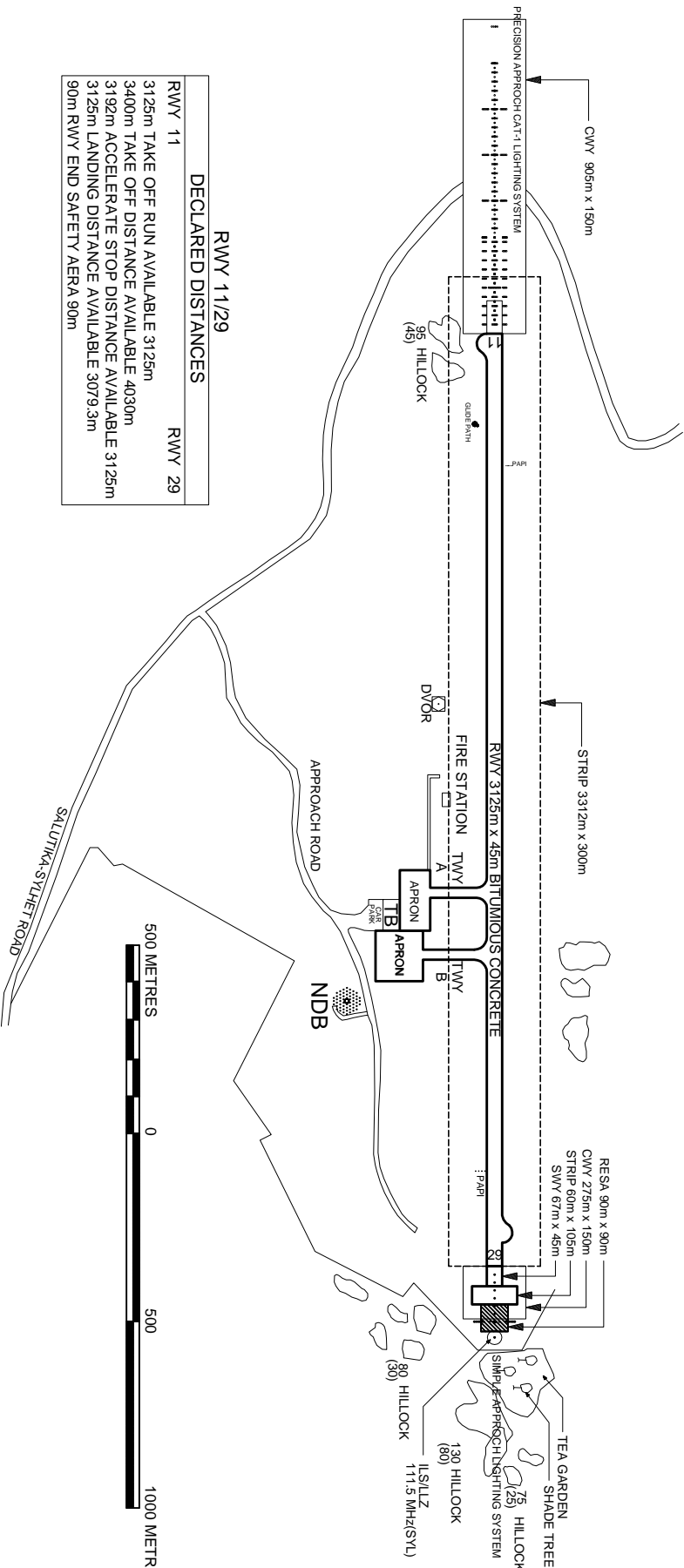
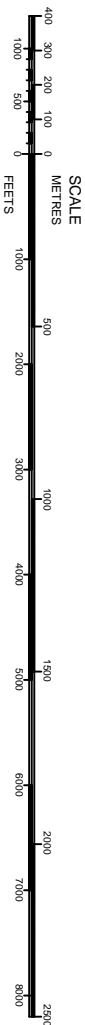
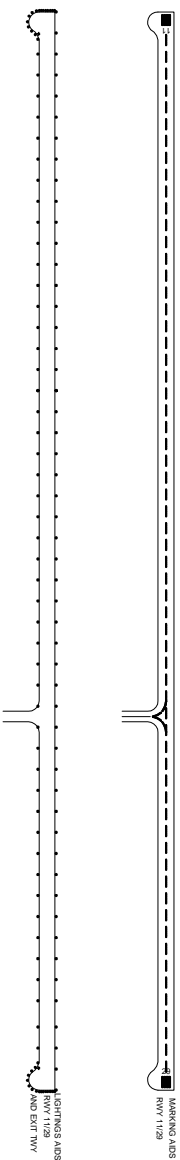
NIL

VGSY AD 2.24 CHARTS RELATED TO OSMANI INT'L AIRPORT, SYLHET

ICAO CHARTS		
	CHART TYPE	PAGE NR. (VGSY)
1	AERODROME CHART	AD 2-9
2	PARKING CHART	AD 2-10
3	INSTRUMENT APPROACH CHART	AD 2-11 to AD 2-21

INTENTIONALLY LEFT BLANK

MAGNETIC VARIATION 1° W



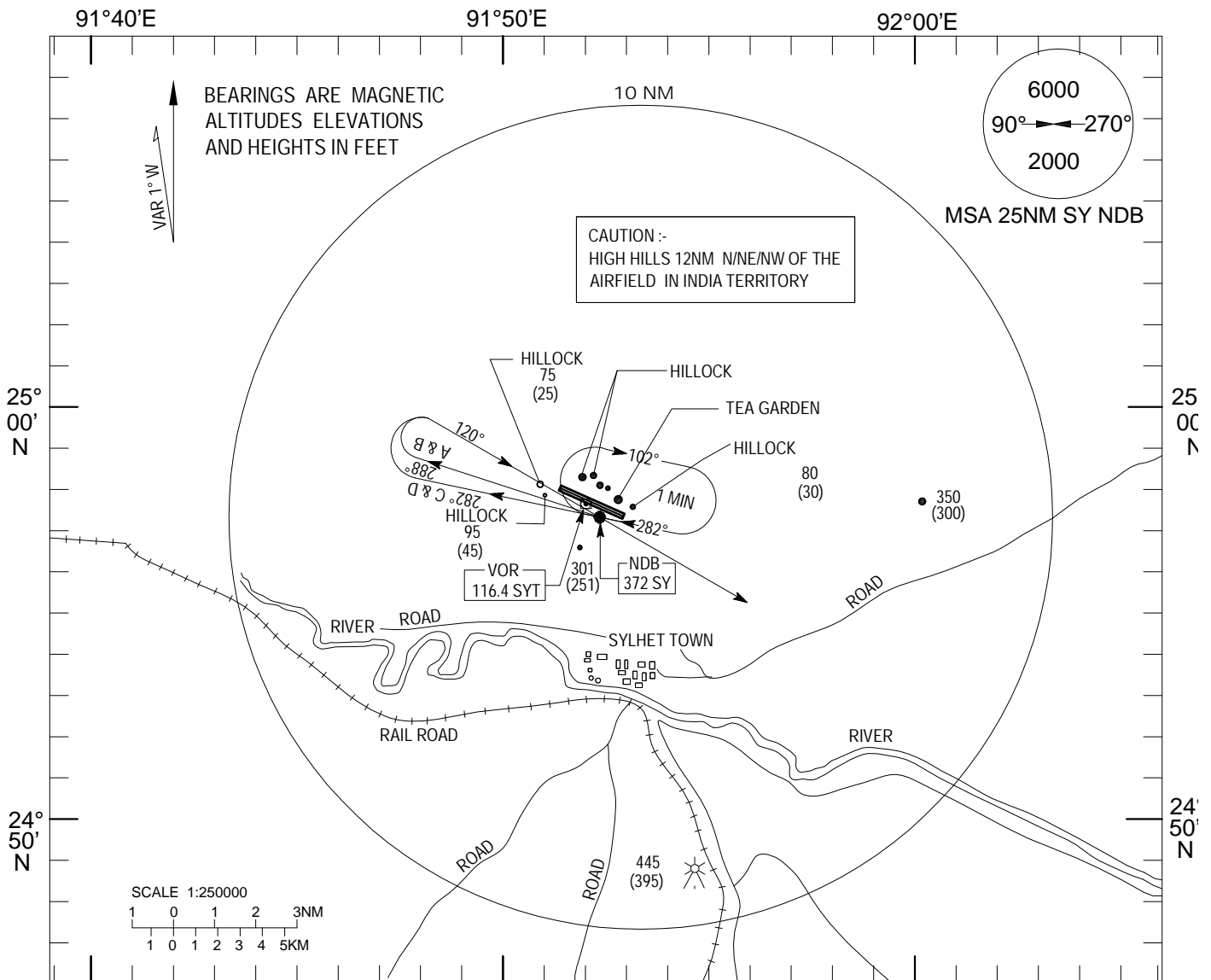
RWY 11/29	
DECLARED DISTANCES	
RWY 11	RWY 29
3125m TAKE OFF RUN AVAILABLE 3125m	
3400m TAKE OFF DISTANCE AVAILABLE 4030m	
3192m ACCELERATE STOP DISTANCE AVAILABLE 3125m	
3125m LANDING DISTANCE AVAILABLE 3079.3m	
90m RWY END SAFETY AERA 90m	



INSTRUMENT APPROACH
ELEV 50FT
HEIGHTS RELATED TO AD ELEV

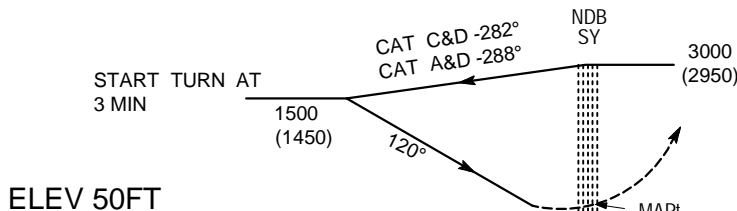
TWR 122.9(PRI)
122.5(Stand by)

SYLHET, BANGLADESH
OSMANI INTERNATIONAL
NDB RWY 11



TRANSITION LEVEL FL 060
TRANSITION ALTITUDE 4000FT

MISSED APPROACH
CLIMB TO 2000FT / 610m ON
TRACK 120° CONTACT TWR
FOR FURTHER INSTRUCTION



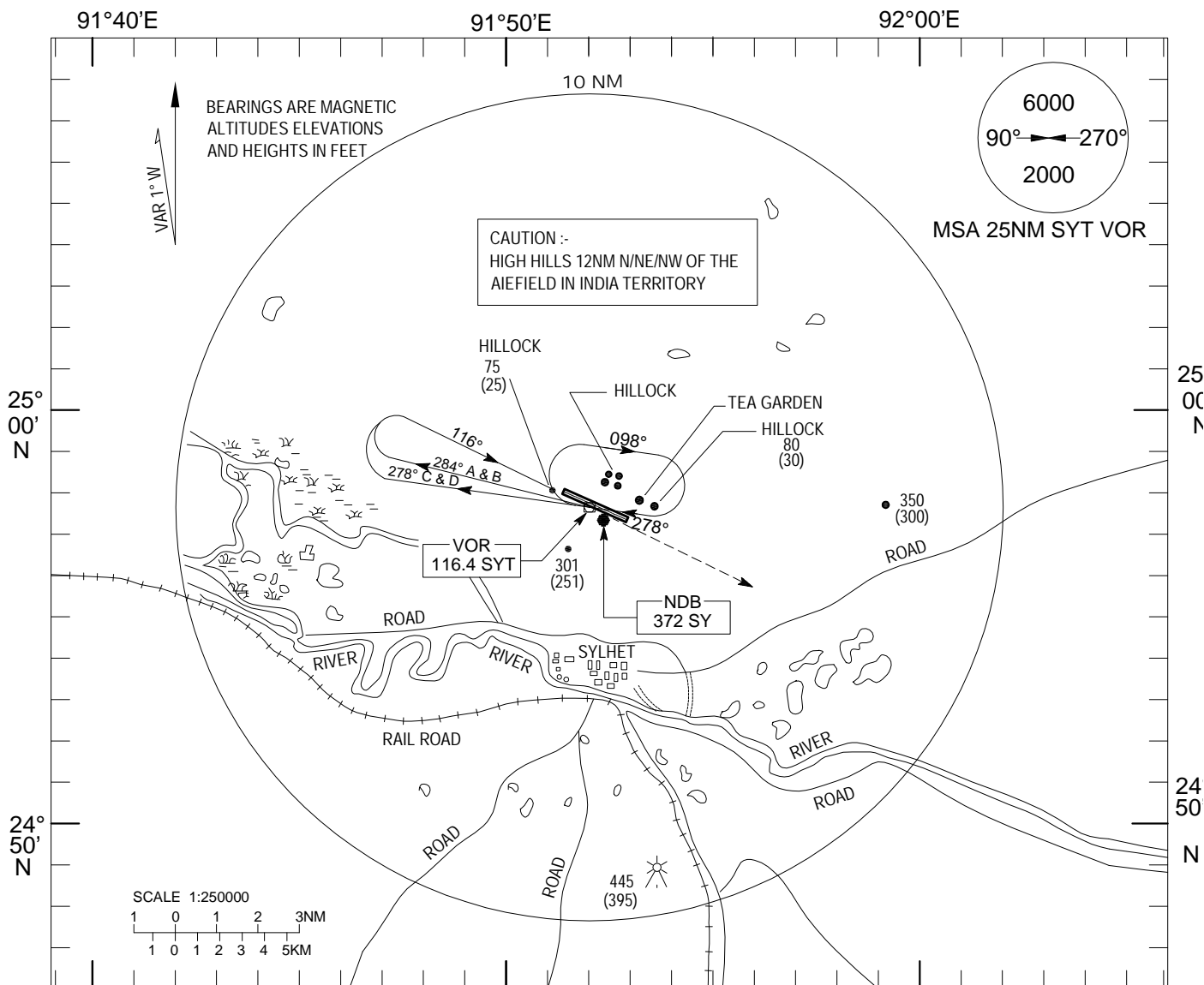
MET MINIMA
VIS 2800 M

CATEGORY OF ACFT		A	B	C	D
OCA		450	450	500	500
SPEED	KNOTS	90	120	150	180

INSTRUMENT ELEV 50FT
APPROACH HEIGHTS RELATED
CHART- ICAO TO AD ELEV

TWR 122.9(PRI)
122.5(Stand by)

SYLHET, BANGLADESH
OSMANI INTERNATIONAL
VOR RWY 11

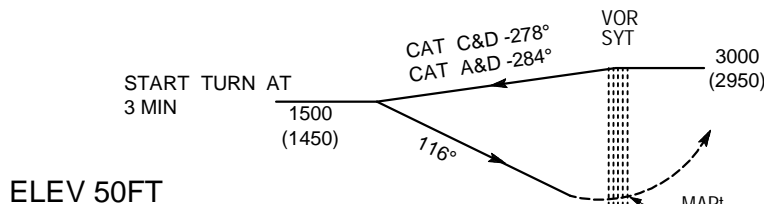


91°40'E 91°50'E 92°00'E

TRANSITION LEVEL FL 060
TRANSITION ALTITUDE 4000FT

MISSED APPROACH

CLIMB TO 2000FT / 610m ON
TRACK 116° CONTACT ATC
FOR FURTHER INSTRUCTION



ELEV 50FT

MET MINIMA
VIS 2800 M

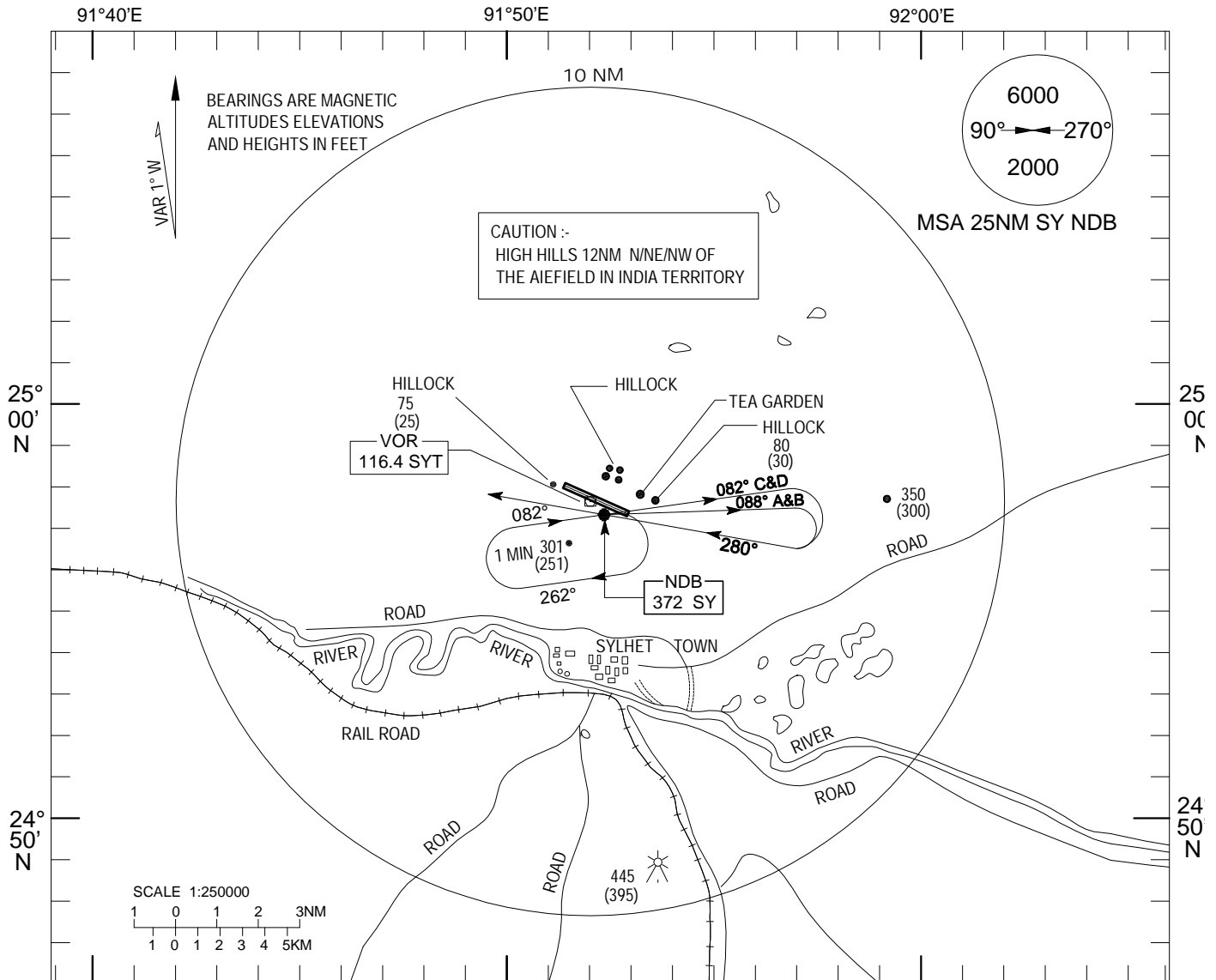
5 4 3 2 1 0 1 2 3 4 5 NM

CATEGORY OF ACFT		A	B	C	D
OCA		450	450	500	500
SPEED	KNOTS	90	120	150	180

INSTRUMENT APPROACH
ELEV 50FT
HEIGHTS RELATED
TO AD ELEV

TWR 122.9(PRI)
122.5(Stand by)

SYLHET, BANGLADESH
OSMANI INTERNATIONAL
NDB RWY 29

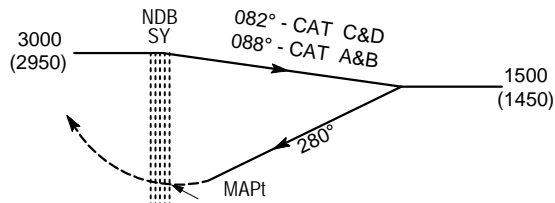


91°40'E 91°50'E 92°00'E

TRANSITION LEVEL FL 060
TRANSITION ALTITUDE 4000FT

MISSED APPROACH

CLIMB TO 2000FT / 610m ON
TRACK 280° AND CONTACT ATC
FOR FURTHER INSTRUCTION



START TURN AT
CAT A&B : 3 MIN
CAT C&D : 2 MIN

ELEV 50FT

MET MINIMA
VIS 2800 m

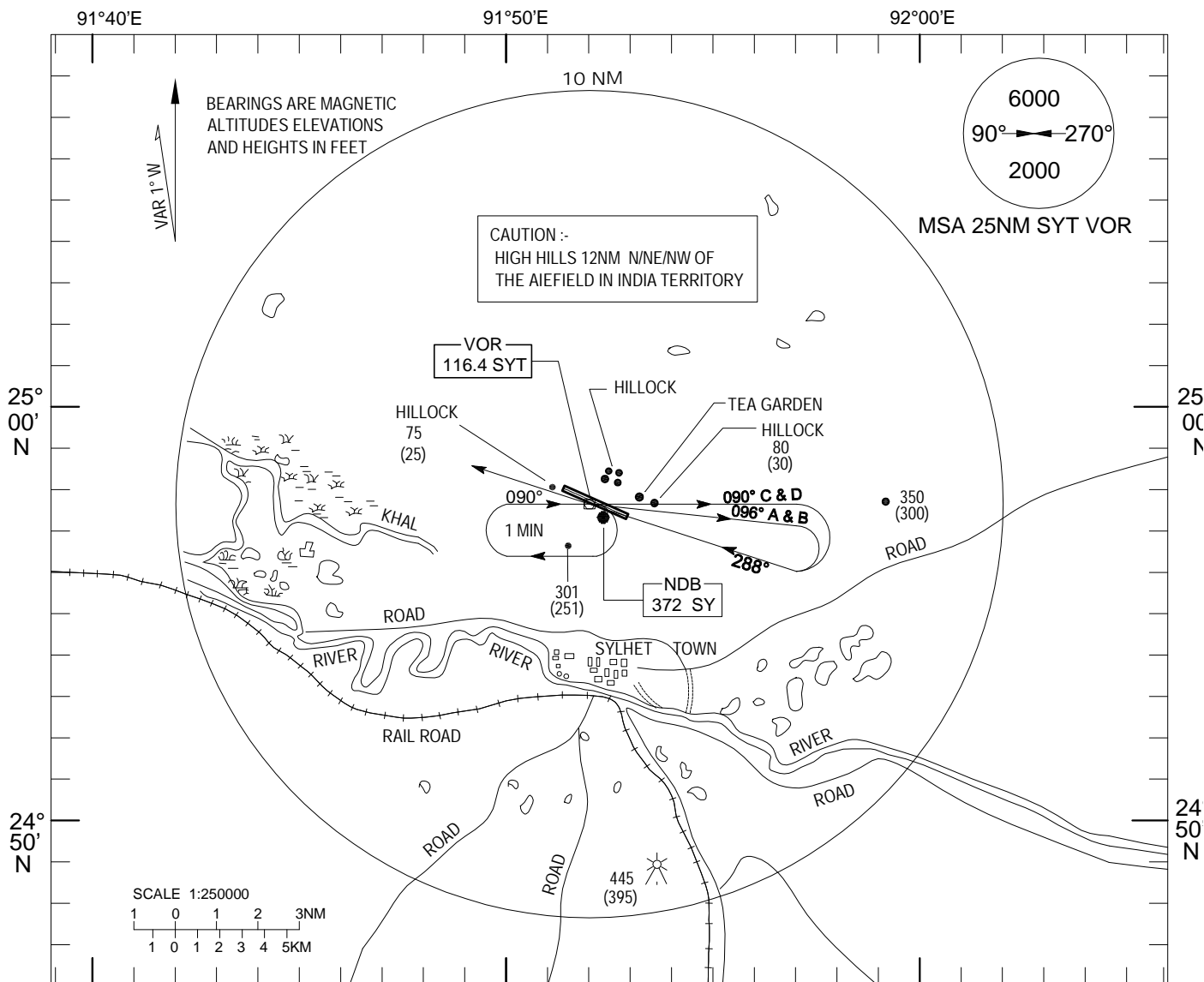
5 4 3 2 1 0 1 2 3 4 5 NM

CATEGORY OF ACFT		A	B	C	D
OCA		450	450	500	500
SPEED	KNOTS	90	120	150	180

INSTRUMENT ELEV 50FT
APPROACH HEIGHTS RELATED
CHART- ICAO TO AD ELEV

TWR 122.9(PRI)
122.5(Stand by)

SYLHET, BANGLADESH
OSMANI INTERNATIONAL
VOR RWY 29

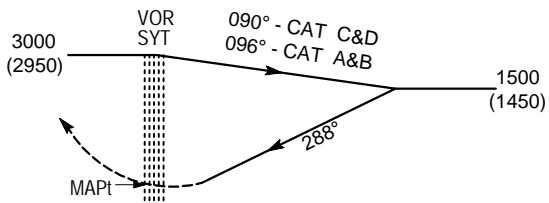


91°40'E 91°50'E 92°00'E

TRANSITION LEVEL FL 060
TRANSITION ALTITUDE 4000FT

MISSED APPROACH

CLIMB TO 2000FT / 610m ON
TRACK 288° AND CONTACT ATC
FOR FURTHER INSTRUCTION



START TURN AT
CAT A&B : 3 MIN
CAT C&D : 2 MIN

ELEV 50FT

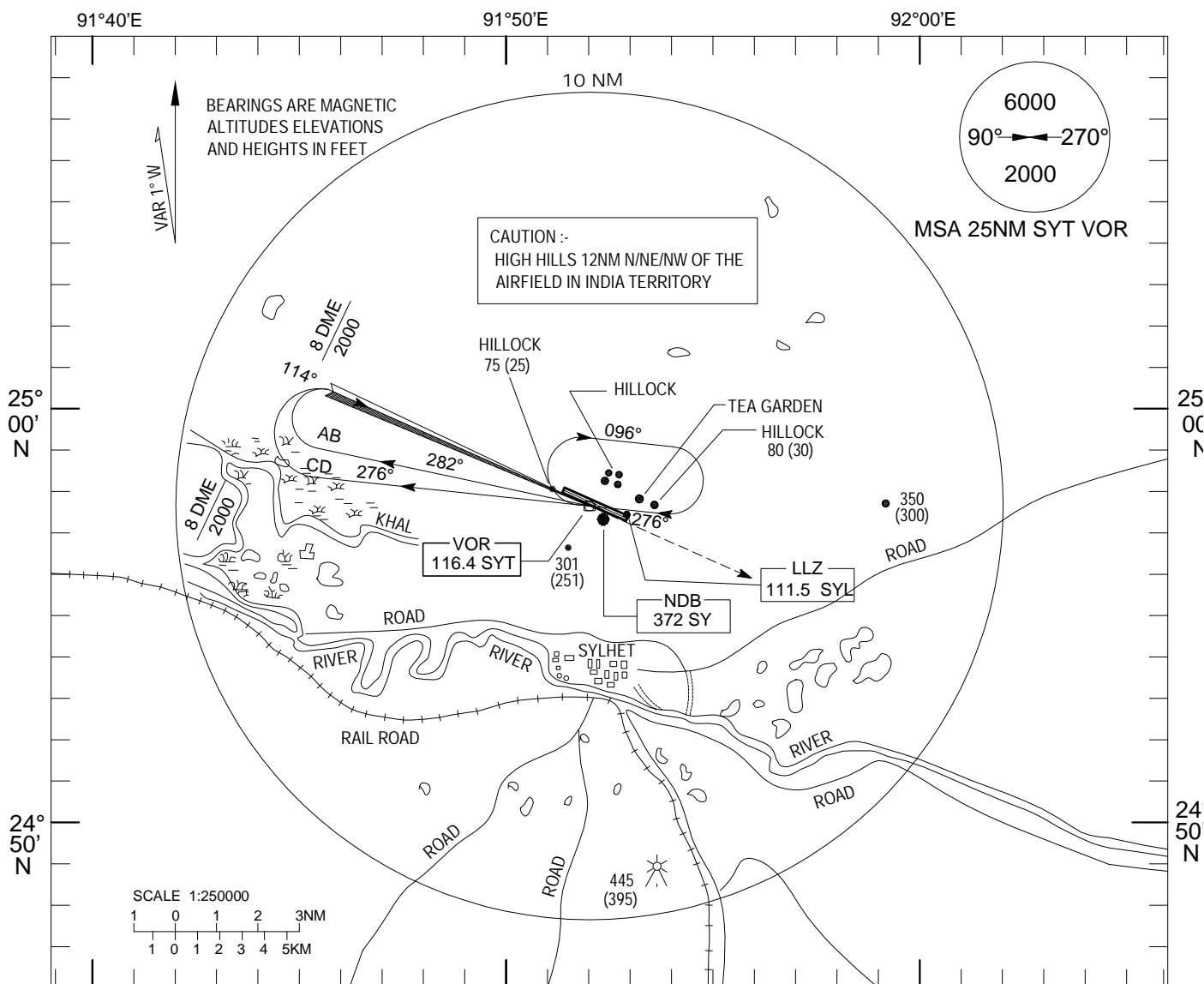
MET MINIMA VIS 2800 m	5 4 3 2 1 0 1 2 3 4 5 NM				
--------------------------	--------------------------	--	--	--	--

CATEGORY OF ACFT		A	B	C	D
OCA		450	450	500	500
SPEED	KNOTS	90	120	150	180

INSTRUMENT APPROACH CHART- ICAO
ELEV 50FT
HEIHGTS RELATED TO AD ELEV

TWR 122.9(PRI)
122.5(Stand by)

SYLHET, BANGLADESH
OSMANI INTERNATIONAL
VOR/ILS/DME RWY 11

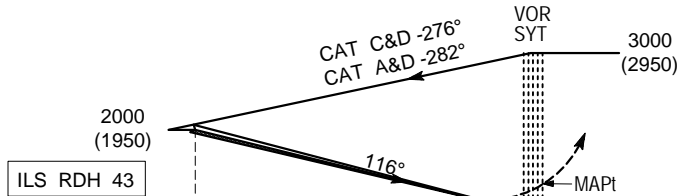


91°40'E 91°50'E 92°00'E

TRANSITION LEVEL FL 060
TRANSITION ALTITUDE 4000FT

MISSED APPROACH

CLIMB TO 2000FT / 610m ON
TRACK 114° CONTACT ATC
FOR FURTHER INSTRUCTION



MET MINIMA VIS 2800 M

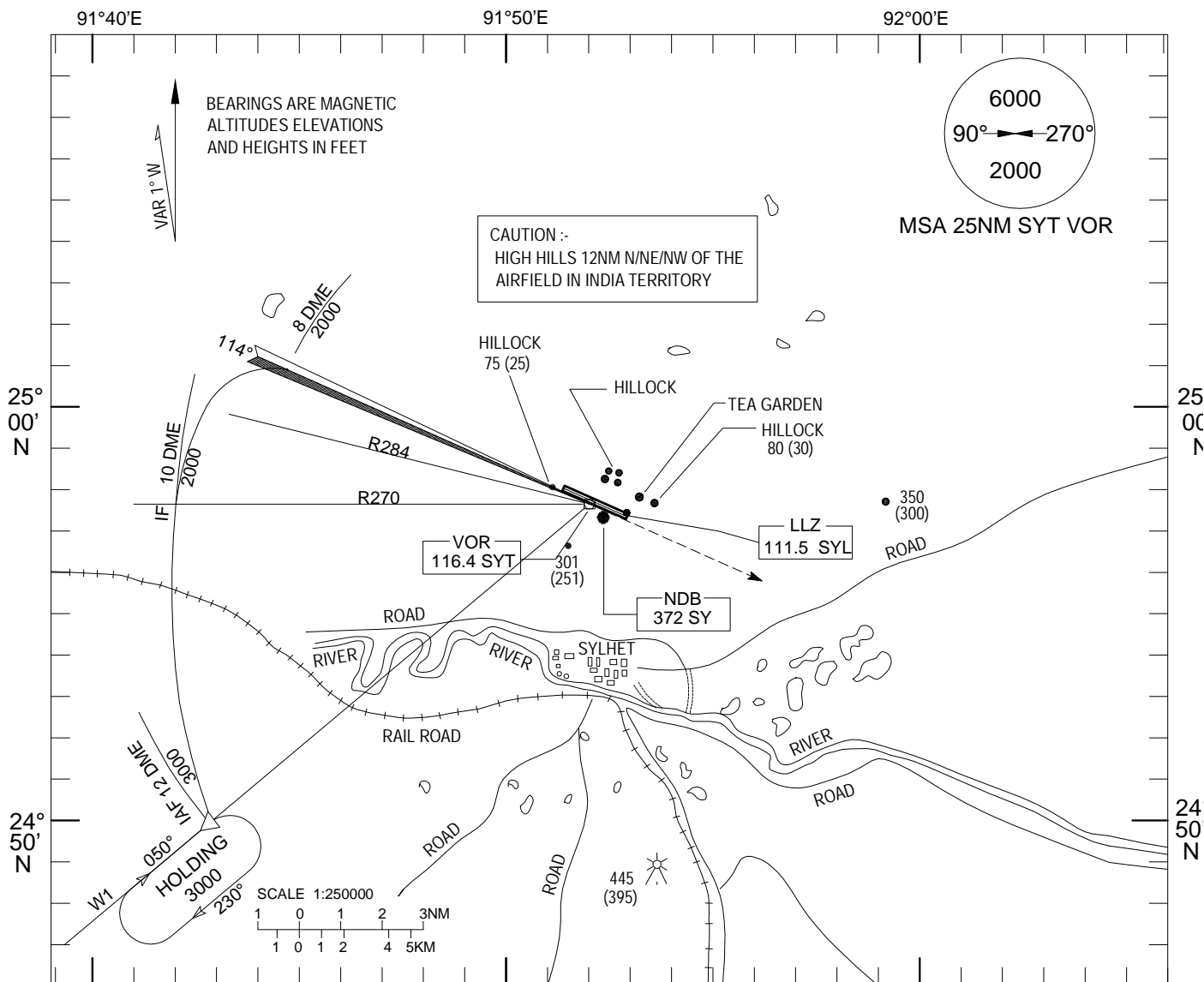
7 6 5 4 3 2 1 .5 0 1 2 3 4 5 NM

CATEGORY OF ACFT		A	B	C	D	CAT			
OCA	FULL	230	240	250	260	A B C D			
	GP OUT	350	350	350	350	90 120 150 260			
DISTANCE	6 DME 5 DME	4DME	3DME	2 DME	1 DME	RATE OF DESCENT/GS FT/MIN			
						480 635 795 956			
ALTITUDE	2000 1685	1366	1048	730	411	FAF TO THR11 MIN:S			
						3:54 2:55 2:20 1:57			
(HEIGHT)	(1950) (1635)	(1316)	(998)	(680)	(361)	MET MINIMA (m)			
						FULL VIS: 800m, RVR: 800m			
						ALS OUT VIS: 1400m			
						GP OUT 2000m(CAT A,B) & 2800m(CAT C,D)			

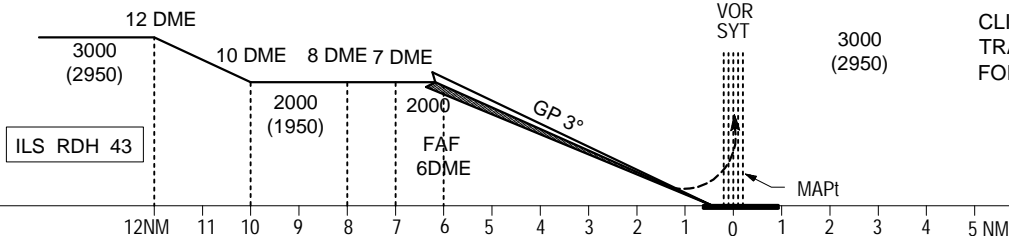
INSTRUMENT ELEV 50FT
APPROACH HEIGHTS RELATED
CHART- ICAO TO AD ELEV

TWR 122.9(PRI)
122.5(Stand by)

SYLHET, BANGLADESH
OSMANI INTERNATIONAL
VOR/ILS/DME-ARC RWY 11



TRANSITION LEVEL FL 060
TRANSITION ALTITUDE 4000FT



MISSED APPROACH
CLIMB TO 2000FT / 610m ON
TRACK 114° CONTACT ATC
FOR FURTHER INSTRUCTION

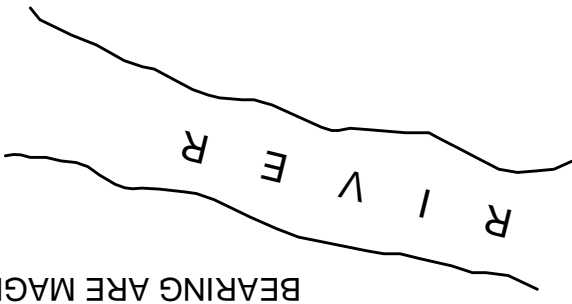
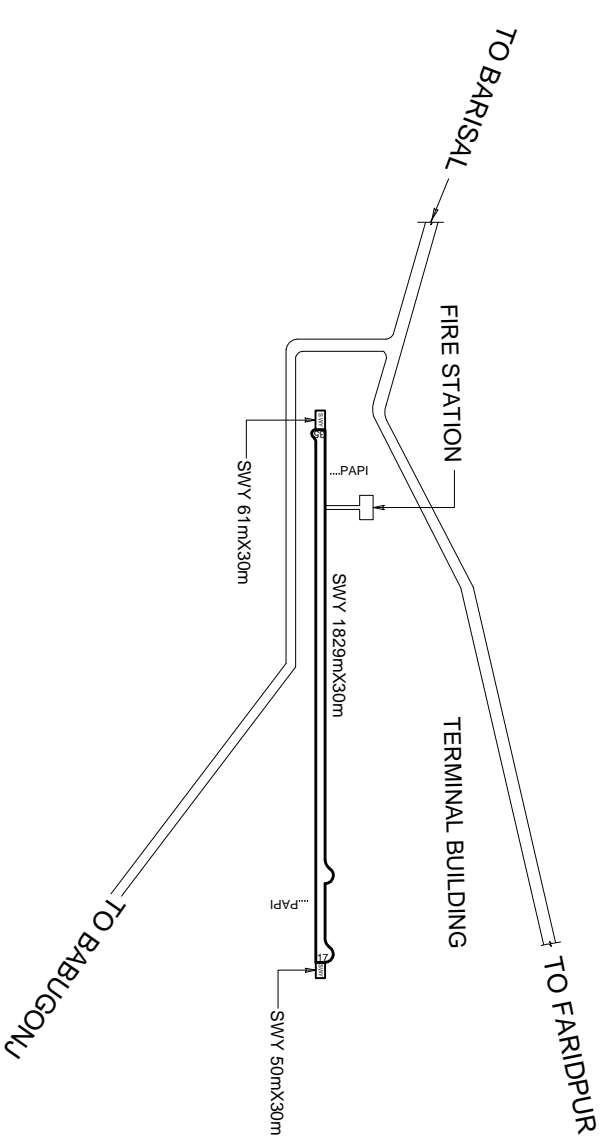
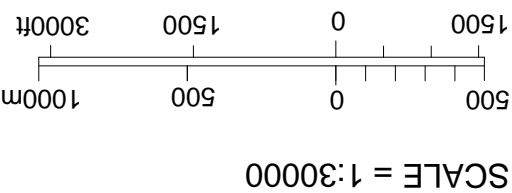
CATEGORY OF ACFT		A	B	C	D	CAT	A	B	C	D		
OCA	FULL	230	240	250	260	SPEED	KNOTS	90	120	150	260	
	GP OUT	350	350	350	350	RATE OF DESCENT/GS	FT/MIN	480	635	795	956	
DISTANCE	6 DME	5 DME	4DME	3DME	2 DME	1 DME	FAF TO THR11	MIN:S	3:54	2:55	2:20	1:57
ALTITUDE	2000	1685	1366	1048	730	411	MET MINIMA (m)	FULL	VIS: 800m, RVR: 800m			
(HEIGHT)	(1950)	(1635)	(1316)	(998)	(680)	(361)		ALS OUT	VIS: 1400m			
								GP OUT	2000m(CAT A,B) & 2800m(CAT C,D)			

AERODROME CHART - ICAO TYPE-A TYPE-A

BARISAL AIRPORT, BARISAL

MAGNETIC VARIATION 1°W

ELEV 10 FEET
HEIGHTS RELATED
TO AD ELEVATION
ELEVATION AND
HEIGHTS IN FEET



BEARING ARE MAGNETIC

MAGNETIC VARIATION 1°W

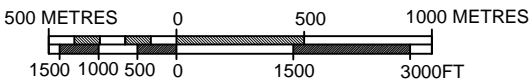
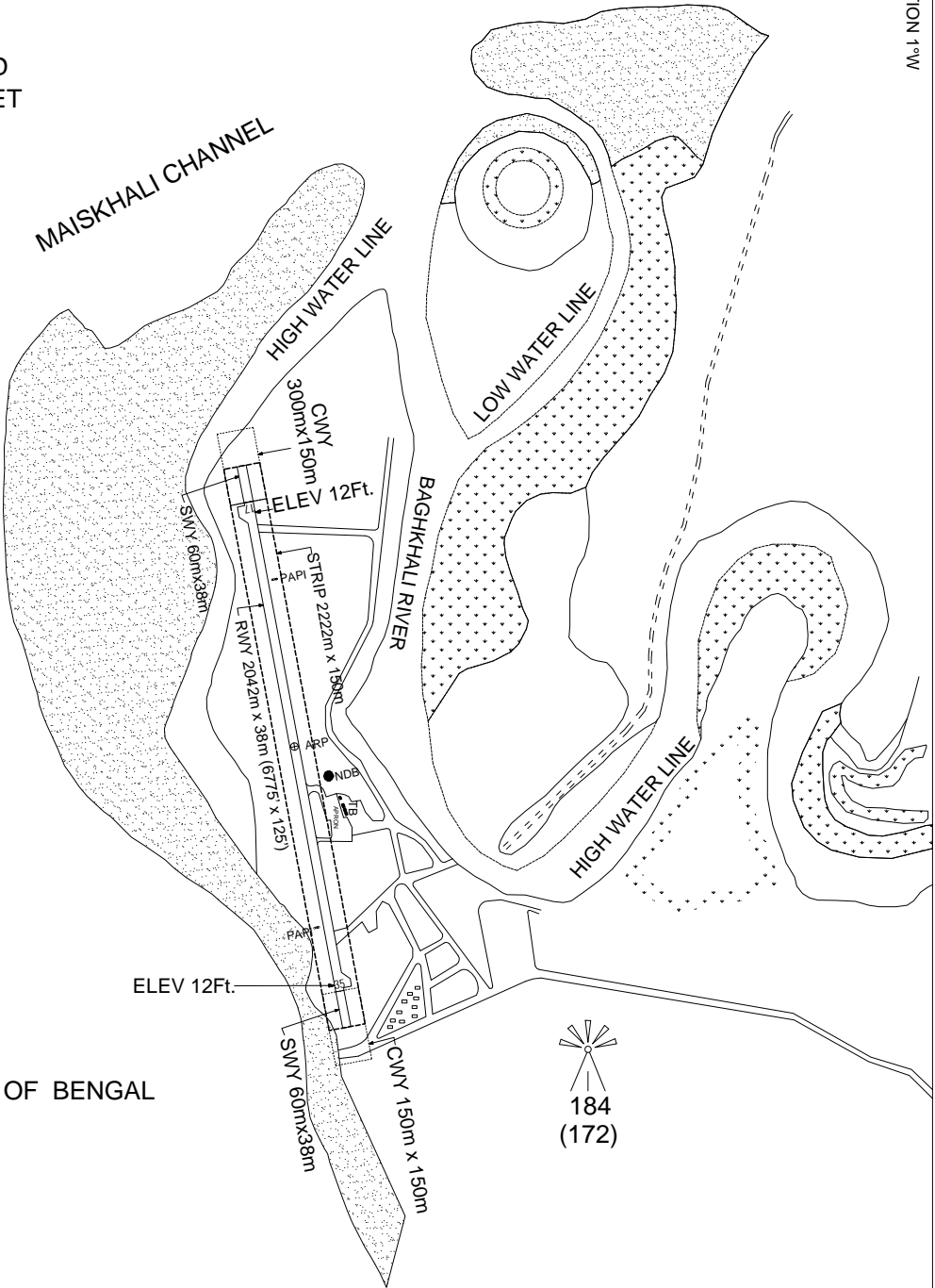


BEARING ARE MAGNETIC

ELEV 12 FT.

HEIGHTS RELATED
 TO AD ELEVATION

ELEVATION AND
 HEIGHTS IN FEET



ELEVATION 184Ft.
 HEIGHT(172)

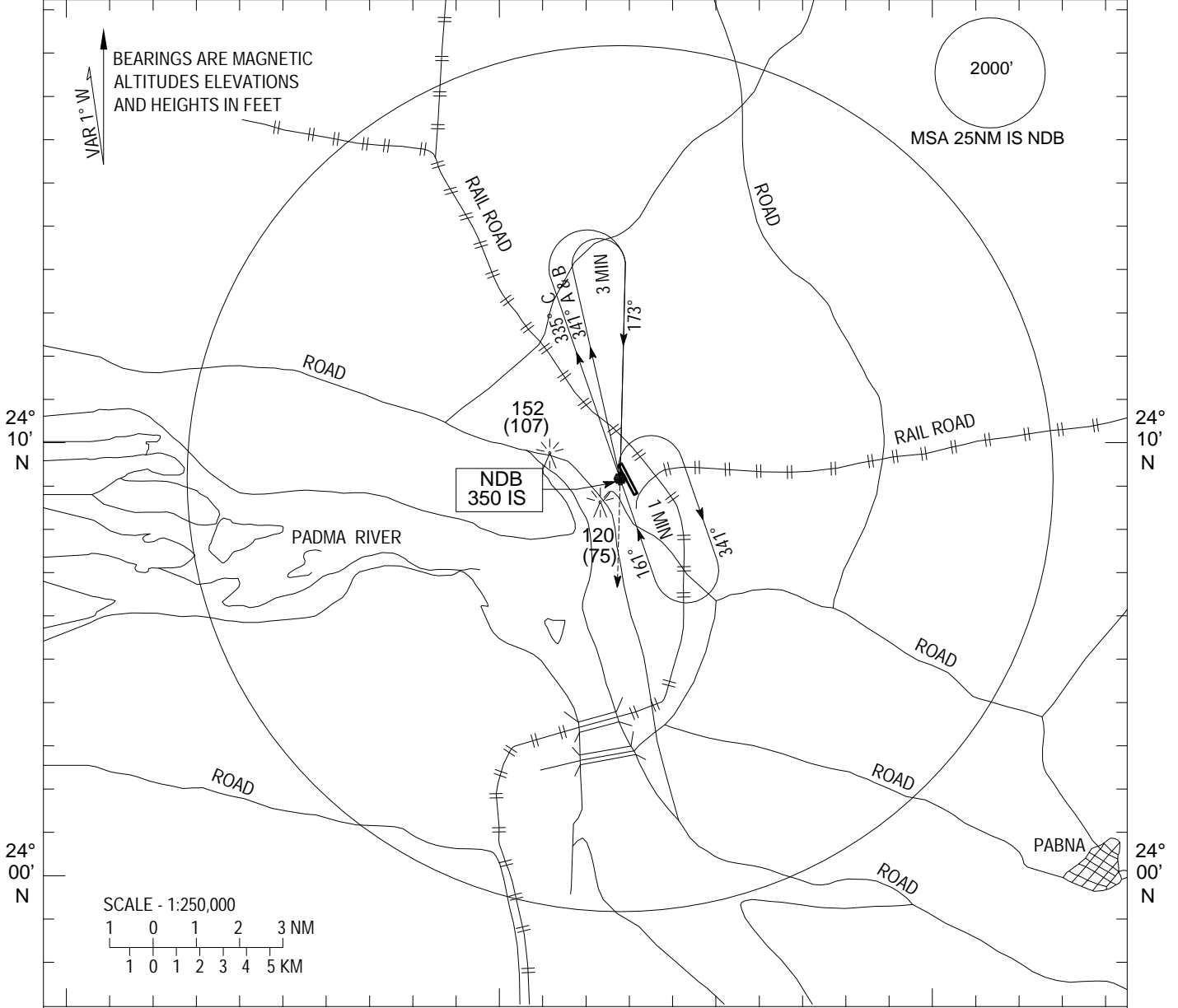
INSTRUMENT
APPROACH
CHART-ICAO

ELEV 45 FT
HEIGHTS RELATED
TO AD ELEV

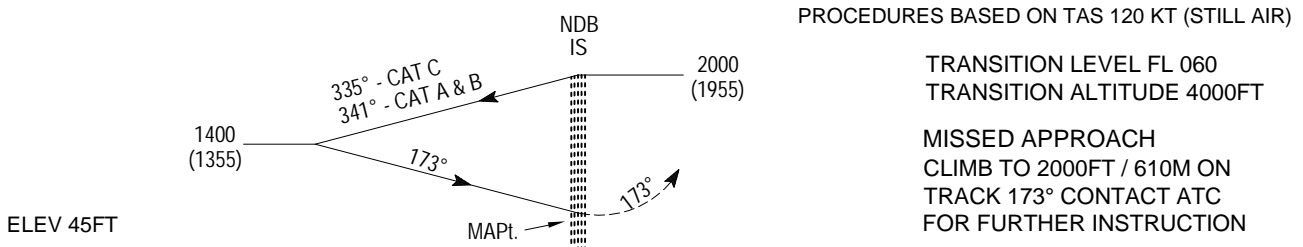
TWR 129.1

ISHURDI, BANGLADESH
ISHURDI
NDB RWY 15

88°50'E 89°00'E 89°10'E



88°50'E 89°00'E 89°10'E



PROCEDURES BASED ON TAS 120 KT (STILL AIR)
TRANSITION LEVEL FL 060
TRANSITION ALTITUDE 4000FT
MISSED APPROACH
CLIMB TO 2000FT / 610M ON
TRACK 173° CONTACT ATC
FOR FURTHER INSTRUCTION

ELEV 45FT
MET MINIMA
VIS 2800m

CATEGORY OF ACFT	A	B	C	D
OCA	450	450	450	

INSTRUMENT
APPROACH
CHART-ICAO

ELEV 45 FT
HEIGHTS RELATED
TO AD ELEV

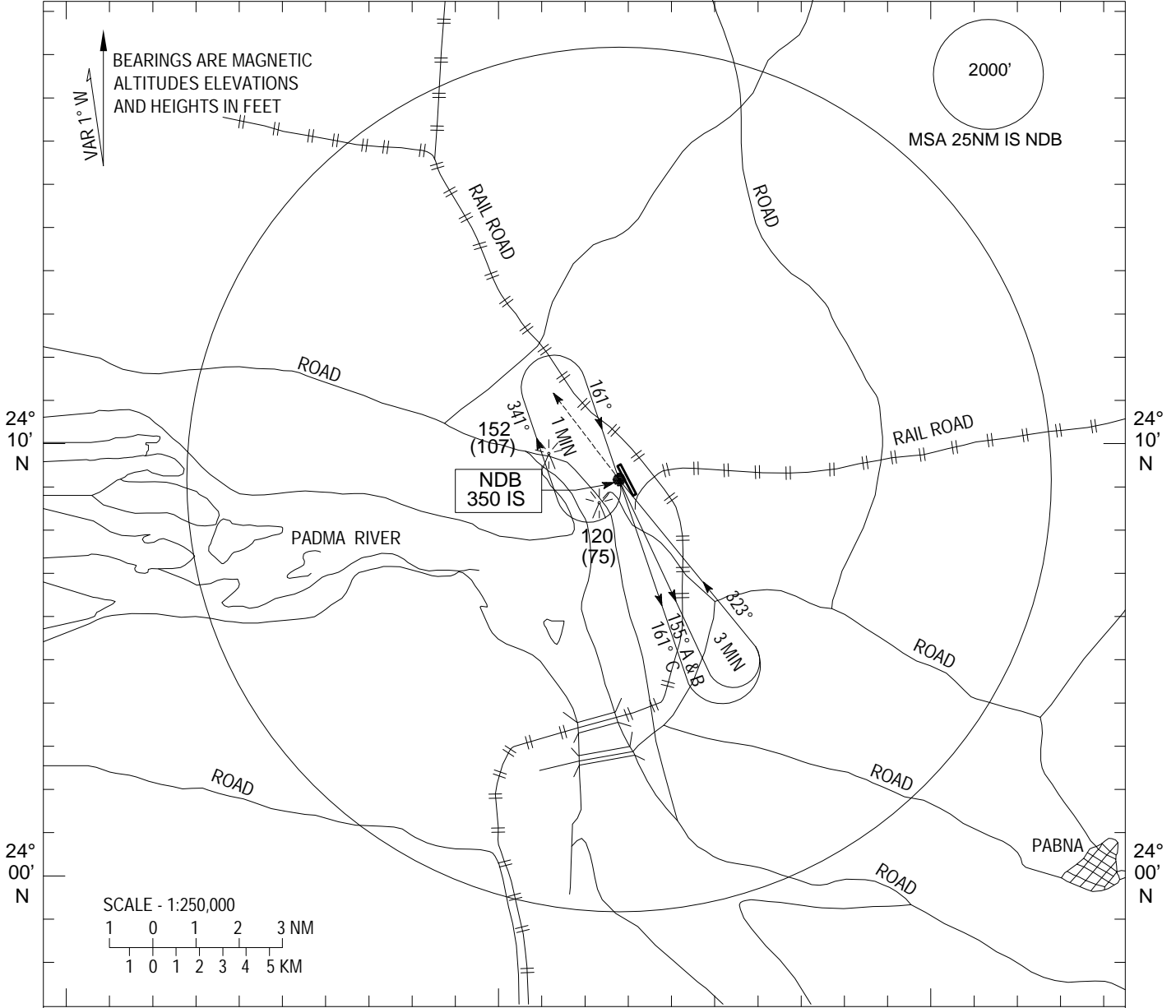
TWR 129.1

ISHURDI, BANGLADESH
ISHURDI
NDB RWY 33

88°50'E

89°00'E

89°10'E



88°50'E

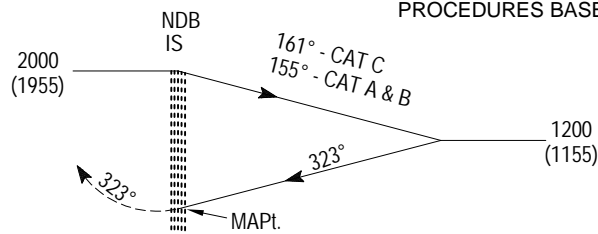
89°00'E

89°10'E

TRANSITION LEVEL FL 060
TRANSITION ALTITUDE 4000FT

PROCEDURES BASED ON TAS 120 KT (STILL AIR)

MISSED APPROACH
CLIMB TO 2000FT / 610M ON
TRACK 323° CONTACT ATC
FOR FURTHER INSTRUCTION



ELEV 45FT

MET MINIMA
VIS 2800m

5 NM

0

5 NM

CATEGORY OF ACFT	A	B	C	D
OCA	450	450	450	

VGJR AD 2.15 OTHER LIGHTING, SECONDARY POWER SUPPLY

1	ABN/IBN Location, characteristics and hours of operation	Altn W/ G every 5 sec Hours: HO, near NDB
2	LDI location and LGT Anemometer location and LGT	Nil Atop control TWR, LGT
3	TWY edge and centre line lighting	Edge: AVBL Centre line: Nil
4	Secondary power supply switch-over time	During main power supply failure, Automatic standby generator power supply available within 30 seconds
5	Remarks	Kerosene flares avbl

VGJR AD 2.16 HELICOPTER LANDING AREA

As directed by ATC

VGJR AD 2.17 AIR TRAFFIC SERVICES AIRSPACE

1	Designation	Aerodrome Traffic Zone (ATZ)
	Lateral limits	ATZ is an oval shaped area joining outer tangents of 5 NM (9KM) radius circle centered at the Runway centre and both ends of the Runway.
2	Vertical limits	4000 FT (ALT)
3	Airspace	D
4	Unit	Jessore Tower
	Language	English
5	Transition Altitude	4000 ft
6	Remarks	NIL

VGJR AD 2.18 AIR TRAFFIC SERVICES COMMUNICATIONS FACILITIES

Service designator	Call Sign	Frequency	Hours of operation	Remarks
1	2	3	4	5
Aerodrome Control Service	Jessore Tower	123.2MHZ (PRI) 123.9 MHZ (SRY)	HO	EM: A3
Surface Movement Control (SMC)	Jessore Ground	121.8 MHz	HO	EM : A3

VGJR AD 2.19 RADIO NAVIGATION AND LANDING AIDS

Types of aid variation	Ident	Frequen cy	Hours of operation	Coordinates	Elevation of DME Transmitting antenna	Remarks
1	2	3	4	5	6	7
NDB	JR	280 KHz	HO	231036.98N 0890942.23E		Em: A0/A2 PSN: 1292 FT FM THR 34, 927FT FM RWY Centre Line
VOR	JSR	113.0 MHz	HO	231036.98N 0890947.23E		PSN: 1364.54FT FM THR 34, 225.57 FT FM RWY Centre Line.

VGJR AD 2.20 LOCAL TRAFFIC REGULATIONS

Prior approval to be obtained from ATC

VGJR AD 2.21 NOISE ABATEMENT PROCEDURES

NIL

VGJR AD 2.22 FLIGHT PROCEDURES

NIL

VGJR AD 2.23 ADDITIONAL INFORMATION

NIL

VGJR AD 2.24 CHARTS RELATED TO JESSORE AIRPORT

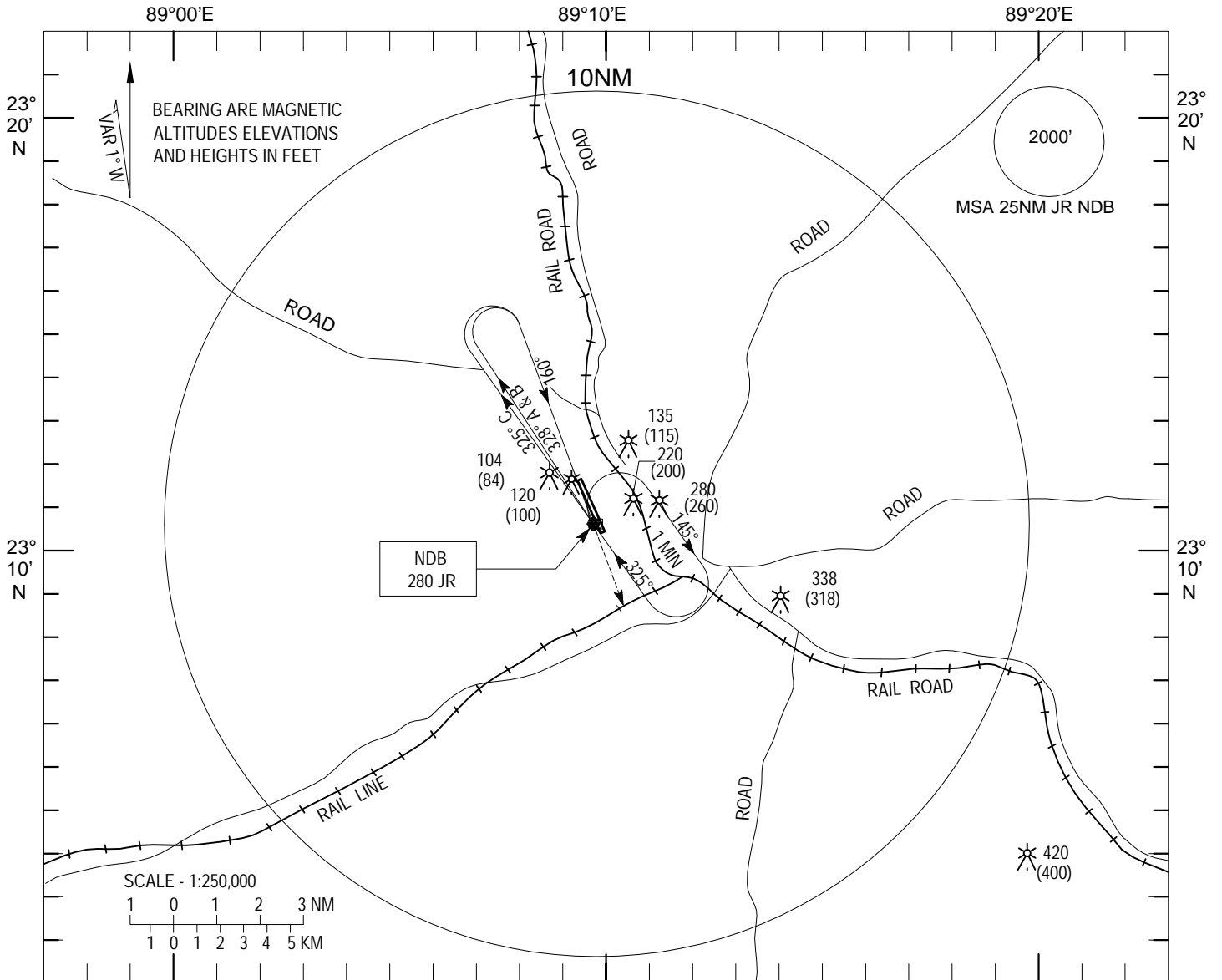
ICAO CHARTS		
NR	TYPE OF CHART	PAGE NR (VGJR)
1	AERODROME CHART	AD 2-7
2	INSTRUMENT APPROACH CHART	AD 2-9 to AD 2-15

INSTRUMENT APPROACH
CHART- ICAO

ELEV 20FT
HEIHGTS RELATED
TO AD ELEV

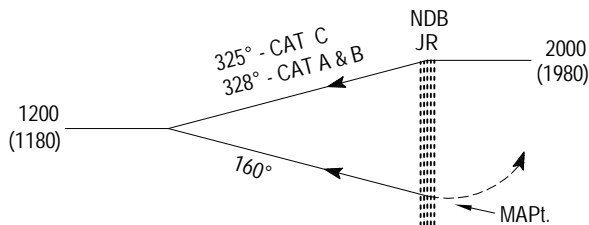
TWR 123.2
SMC 121.8

JESSORE, BANGLADESH
JESSORE
NDB RWY 16



TRANSITION LEVEL FL 060
TRANSITION ALTITUDE 4000FT

START TURN AT
CAT A & B : 3 MIN
CAT C : 2.5 MIN



MET MINIMA
VIS 2800 m

5 NM 0 4 NM

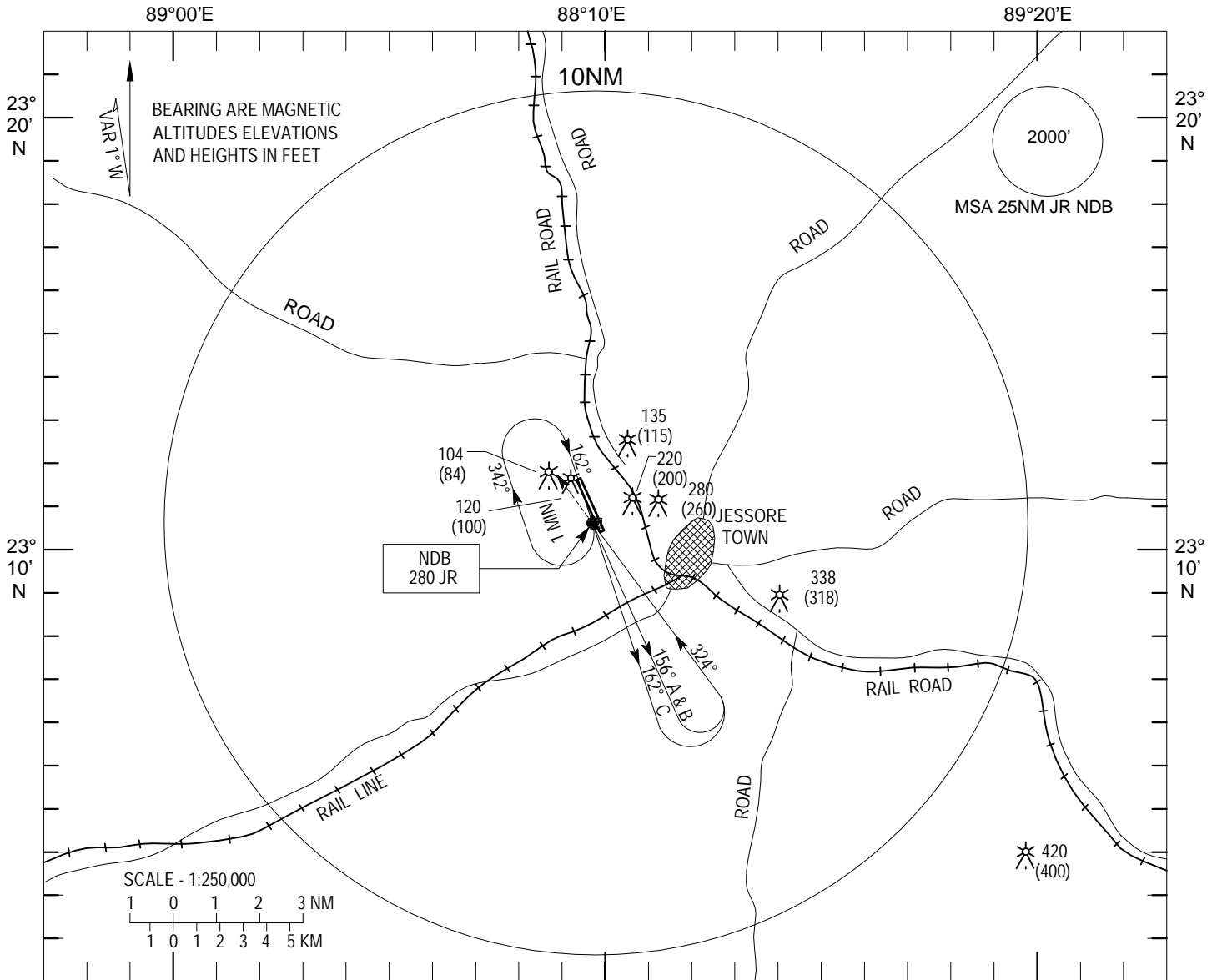
CATEGORY OF ACFT		A	B	C	D
OCA		450	450	450	-
SPEED	KNOTS	90	120	150	-

INSTRUMENT
APPROACH
CHART- ICAO

ELEV 20FT
HEIHGTS RELATED
TO AD ELEV

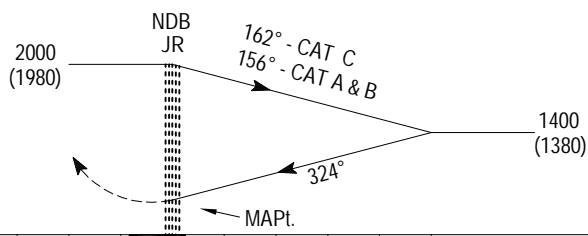
TWR 123.2
SMC 121.8

JESSORE, BANGLADESH
JESSORE
NDB RWY 34



TRANSITION LEVEL FL 060
TRANSITION ALTITUDE 4000FT

MISSED APPROACH
CLIMB TO 2000FT / 610M ON
TRACK 324° CONTACT ATC
FOR FURTHER INSTRUCTION



START TURN AT
CAT A & B : 3 MIN
CAT C : 2 MIN

MET MINIMA
VIS 2800 m

5 NM 0 5 NM

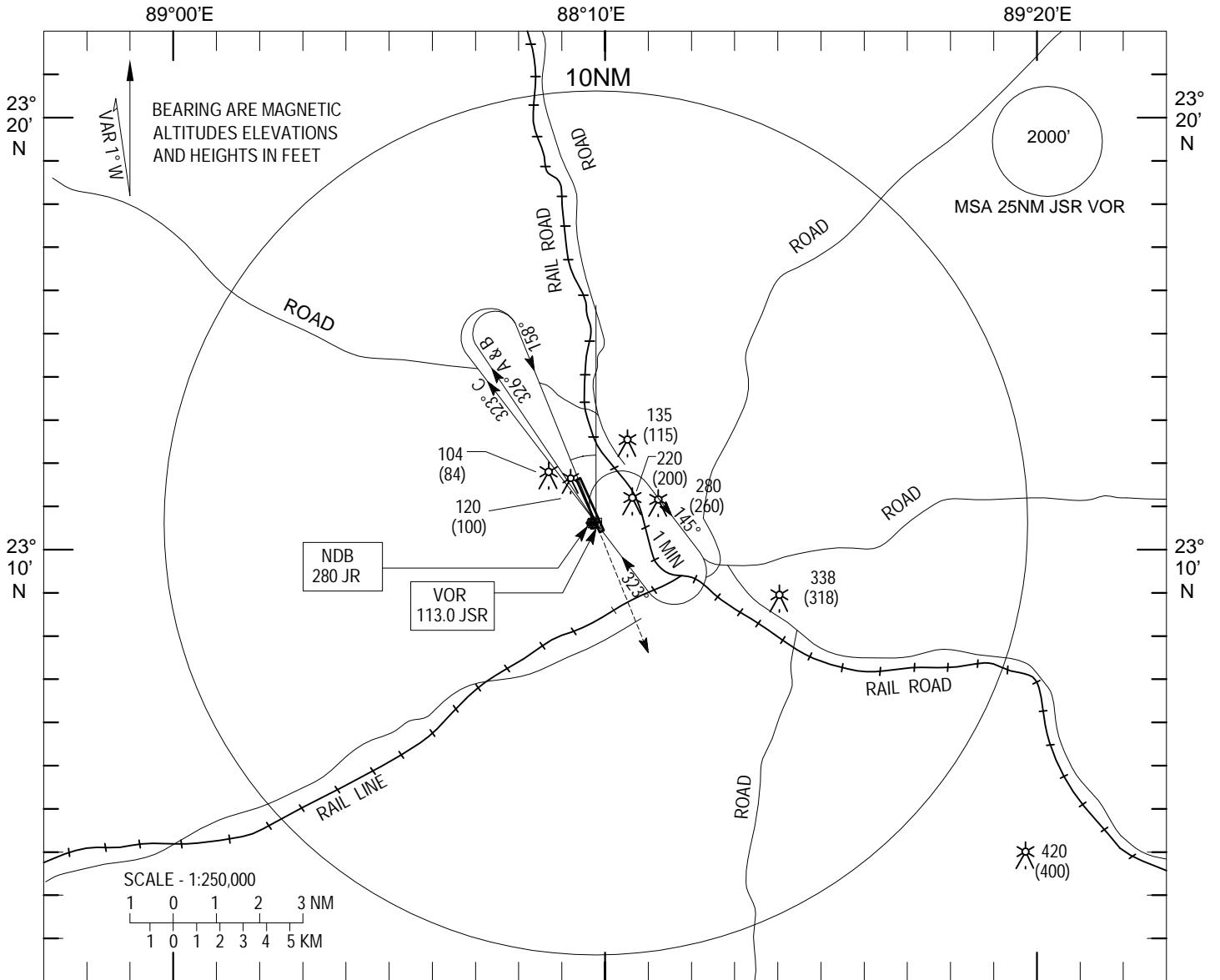
CATEGORY OF ACFT		A	B	C	D
OCA		460	460	460	-
SPEED	KNOTS	90	120	150	-

INSTRUMENT
APPROACH
CHART- ICAO

ELEV 20FT
HEIGHTS RELATED
TO AD ELEV

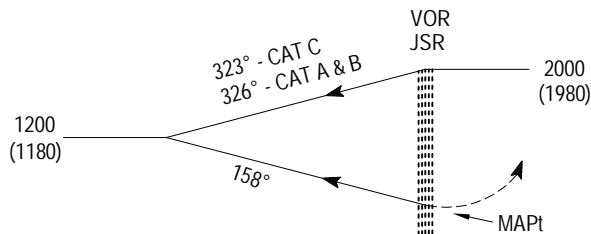
TWR 123.2
SMC 121.8

JESSORE, BANGLADESH
JESSORE
VOR RWY 16



TRANSITION LEVEL FL 060
TRANSITION ALTITUDE 4000FT

START TURN AT
CAT A & B : 3 MIN
CAT C : 2.5 MIN



MISSED APPROACH
CLIMB TO 2000FT / 610M ON
TRACK 160° CONTACT ATC
FOR FURTHER INSTRUCTION

MET MINIMA
VIS 2800 m

5 NM 0 4 NM

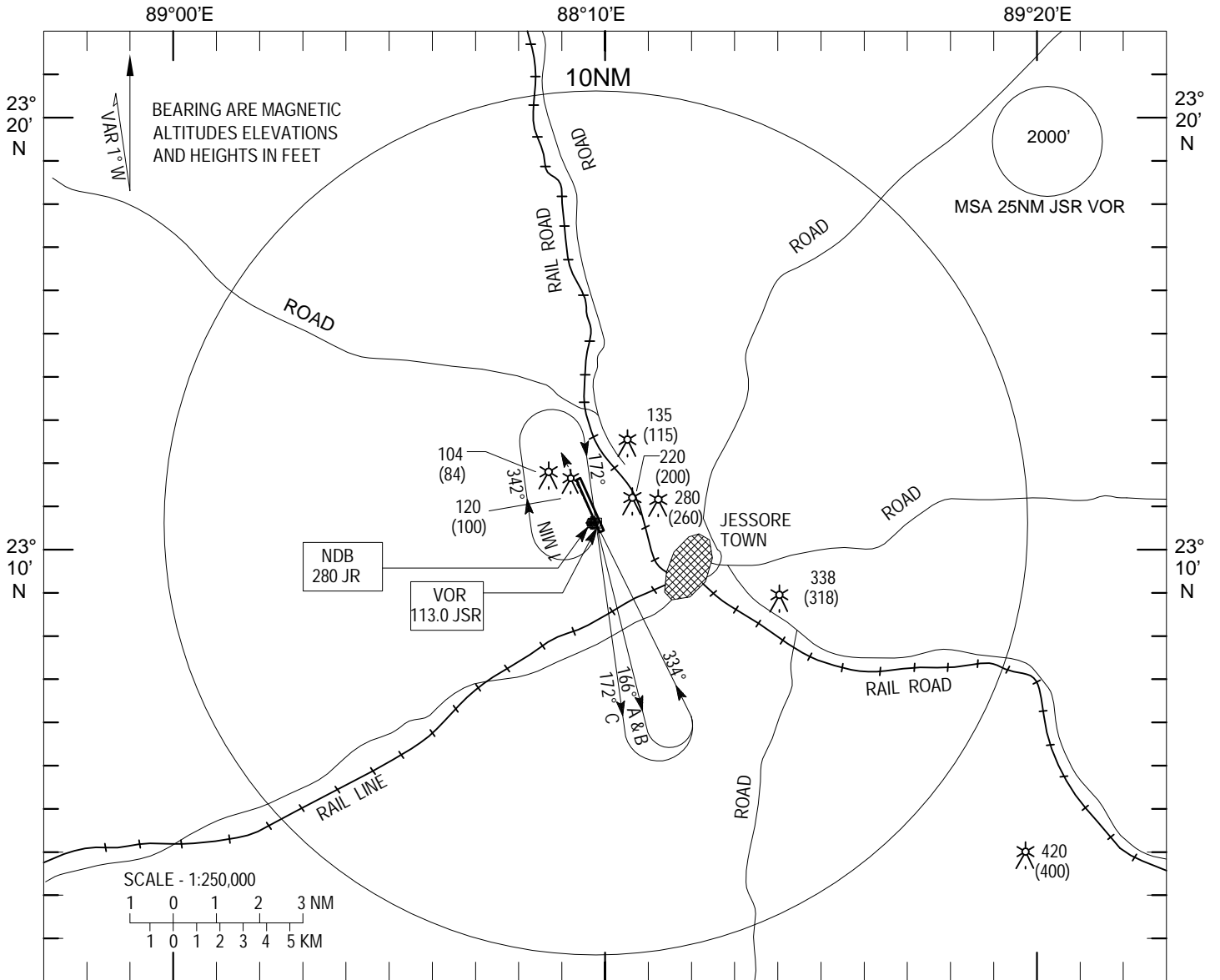
CATEGORY OF ACFT		A	B	C	D
OCA		450	450	450	
SPEED	KNOTS	<91	91-120	121-140	
MET MINIMA	VIS (M)	1600	2000	2800	

INSTRUMENT APPROACH
CHART- ICAO

ELEV 20FT
HEIGHTS RELATED
TO AD ELEV

TWR 123.2
SMC 121.8

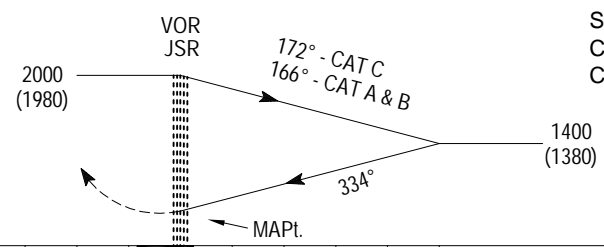
JESSORE, BANGLADESH
JESSORE
VOR RWY 34



TRANSITION LEVEL FL 060
TRANSITION ALTITUDE 4000FT

MISSED APPROACH
CLIMB TO 2000FT / 610M ON
TRACK 334° CONTACT ATC
FOR FURTHER INSTRUCTION

START TURN AT
CAT A & B : 3 MIN
CAT C : 2 MIN



MET MINIMA VIS 2800 m

CATEGORY OF ACFT		A	B	C	D
OCA		460	460	460	
SPEED	KNOTS	< 91	91-120	121-140	
MET MINIMA	VIS (M)	1600	2000	2800	

VGRJ AD 2.18 AIR TRAFFIC SERVICES COMMUNICATIONS FACILITIES

Service designator	Call Sign	Frequency	Hours of operation	Remarks
1	2	3	4	5
Aerodrome Control Service	Rajshahi Tower	128.3 MHZ EM: A3	HO	Nil

VGRJ AD 2.19 RADIO NAVIGATION AND LANDING AIDS

Types of aid variation	Ident	Frequency	Hours of operation	Coordinates	Elevation of DME Transmitting antenna	Remarks
1	2	3	4	5	6	7
NDB	RJ	228 Khz	H24	242632.87N 0883649.35E		EM : A0/A2
DVOR	RAJ	114.6 MHZ	H24	242621.18N 0883654.10E		EM: A2
DME	RAJ	1180 MHZ	H24	242621.18N 0883654.10E		Co-located with VOR

VGRJ AD 2.20 LOCAL TRAFFIC REGULATIONS

Prior approval to be obtained from ATC

VGRJ AD 2.21 NOISE ABATEMENT PROCEDURES

NIL

VGRJ AD 2.22 FLIGHT PROCEDURES

NIL

VGRJ AD 2.23 ADDITIONAL INFORMATION

NIL

VGRJ AD 2.24 CHARTS RELATED TO RJS Shahi AIRPORT

ICAO CHARTS		
NR	TYPE OF CHART	PAGE NR. (VGRJ)
1	AERODROME CHART	AD 2-7
2	INSTRUMENT APPROACH CHART	AD 2-9 TO AD 2-15

INTENTIONALLY LEFT BLANK

INSTRUMENT
APPROACH
CHART- ICAO

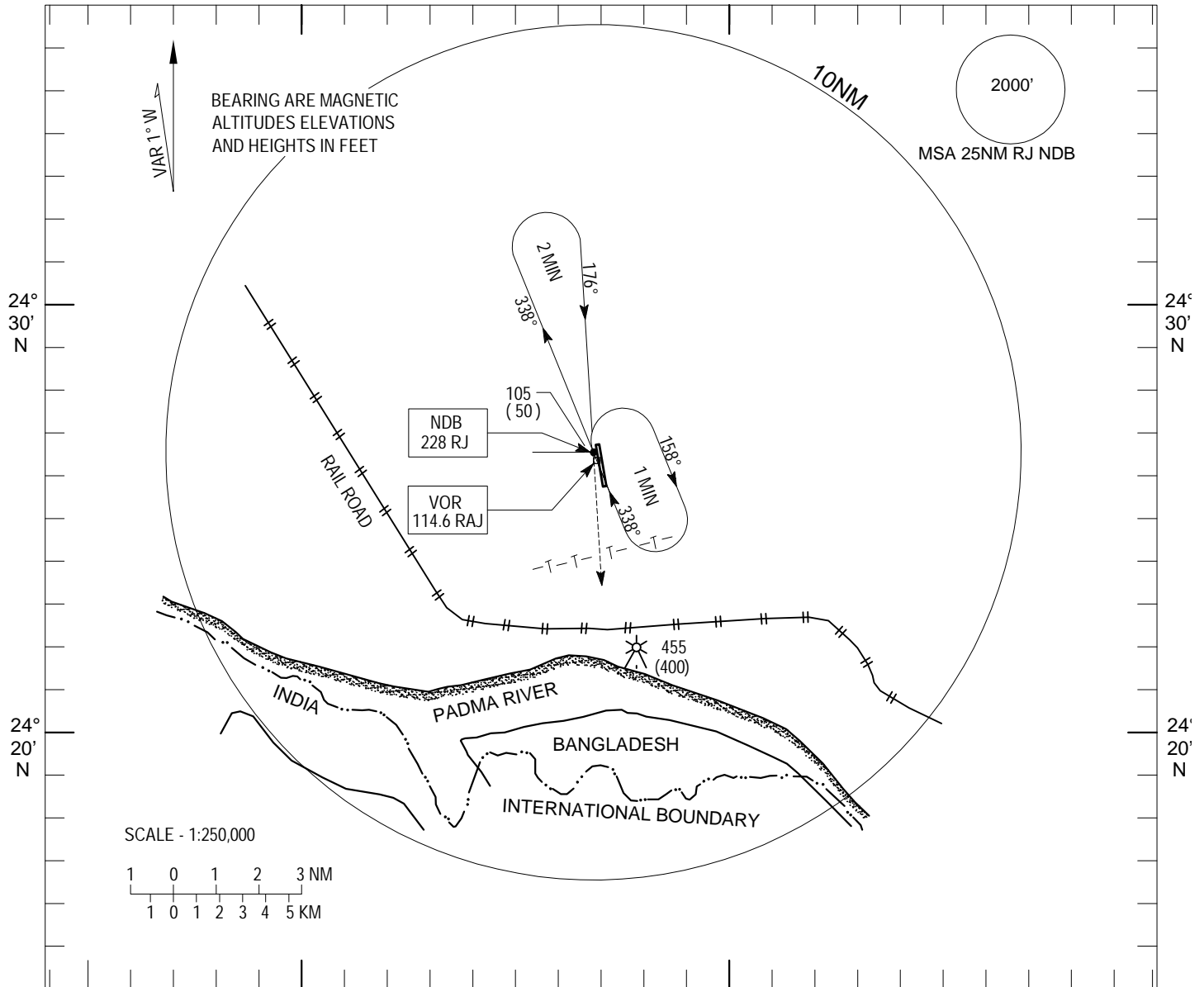
ELEV 55FT
HEIGHTS RELATED
TO AD ELEV

TWR 128.3

RAJSHAHI, BANGLADESH
SHAH MOKHDUM
NDB RWY 17

88°30'E

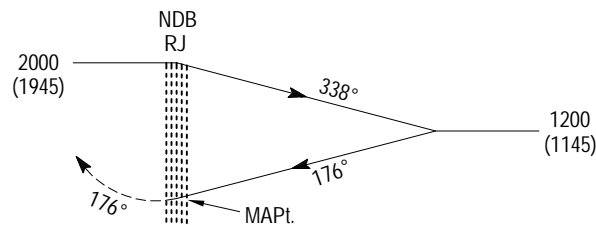
88°40'E



TRANSITION LEVEL FL 060
TRANSITION ALTITUDE 2000FT

PROCEDURES BASED ON TAS 150 KT (STILL AIR)

MISSED APPROACH
CLIMB TO 2000FT / 610M ON
TURNING LEFT AND CONTACT
RAJSHAHI TOWER



ELEV 55FT

MET MINIMA
VIS 2800 m

4 NM 3 2 1 0 1 2 3 4 5 NM

CATEGORY OF ACFT	A	B	C	D
OCA	450	450	450	

NOTE : INTERNATIONAL BOUNDARY APPROXIMATELY
7 NM SOUTH OF THE AIRFIELD AIRCRAFT TO
REMAIN WITHIN BANGLADESH TERRITORY

INSTRUMENT
APPROACH
CHART- ICAO

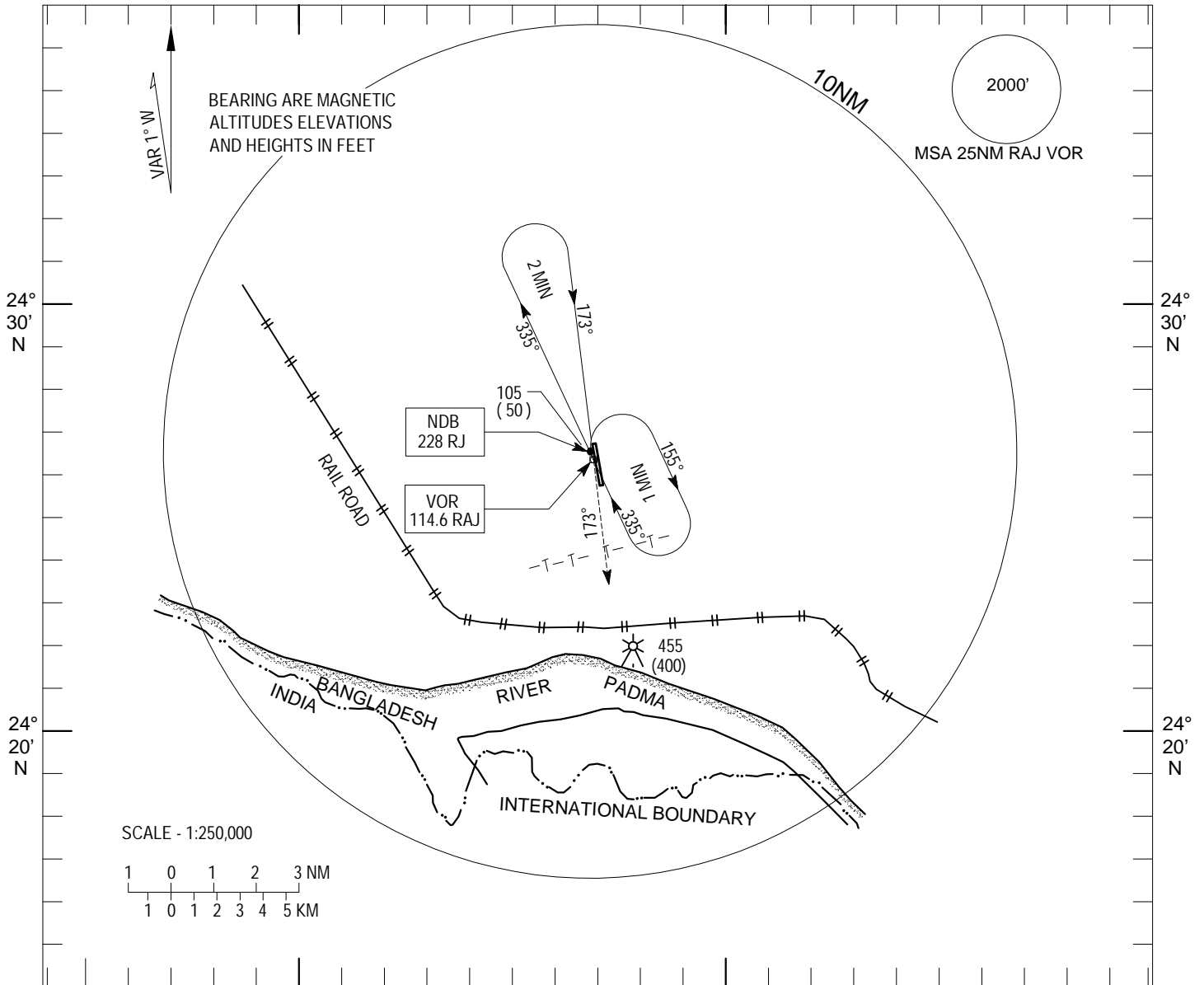
ELEV 55FT
HEIGHTS RELATED
TO AD ELEV

TWR 128.3

RAJSHAHI, BANGLADESH
SHAH MOKHDUM
VOR RWY 17

88°30'E

88°40'E



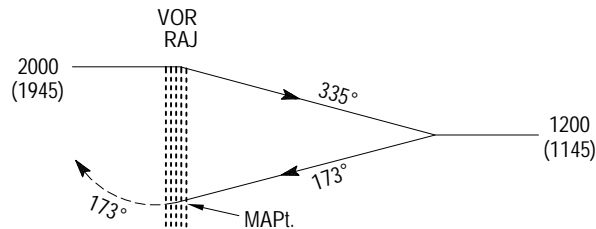
88°30'E

88°40'E

TRANSITION LEVEL FL 060
TRANSITION ALTITUDE 2000FT

PROCEDURES BASED ON TAS 150 KT (STILL AIR)

MISSED APPROACH
CLIMB TO 2000FT / 610M ON
TURNING LEFT AND CONTACT
RAJSHAHI TOWER



ELEV 55FT

MET MINIMA
VIS 2800 m

4 NM 3 2 1 0 1 2 3 4 5 NM

CATEGORY OF ACFT

A B C D

OCA

450 450 450

NOTE : INTERNATIONAL BOUNDARY APPROXIMATELY
7 NM SOUTH OF THE AIRFIELD AIRCRAFT TO
REMAIN WITHIN BANGLADESH TERRITORY

INSTRUMENT
APPROACH
CHART- ICAO

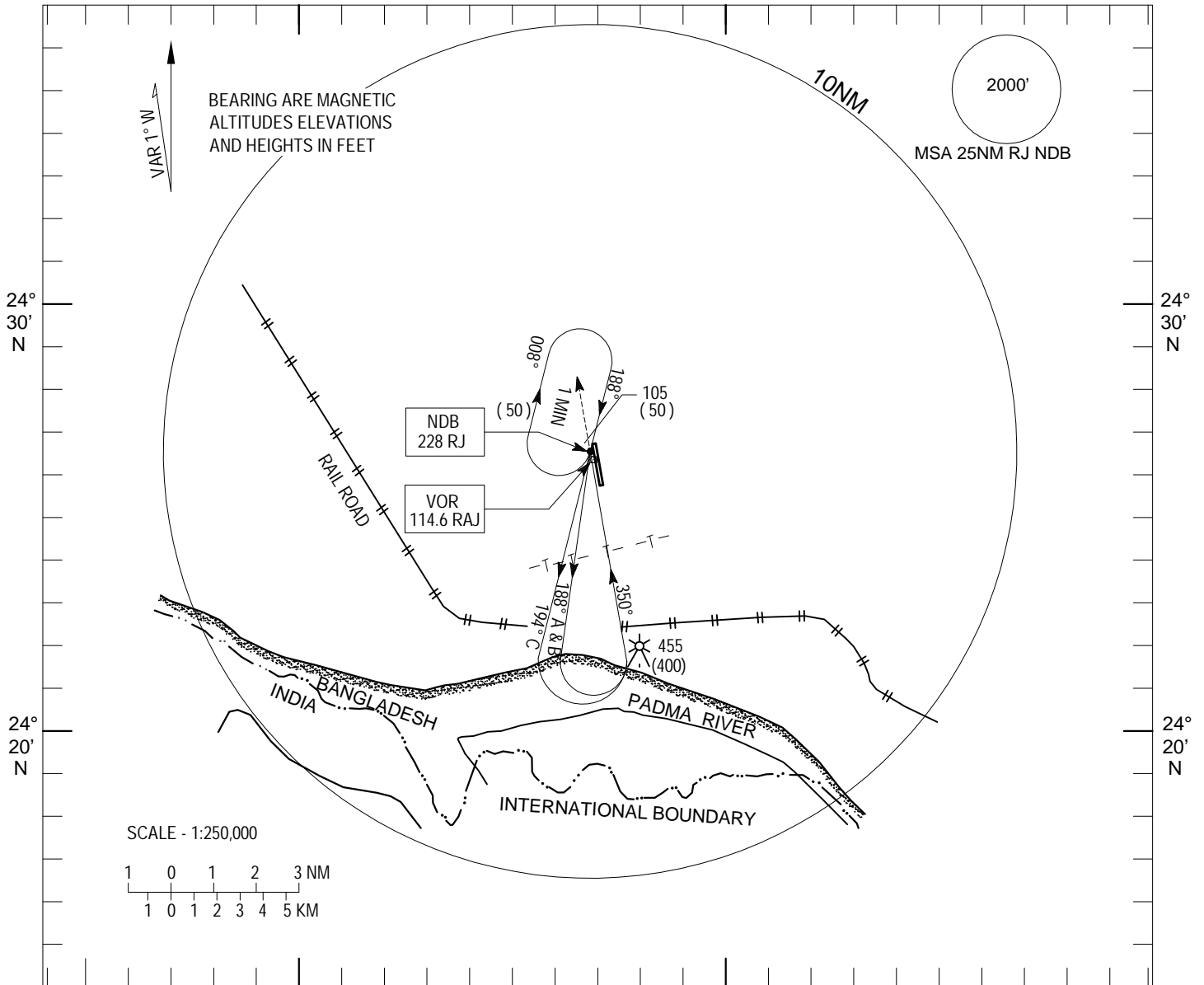
ELEV 55FT
HEIHGTS RELATED
TO AD ELEV

TWR 128.3

RAJSHAHI, BANGLADESH
SHAH MOKHDUM
NDB RWY 35

88°30'E

88°40'E

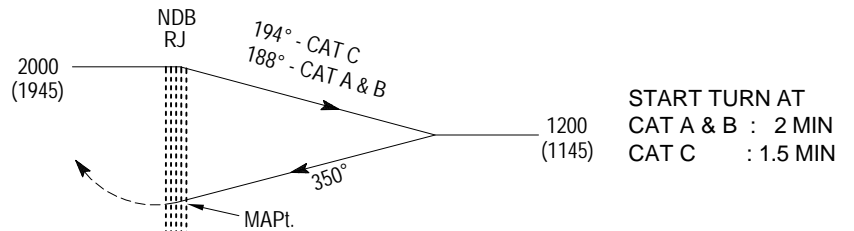


TRANSITION LEVEL FL 060
TRANSITION ALTITUDE 4000FT

MISSED APPROACH
CLIMB TO 2000FT / 610M ON
TRACK 350 AND CONTACT FOR
FURTHER INSTRUCTION

ELEV 55FT

MET MINIMA
VIS 2800 m



START TURN AT
CAT A & B : 2 MIN
CAT C : 1.5 MIN

4 NM 3 2 1 0 1 2 3 4 5 NM

CATEGORY OF ACFT		A	B	C	D
OCA		550	550	550	
SPEED	KNOTS	90	120	150	
MET MINIMA	VIS (m)	2000	2000	2800	

CAUTION FOR :

1. A RADIO MAST PSN 24 21 54.43 N 088 38 23.88 E HIGHT 400 FT
2. POWER LINE MAST HEIGHT 100 FT (EACH) 11000 FT FM THR RWY 35
3. INTL. BOUNDARY A/C TO REMAIN WITHIN BANGLADESH TERRITORY

INSTRUMENT
APPROACH
CHART- ICAO

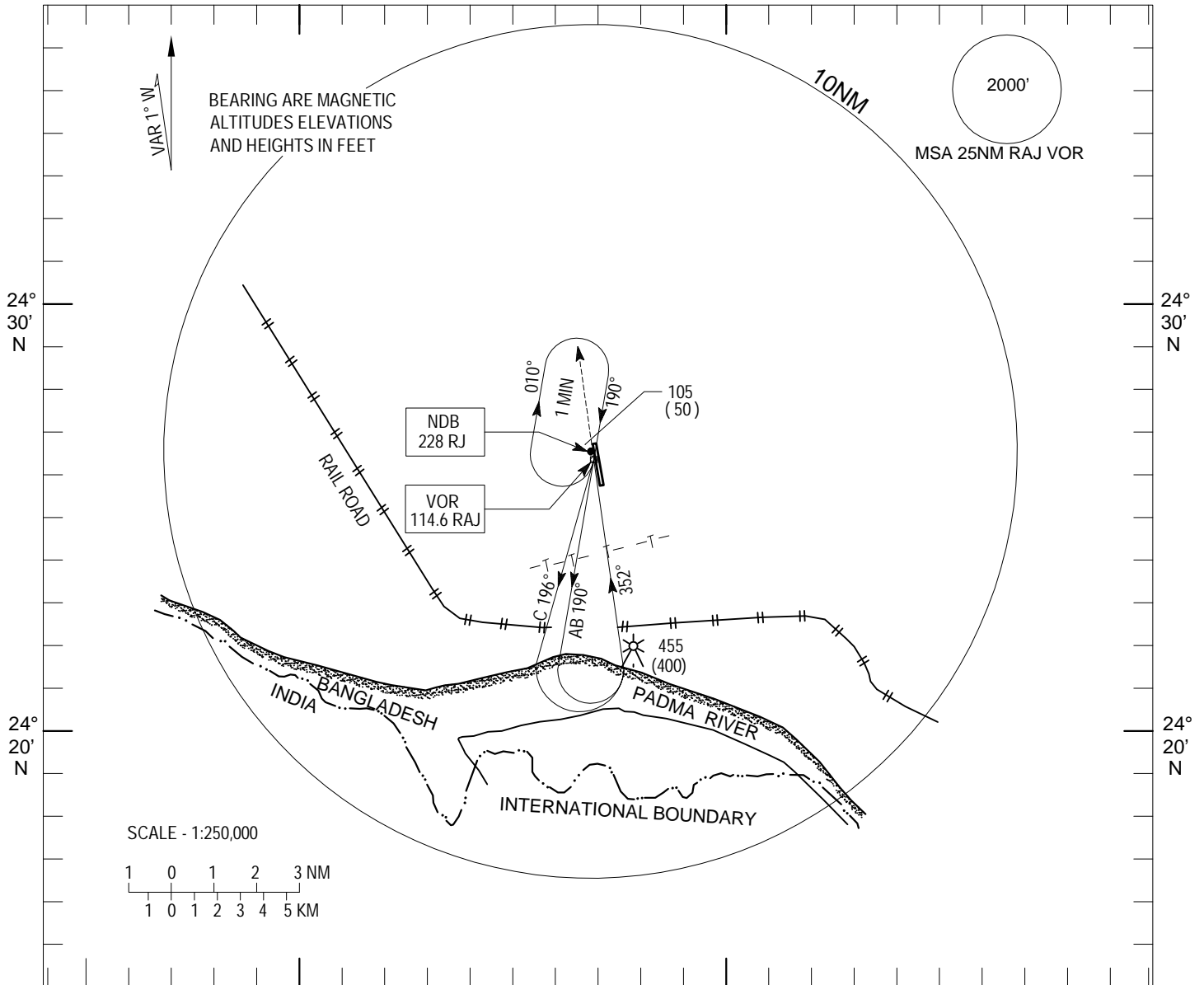
ELEV 55FT
HEIHGTS RELATED
TO AD ELEV

TWR 128.3

RAJSHAHI, BANGLADESH
SHAH MOKHDUM
VOR RWY 35

88°30'E

88°40'E



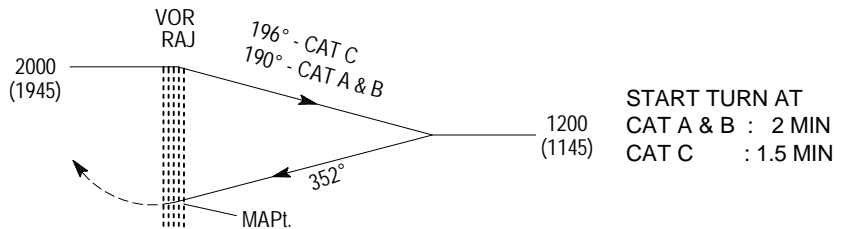
TRANSITION LEVEL FL 060
TRANSITION ALTITUDE 2000FT

PROCEDURES BASED ON TAS 150 KT (STILL AIR)

MISSED APPROACH

CLIMB TO 2000FT / 610M ON
TRACK 352° AND CONTACT FOR
RAJSHAHI TOWER

ELEV 55FT



MET MINIMA
VIS 2800 m

4 NM 3 2 1 0 1 2 3 4 5 NM

CATEGORY OF ACFT		A	B	C	D
OCA		550	550	550	
SPEED	KNOTS	90	120	150	
MET MINIMA	VIS (m)	2000	2000	2800	

CAUTION FOR :

1. INTL. BOUNDARY APPX. 7 NM SOUTH OF THE AIRFIELD A/C TO REMAIN WITHIN BANGLADESH TERRITORY
2. A RADIO MAST PSN 24 21 54.43 N 088 38 23.88 E HIGHT 400 FT
3. POWER LINE MAST HEIGHT 100 FT (EACH) 11000 FT FM THR RWY 35

VGSD AD 2.11 METEOROLOGICAL INFORMATION PROVIDED

1	Associated MET office	Saidpur (VGSD)
2	Hours of Service	HO
3	Office responsible for TAF preparation Periods of validity	HAZRAT SHAHJALAL INTL (VGHS) 6
4	Type of landing forecast Interval of issuance	-
5	Briefing/consultation provided	Provided at VGHS
6	Flight documentation Languages used	C PL English
7	Charts and other information avbl for briefing or consultation	-
8	Supplementary equipment avbl for providing information	-
9	ATS units provided with information	TWR
10	Additional information	Tel: Nil

VGSD AD 2.12 RUNWAY PHYSICAL CHARACTERISTICS

Designator RWY NR	TRUE & MAG BRG	Dimensions of RWY (m)	Strength(PCN) and surface of RWY & SWY	THR Coordinates	THR elevation (FT)	Slope of RWY- SWY
1	2	3	4	5	6	7
16	156°	1829 X 30	PCN17/F/C/Y/T Bituminous Concrete	254600.55N 0885420.94E	125	NIL
34	336°			254504.74N 0885443.91E	125	NIL

Designator/ RWY NR	SWY Dimensions (m)	CWY Dimensions(m)	Strip Dimensions (m)	RESA	Remarks
	8	9	10	11	12
16	30X30	180X150	2039X150	90X60	RWY transverse Slope is 1%
34	60X30	210X150	2039X150	90X60	

VGSD 2.13 DECLARED DISTANCES

RWY	TORA (m)	TODA (m)	ASDA(m)	LDA (m)	RESA(m)	Remarks
1	2	3	4	5	6	7
16	1829	2009	1859	1829	90	Due to introduction of RESA
34	1829	2039	1889	1829	90	

VGSD AD 2-14 APPROACH AND RUNWAY LIGHTING

RWY Designator	APCH	THR	PAPI	TDZ	RWY Centre	RWY edge	END & WBAR	STWY	Remarks
1	2	3	4	5	6	7	8	9	10
16	Nil	Six Green LGT	4 BAR PAPI	NIL	NIL	60M apart While omni-directional with fixed intensity	6 Nr Red mom-directional WBAR NIL	NIL	NIL
34	NIL	Six Green LGT	4 BAR PAPI	NIL	NIL	60M apart While omni-directional With fixed intensity	6 Nr Red mom-directional WBAR NIL	NIL	NIL

VGSD AD 2.15 OTHER LIGHTING, SECONDARY POWER SUPPLY

1	AB/IBN location, characteristics and hours of operations	NIL
2	LDI location and LGT Anemometer location and LGT	NIL Atop Control TWR
3	TWY edge and centre line lighting	Edge: Avbl Centre line: Nil
4	Secondary power supply switch-over time	During main power supply failure, automatic standby generator power supply available within 15 seconds
5	Remarks	Apron lights: avbl

VGSD AD 2.16 HELICOPTER LANDING AREA

As directed by ATC

VGSD AD 2.17 AIRTRAFFIC SERVICES AIRSPACE

1	Designation Lateral limits	Aerodrome Traffic Zone (ATZ) ATZ is a oval shaped area joining outer tangents of 5NM (9KM) radius circle centered at the runway centre and both ends of the runway.
2	Vertical limits	4000FT (AMSL)
3	Airspace	D
4	Unit Language	Saidpur Tower English
5	Transition Altitude	4000FT
6	Remarks	NIL

INSTRUMENT
APPROACH
CHART-ICAO

ELEV 125 FT
HEIGHTS RELATED
TO AD ELEV

TWR 128.9

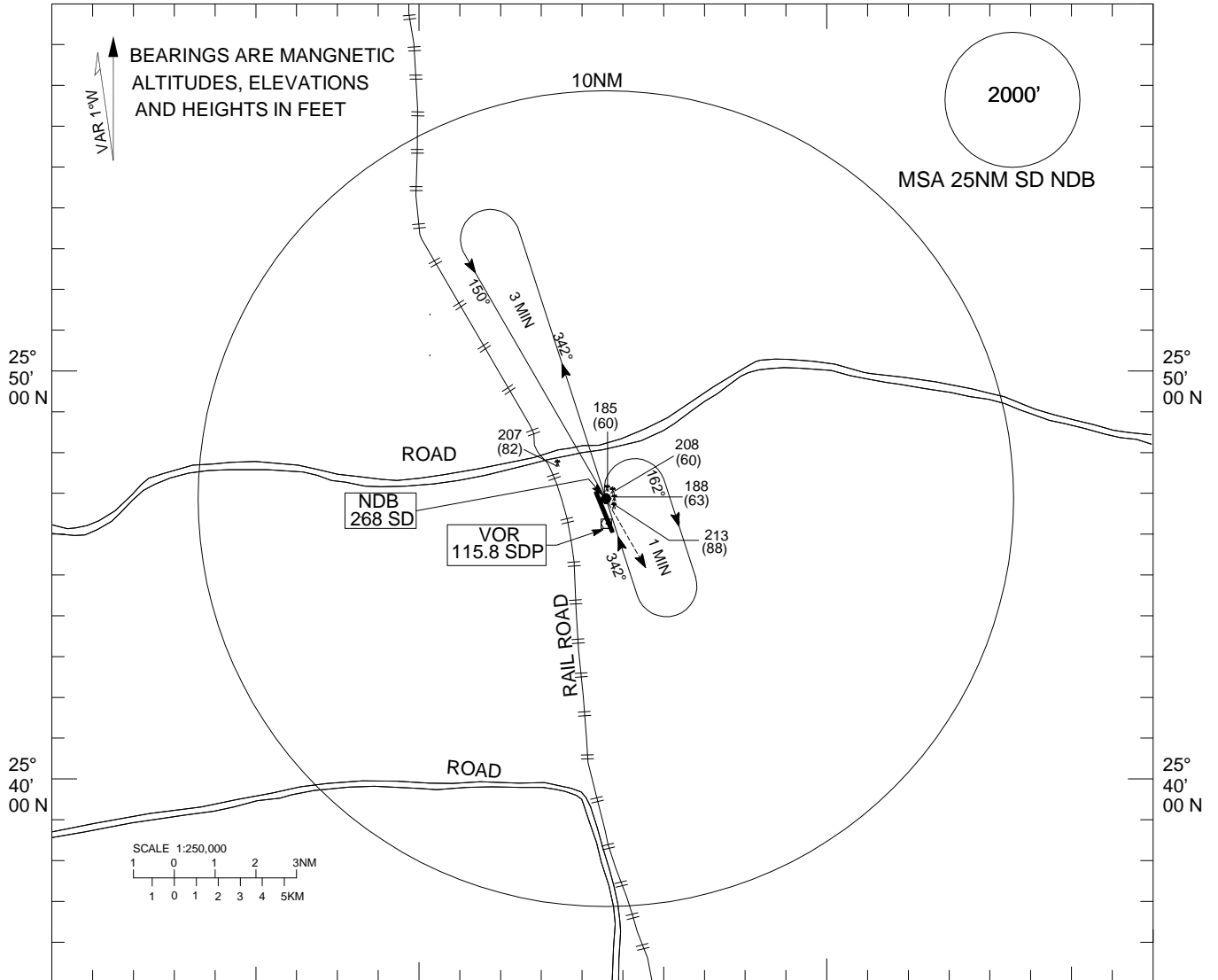
SAIDPUR, BANGLADESH

SAIDPUR

NDB RWY 16

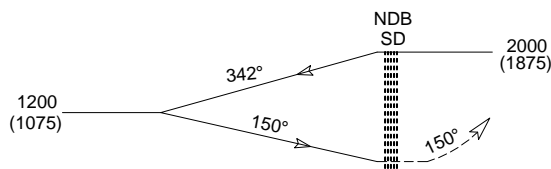
88° 50' 00E

89° 00' 00E



TRANSITION LEVEL FL 060
TRANSITION ALTITUDE 4000FT

88° 50' 00
89° 00' 00
PROCEDURES BASED ON TAS 150 KT (STILL AIR)



MISSED APPROACH
CLIMB TO 2000 FT/610 m ON
TRACK 150° AND CONTACT ATC
FOR FURTHER INSTRUCTION

ELEV 125 FT

MET MINIMA
VIS 2800m

7 6 5 4 3 2 1 0 1 2 3 4 5 6 7 8 NM

CATEGORY OF ACFT	A	B	C	D
O C A	500	550	550	

**AIP
BANGLADESH**

VGSD AD 2 - 11

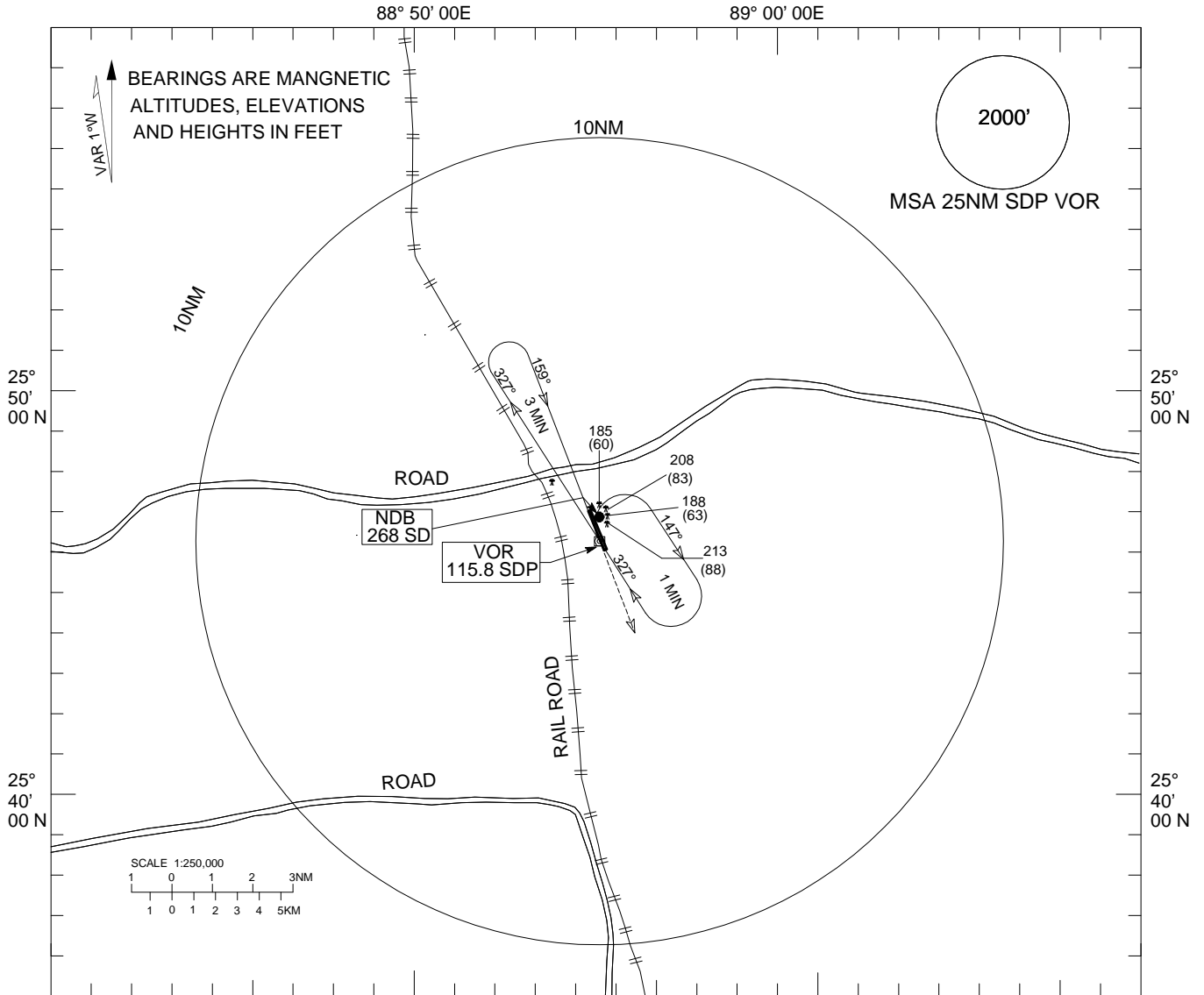
08 DEC 2016

INSTRUMENT
APPROACH
CHART-ICAO

ELEV 125 FT
HEIGHTS RELATED
TO AD ELEV

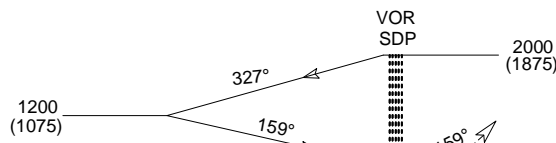
TWR 128.9

SAIDPUR, BANGLADESH
SAIDPUR
VOR RWY 16



TRANSITION LEVEL FL 060
TRANSITION ALTITUDE 4000FT

89° 00' 00
PROCEDURES BASED ON TAS 150 KT (STILL AIR)



MISSED APPROACH
CLIMB TO 2000 FT/610 m ON
TRACK 159° AND CONTACT ATC
FOR FURTHER INSTRUCTION

ELEV 125 FT

MET MINIMA
VIS 2800m

7 6 5 4 3 2 1 0 1 2 3 4 5 6 7 8 NM

CATEGORY OF ACFT	A	B	C	D
O C A	500	550	550	

INSTRUMENT
APPROACH
CHART-ICAO

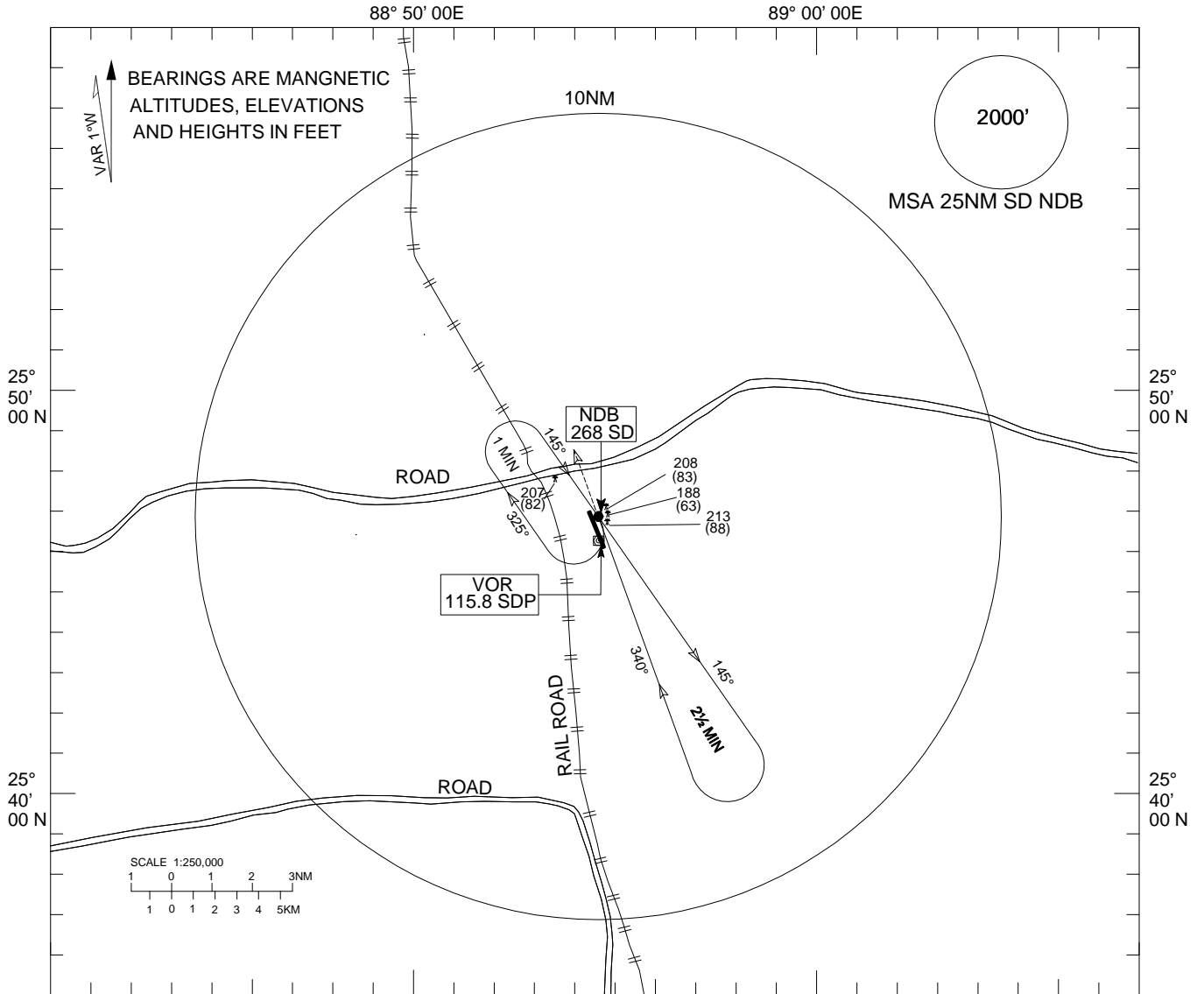
ELEV 125 FT
HEIGHTS RELATED
TO AD ELEV

TWR 128.9

SAIDPUR, BANGLADESH

SAIDPUR

NDB RWY 34

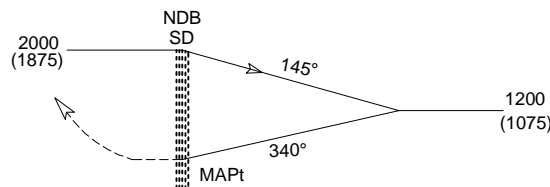


TRANSITION LEVEL FL 060
TRANSITION ALTITUDE 4000FT

MISSED APPROACH

CLIMB TO 2000 FT/610 m ON
TRACK 340° AND CONTACT ATC
FOR FURTHER INSTRUCTION

ELEV 125 FT



MET MINIMA
VIS 2800m

7 6 5 4 3 2 1 0 1 2 3 4 5 6 7 8 NM

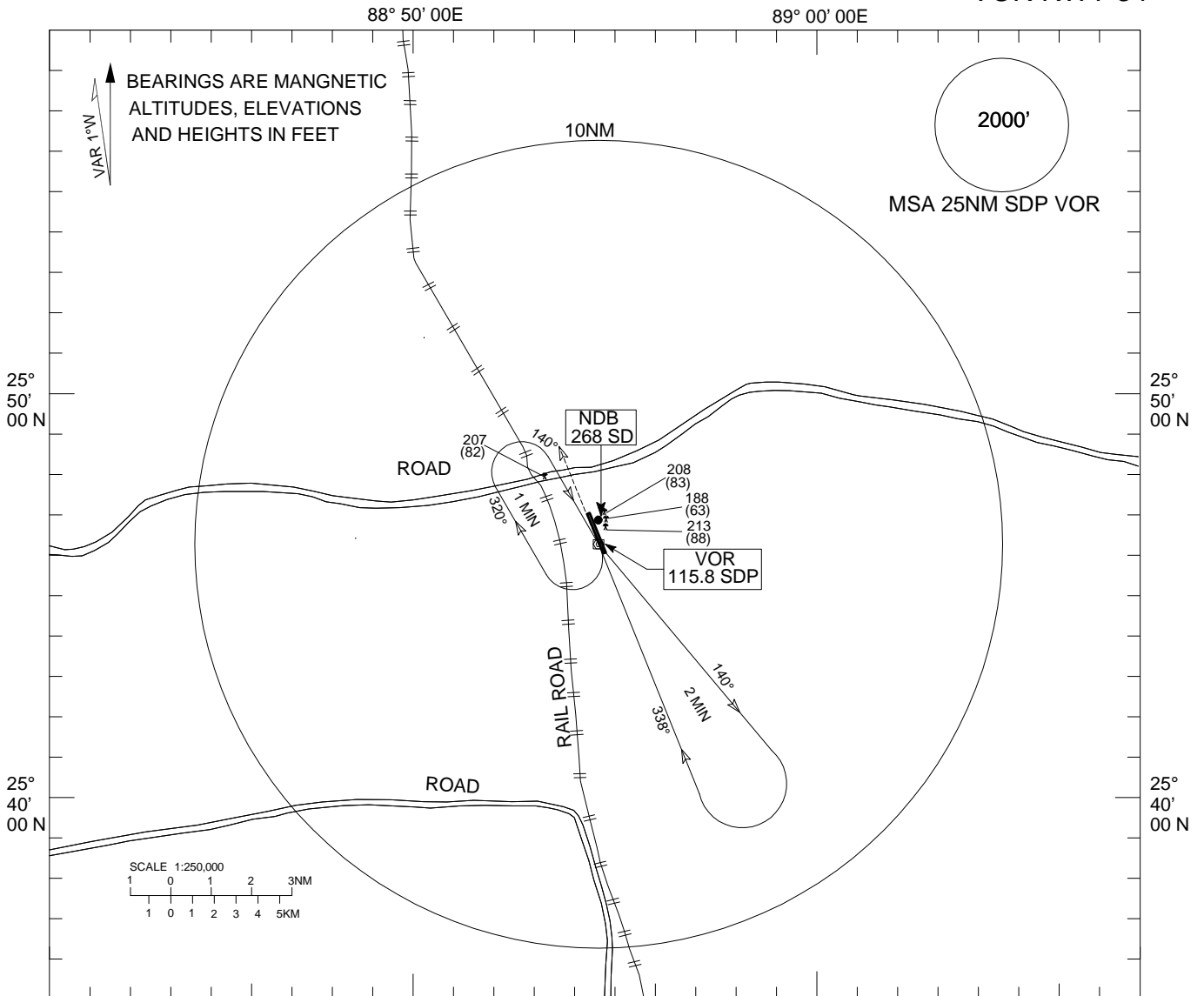
CATEGORY OF ACFT		A	B	C	D
OCA		550	550	550	
SPEED	KNOTS	90	120	150	

INSTRUMENT
APPROACH
CHART-ICAO

ELEV 125 FT
HEIGHTS RELATED
TO AD ELEV

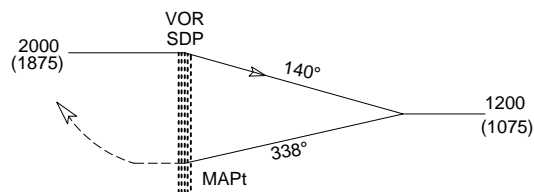
TWR 128.9

SAIDPUR, BANGLADESH
SAIDPUR
VOR RWY 34



TRANSITION LEVEL FL 060
TRANSITION ALTITUDE 4000FT

MISSED APPROACH
CLIMB TO 2000 FT/610 m ON
TRACK 338° AND CONTACT ATC
FOR FURTHER INSTRUCTION
ELEV 125 FT



MET MINIMA VIS 2800m	7 6 5 4 3 2 1 0 1 2 3 4 5 6 7 8 NM							
CATEGORY OF ACFT	A	B	C	D				
O C A	550	550	550					
SPEED	KNOTS	90	120	150				