

AIP
BANGLADESH

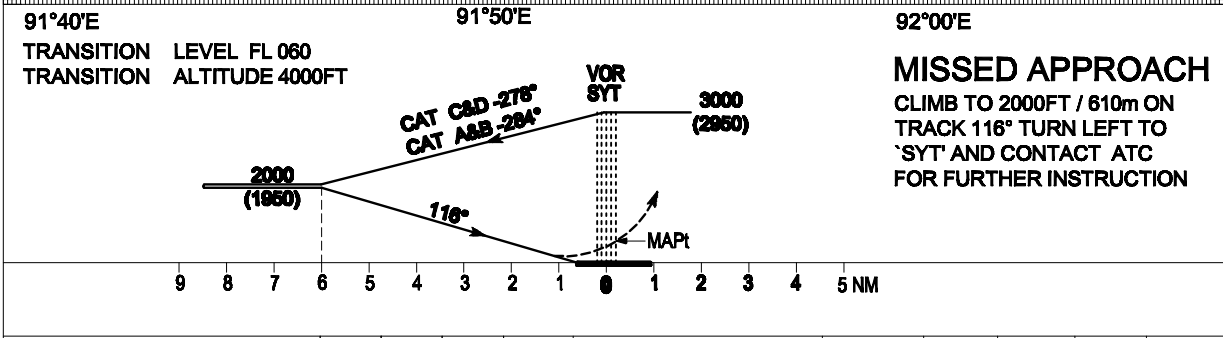
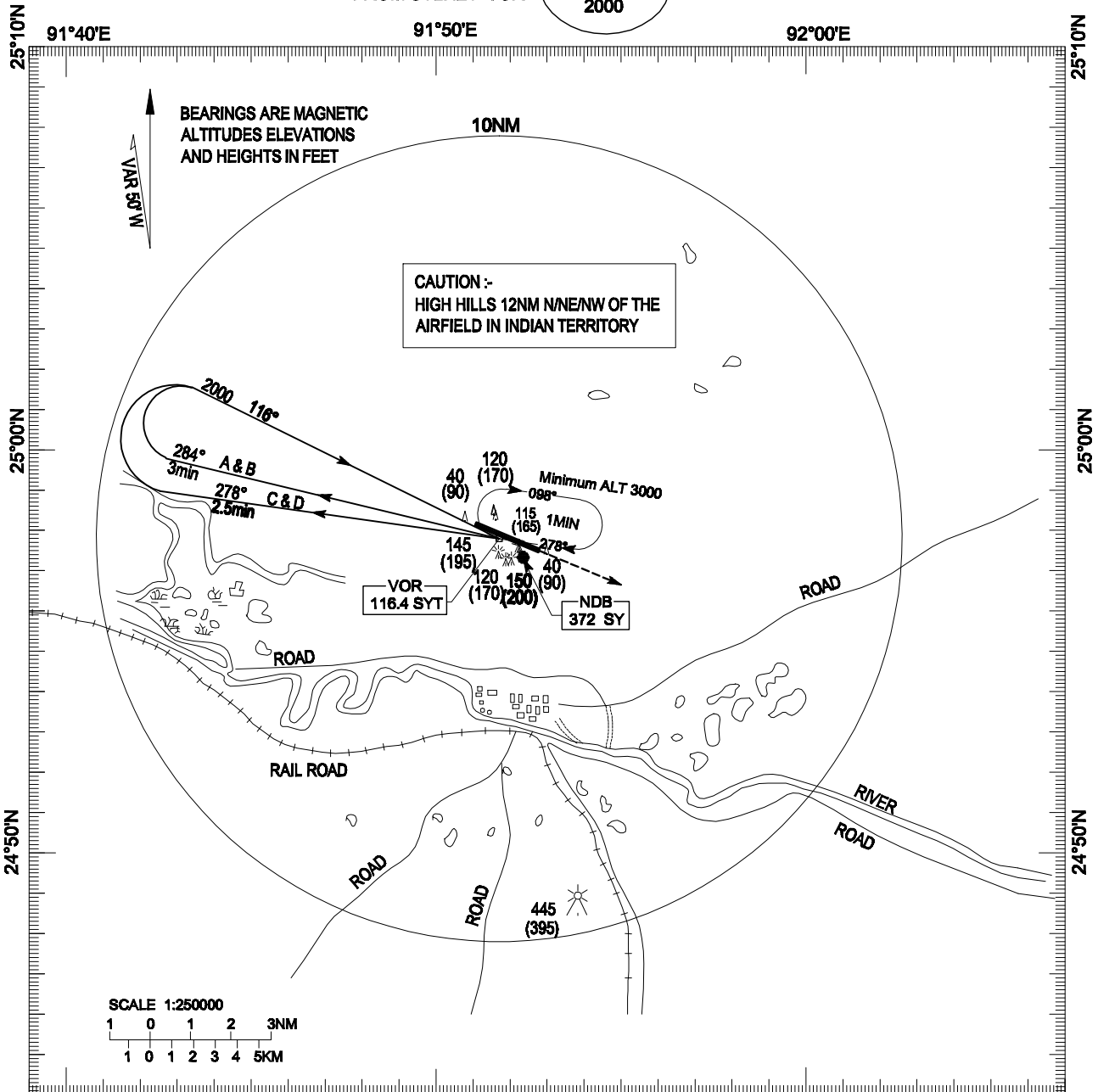
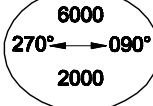
VGSY AD 2 - 13
16 OCT 2014

INSTRUMENT
APPROACH
CHART- ICAO

ELEV 50FT
HEIGHTS RELATED
TO AD ELEV
MSA 25 NM
FROM SYLHET VOR

TWR 122.9

SYLHET, BANGLADESH
OSMANI INTERNATIONAL
VOR RWY 11



CATEGORY OF ACFT		A	B	C	D	CAT		A	B	C	D
OCA		420 (370)	420 (370)	420 (370)	420 (370)	SPEED	KNOTS	90	120	150	180
MET MINIMA	Visibility (m)	1600	2000	2400	2800	RATE OF DESCENT/GS	FT/MIN	480	635	795	955

AIP
BANGLADESH

VGSY AD 2 - 17
16 OCT 2014

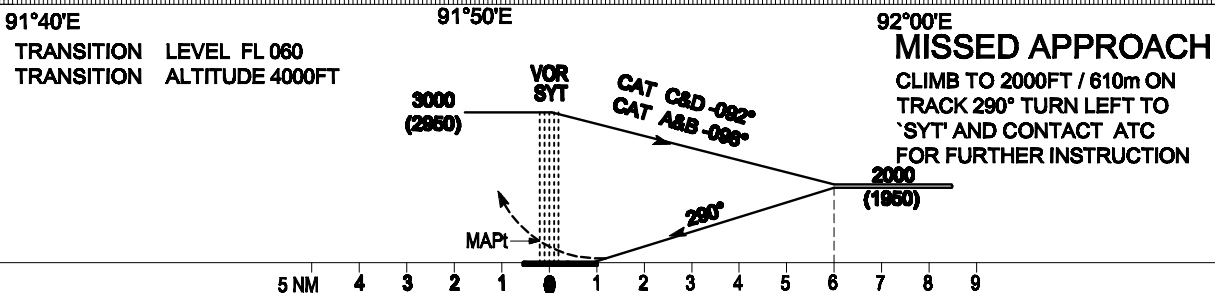
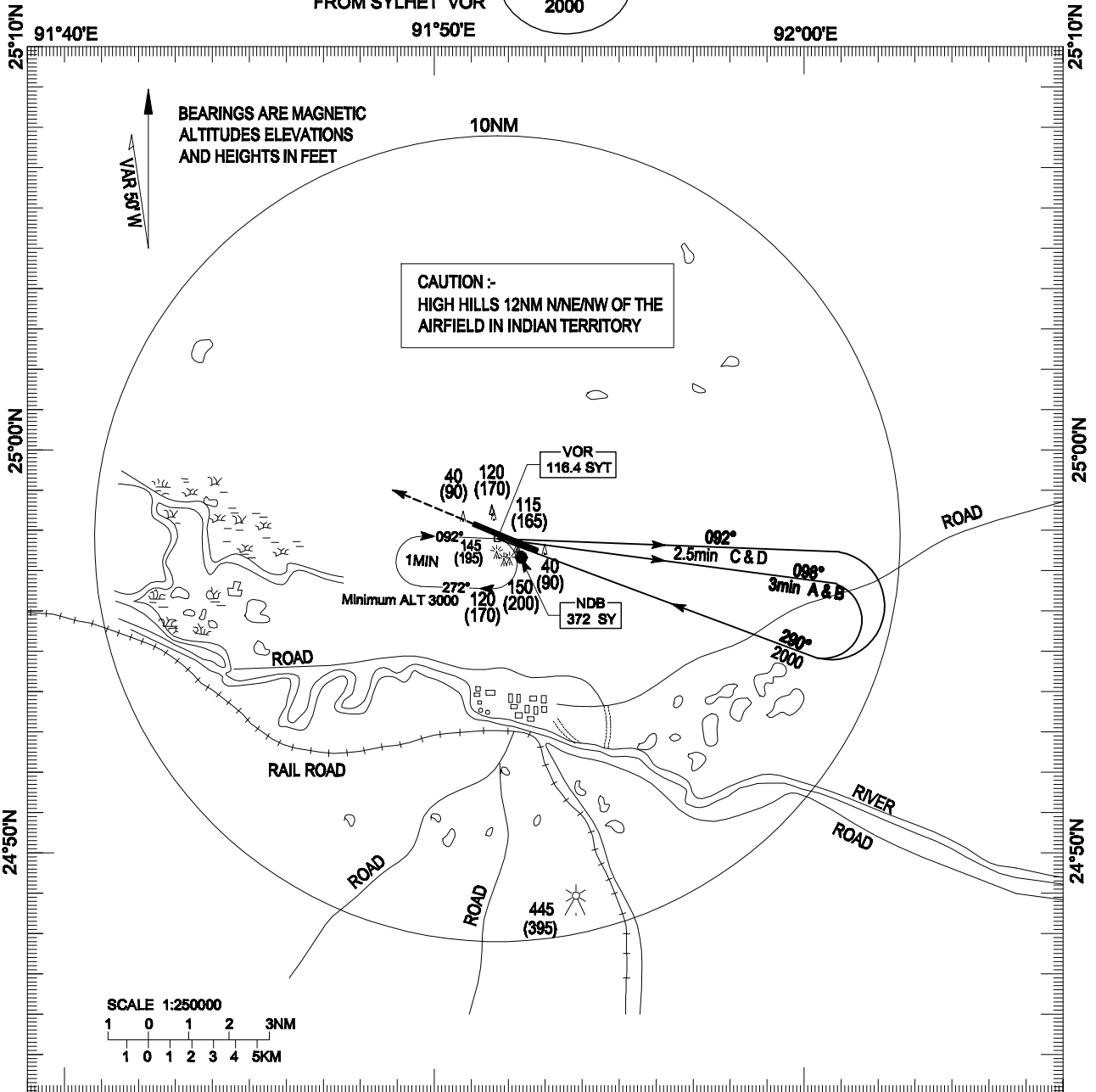
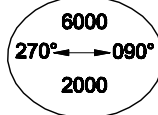
INSTRUMENT APPROACH
CHART- ICAO

ELEV 50FT
HEIHGTS RELATED
TO AD ELEV

TWR 122.9

SYLHET, BANGLADESH
OSMANI INTERNATIONAL
VOR RWY 29

MSA 25 NM
FROM SYLHET VOR



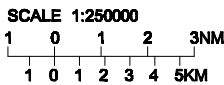
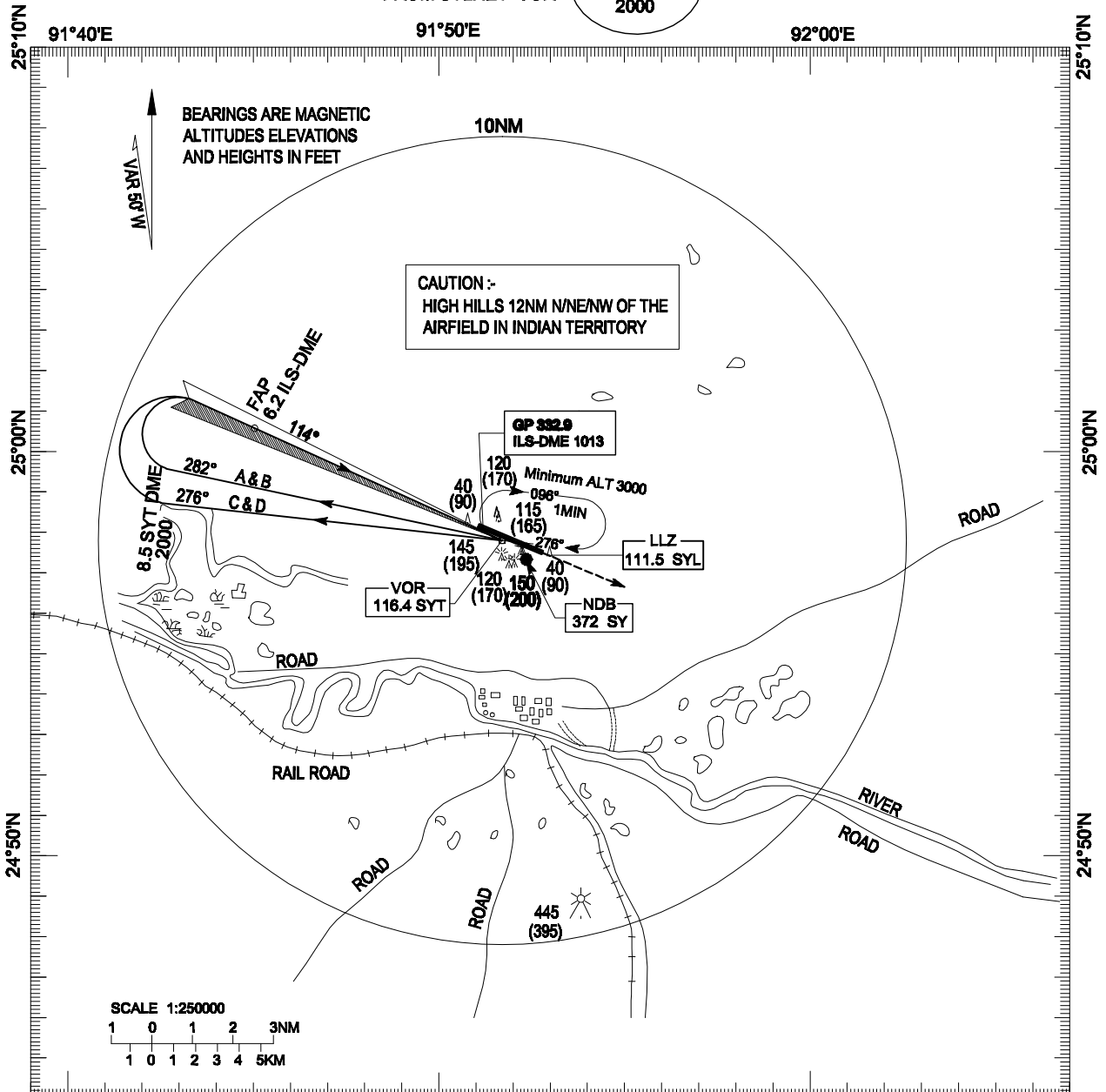
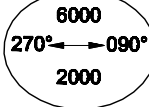
CATEGORY OF ACFT		A	B	C	D	CAT		A	B	C	D	
OCA		420 (370)	420 (370)	420 (370)	420 (370)	SPEED		KNOTS	90	120	150	180
MET MINIMA	Visibility (m)	1600	2000	2400	2800	RATE OF DESCENT/GS		FT/MIN	480	635	795	955

AIP
 BANGLADESH
 INSTRUMENT
 APPROACH
 CHART- ICAO

ELEV 50FT
 HEIHGTS RELATED
 TO AD ELEV MSA 25 NM
 FROM SYLHET VOR

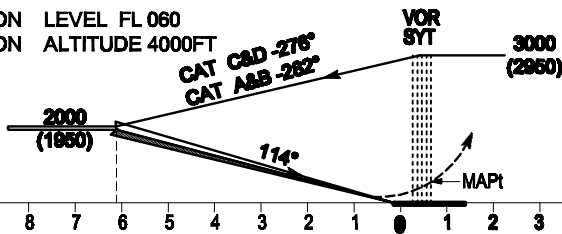
TWR 122.9

VGSY AD 2 - 19
 16 OCT 2014
 SYLHET, BANGLADESH
 OSMANI INTERNATIONAL
 VOR/ILS/DME RWY 11



91°40'E 91°50'E 92°00'E

TRANSITION LEVEL FL 060
 TRANSITION ALTITUDE 4000FT



MISSED APPROACH
 CLIMB TO 2000FT / 610m ON
 TRACK 114° TURN LEFT TO
 'SYT' AND CONTACT ATC
 FOR FURTHER INSTRUCTION

9 8 7 6 5 4 3 2 1 0 1 2 3 4 5 NM

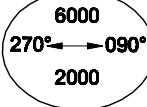
CATEGORY OF ACFT		A	B	C	D	CAT		A	B	C	D
OCA(OCH)	FULL	230 (180)	240 (190)	250 (200)	260 (210)	SPEED	KNOTS	90	120	150	180
	GP OUT	350	350	350	350	RATE OF DESCENT	FT/MIN	480	635	795	955
						MET MINIMA (m)	FULL	VIS: 800m, RVR: 800m			
						ALS OUT	VIS: 1400m				
						GP OUT	2000m(CAT A,B) & 2800m(CAT C,D)				

AIP
 BANGLADESH
 INSTRUMENT
 APPROACH
 CHART- ICAO

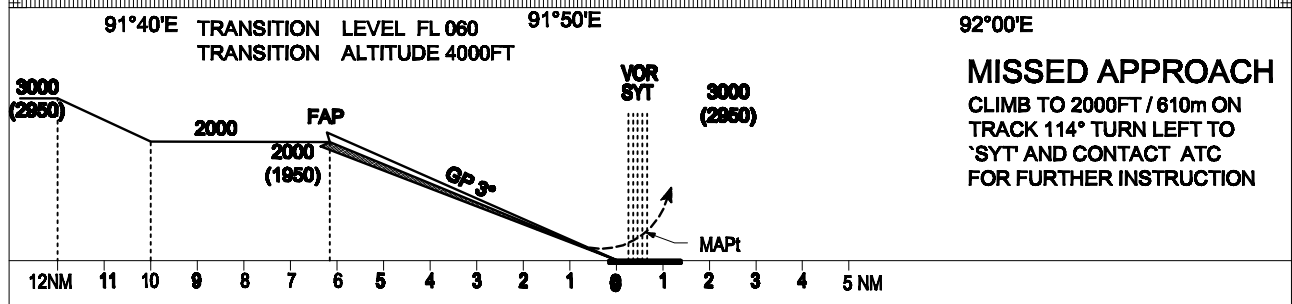
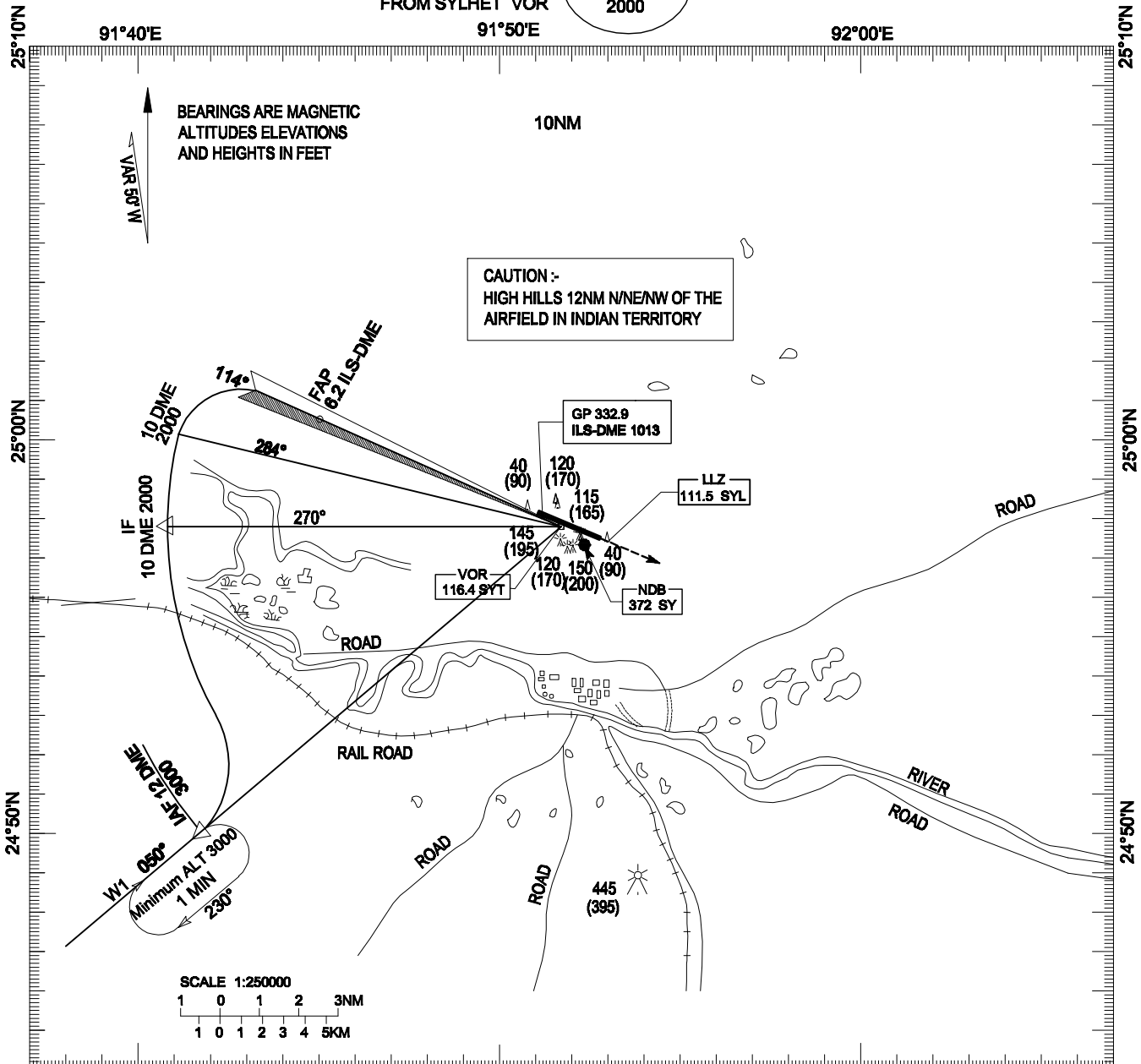
ELEV 50FT
 HEIHGTS RELATED
 TO AD ELEV

MSA 25 NM
 FROM SYLHET VOR

TWR 122.9



VGSY AD 2 - 21
 16 OCT 2014
 SYLHET, BANGLADESH
 OSMANI INTERNATIONAL
 VOR/ILS/DME-ARC RWY 11



CATEGORY OF ACFT		A	B	C	D	CAT	KNOTS	A	B	C	D
OCA(OCH)	FULL	230 (180)	240 (190)	250 (200)	260 (210)			SPEED	90	120	150
	GP OUT	350	350	350	350	RATE OF DESCENT	480	635	795	955	
						MET MINIMA (m)	FULL	VIS: 800m, RVR: 800m			
							ALS OUT	VIS: 1400m			
							GP OUT	2000m(CAT A,B) & 2800m(CAT C,D)			