

---

PEOPLE'S REPUBLIC OF BANGLADESH

TEL:+88-02-8901904-19/ 3409  
FAX: +88 02 8901411  
AFS: VGHQYOYX  
E-mail: adaishq@caab.gov.bd

Aeronautical Information Services  
Civil Aviation Authority, Bangladesh  
Headquarters, Kurmitola,  
Dhaka-1229, Bangladesh

AIP Supplement

**AIP SUPP**

04/18  
19 JULY 2018

---

**EFFECTIVE DATE: 190000 UTC JULY 2018.**

PUBLICATION DATE: 21 JUN 2018.

**SUBJECT: VOR & VOR-DME APPROACH PROCEDURES FOR  
RWY-16 & RWY-34 AT JESSORE AIRPORT, JESSORE.**

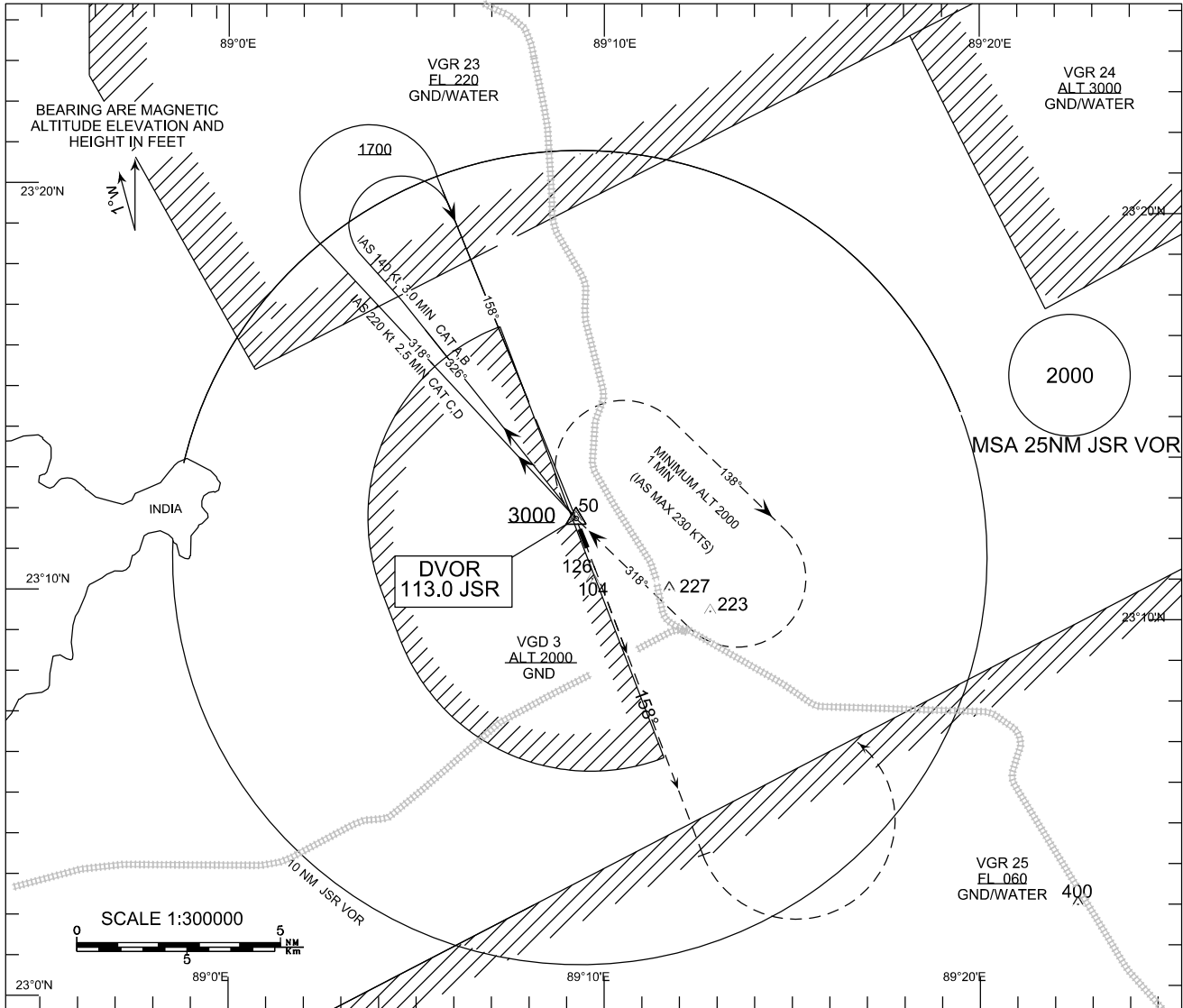
1. Due to installation of New DVOR-DME at Jessore Airport, Jessore all approaches relating to old VOR have been reproduced. The individual Approach Procedure for both RWY16 and RWY34, including procedure description, are given in the concern approach chart in the attachment with this cover page. The names of the approaches are given below:
  - a. Instrument Approach Procedure for VOR X RWY16- Attachment 'A1-B1'
  - b. Instrument Approach Procedure for VOR Y RWY16- Attachment 'A2-B2'
  - c. Instrument Approach Procedure for VOR Z RWY16- Attachment 'A3-B3'
  - d. Instrument Approach Procedure for VOR X RWY34- Attachment 'A4-B4'
  - e. Instrument Approach Procedure for VOR Y RWY34- Attachment 'A5-B5'
  - f. Instrument Approach Procedure for VOR Z RWY34-Attachment 'A6-B6'
2. Since some portion of all approach procedures penetrates the Special Use of Airspaces (VGR23 & VGR25), the appropriate separation between military and civil aircraft shall be ensured by the coordination between JSR TWR and BAF.
3. **CANCELLATION**  
This AIP Supplement will be cancelled when the contents will be incorporated into AIP Bangladesh.

INSTRUMENT  
APPROACH  
CHART - ICAO

AD ELEV 20 (ft)  
OCH RELATED TO  
THR RWY 16-ELEV 20(ft)

TWR:123.2 MHZ (PRI)  
123.9 MHZ (SRY)  
SMC:121.8 MHZ

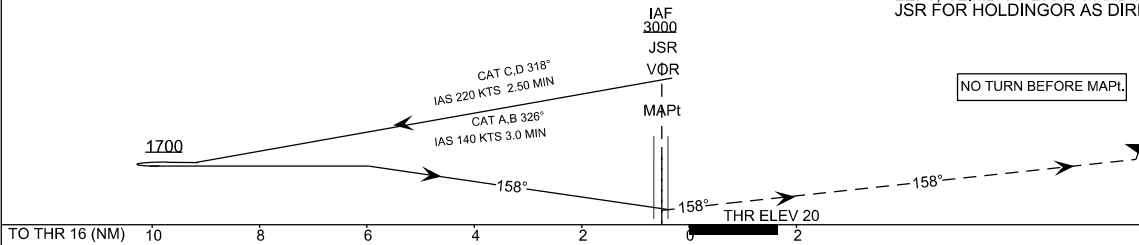
JESSORE,BANGLADESH  
JESSORE AIRPORT  
VOR X RWY16



TRANSITION LEVEL FL 060  
TRANSITION ALTITUDE 4000FT

MISSED APPROACH:

CLIMB TO 1500FT ON TRACK 158° THEN TURN LEFT, CLIMB TO 2000FT AND PROCEED TO JSR FOR HOLDING OR AS DIRECTED BY ATC.



| CATEGORY OF ACFT | A        | B | C | D |
|------------------|----------|---|---|---|
| OCA(OCH)         | 350(330) |   |   |   |

| MINIMA         | BALS | NALS |
|----------------|------|------|
| VISIBILITY (m) | 1700 | 2000 |
| RVR (m)        | 1300 | 1500 |

| CATEGORY OF ACFT   |        | A   | B   | C   | D   |
|--------------------|--------|-----|-----|-----|-----|
| SPEED              | KNOTS  | 90  | 120 | 150 | 180 |
| RATE OF DESCENT/GS | FT/MIN | 478 | 637 | 796 | 955 |

VOR X RWY 16 PROCEDURE  
JESSORE AIRPORT (VGJR)

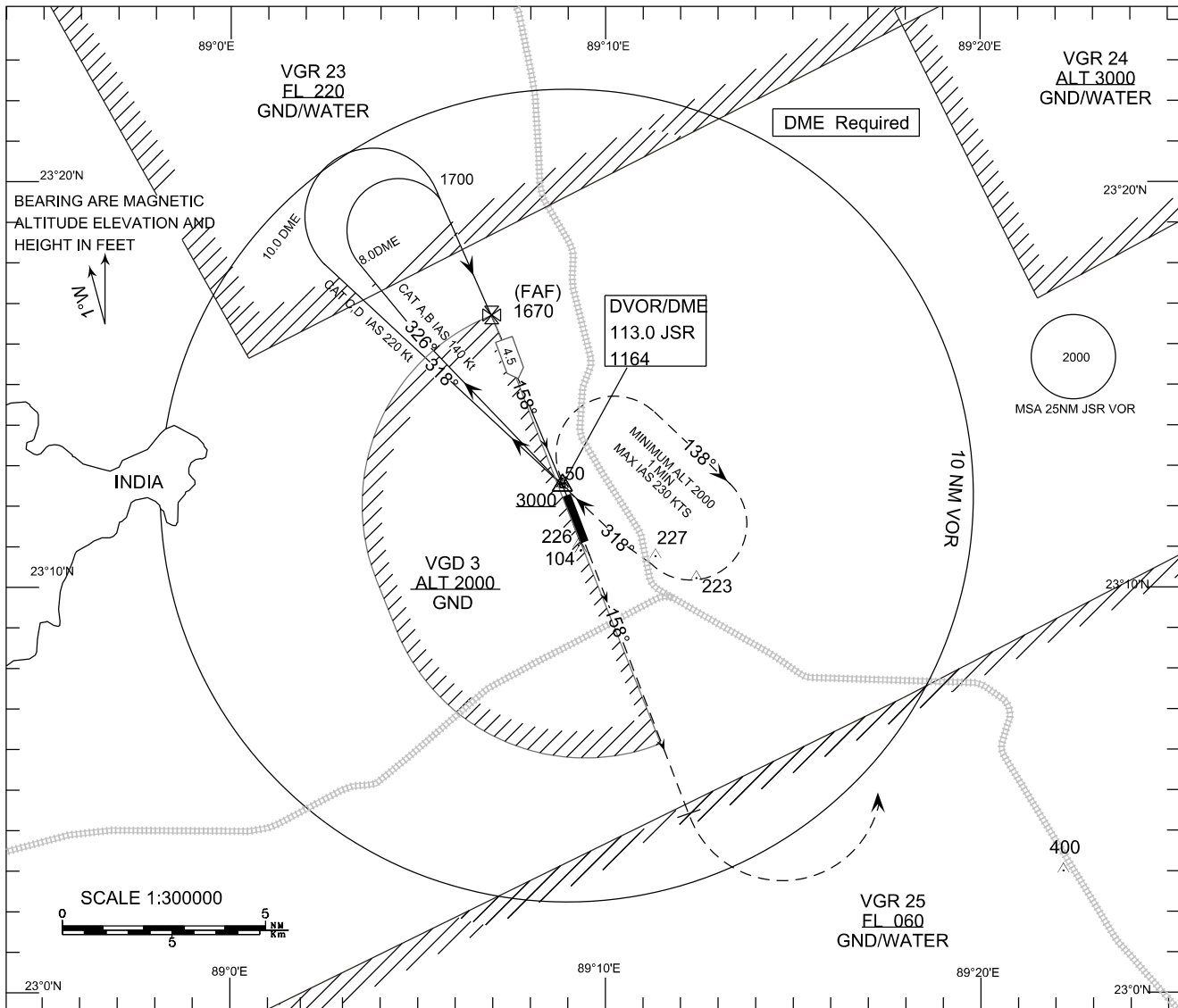
|     |                         |  |
|-----|-------------------------|--|
| 1   | Holding                 |  |
| 1.1 | VOR (113.0 JSR)         | One minute right hand racetrack pattern, inbound track 318 DEG MAG, MINIMUM HOLDING ALTITUDE 2000 ft.  |
| 2   | Procedure:              |  |
| 2.1 | From<br>VOR (113.0 JSR) | Proceed out bound on track 326 DEG MAG for CAT A/B and 318 DEG MAG for CAT C descending to 1700 ft. After 3 min (for CAT A & B) or 2.5 min (for CAT C & D) commence base turn right to establish final approach track 158 DEG MAG. Descend to MDA/H. |
| 3   | OCA/OCH                 | CAT A/B/C/D : 350 ft (330 ft)  |
|     | MAPt                    | JSR VOR  |

INSTRUMENT  
APPROACH  
CHART - ICAO

AD ELEV 20 (ft)  
OCH RELATED TO  
THR RWY 16-ELEV 20(ft)

TWR:123.2 MHZ (PRI)  
123.9 MHZ (SRY)  
SMC : 121.8 MHZ

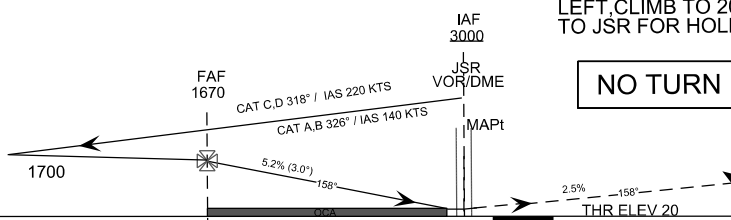
JESSORE, BANGLADESH  
JESSORE AIRPORT  
VOR Y RWY 16



TRANSITION LEVEL FL 060  
TRANSITION ALTITUDE 4000FT

MISSED APPROACH:

CLIMB TO 1500FT ON TRACK 158° THEN TURN  
LEFT, CLIMB TO 2000FT AND PROCEED DIRECT  
TO JSR FOR HOLDING OR AS DIRECTED BY ATC.



TO THR 16 (NM)

TO JSR (DME)

| CATEGORY OF ACFT  | A        | B       | C       | D       |         |
|-------------------|----------|---------|---------|---------|---------|
| OCA(OCH)          | 320(300) |         |         |         |         |
| DISTANCE (FM JSR) | 4.5 DME  | 3.5 DME | 2.5 DME | 1.5 DME | 0.5 DME |
| ALTITUDE          | 1670     | 1350    | 1030    | 710     | 390     |
| (HEIGHT)          | (1650)   | (1330)  | (1010)  | (690)   | (370)   |

| CATEGORY OF ACFT   | A     | B     | C     | D     |
|--------------------|-------|-------|-------|-------|
| SPEED              | 90    | 120   | 150   | 180   |
| RATE OF DESCENT/GS | 478   | 637   | 796   | 955   |
| FAF TO THR16       | 03:36 | 02:42 | 02:09 | 01:48 |

| MINIMA     | BALS | NALS |
|------------|------|------|
| VISIBILITY | 1500 | 1800 |
| RVR        | 1200 | 1400 |

VOR Y RWY16 PROCEDURE (DME REQUIRED)  
JESSORE AIRPORT (VGJR)

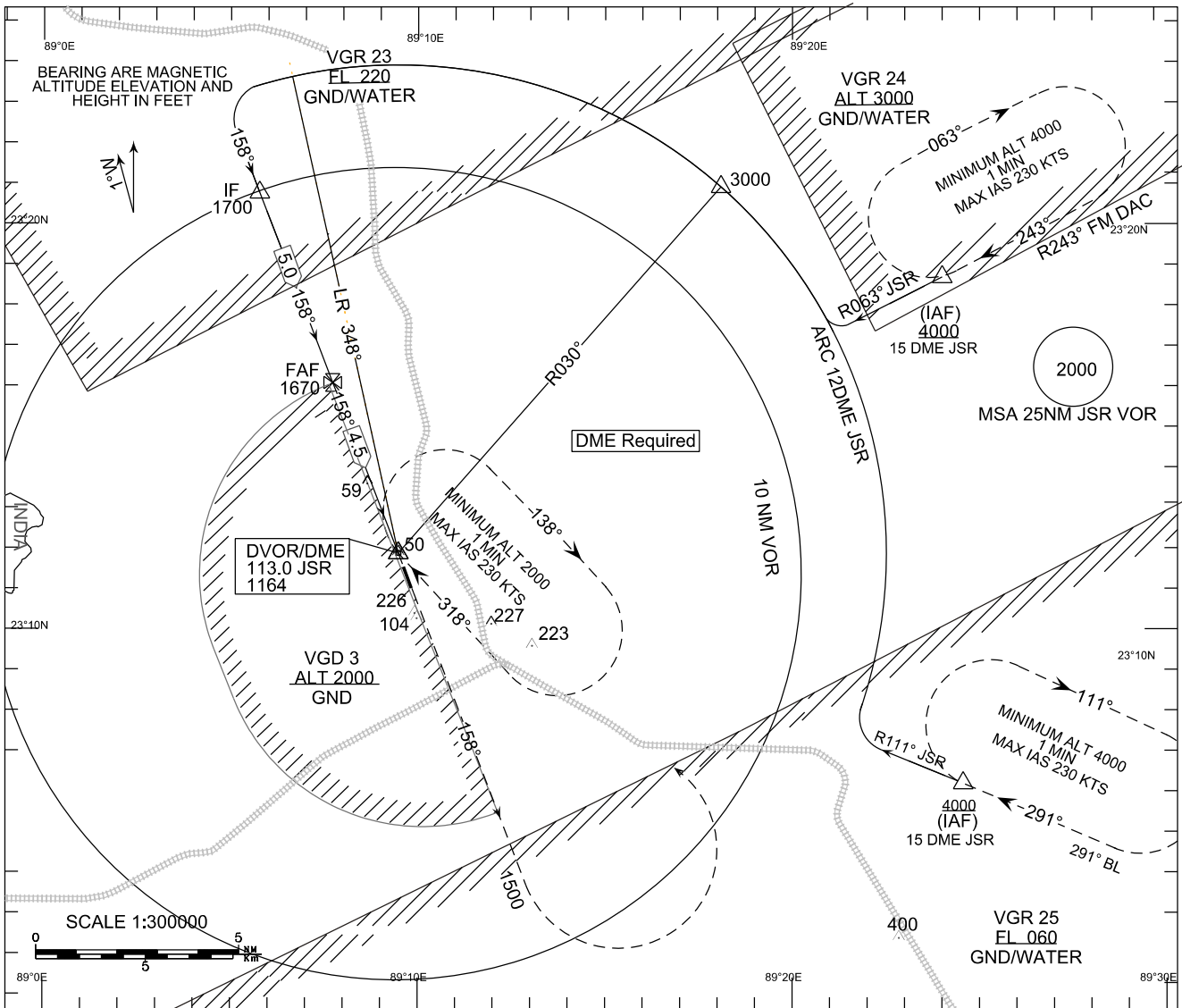
|     |                         |  |
|-----|-------------------------|--|
| 1   | Holding                 |  |
| 1.1 | VOR (113.0 JSR)         | One minute right hand racetrack pattern, inbound track 318 DEG MAG, MINIMUM HOLDING ALTITUDE 2000 ft.  |
| 2   | Procedure:              |  |
| 2.1 | From<br>VOR (113.0 JSR) | Proceed out bound on track 326 DEG MAG for CAT A/B and 318 DEG MAG for CAT C descending to 1700 ft. AT 8 DME commence base turn right to establish final approach track 158 DEG MAG. AT FAF 4.5 DME (5 NM THR) descend to MDA/H. |
| 3   | FAF                     | 4. 5 DME FM JSR VOR-DME (5 NM THR)   |
|     | Altitude at FAF         | 1670 ft  |
|     | Descent Gradient        | 5.2% (3 DEG)   |
| 4   | OCA/OCH                 | CAT A/B/C/D : 320 ft (300 ft)  |
|     | MAPt                    | JSR VOR  |

INSTRUMENT  
APPROACH  
CHART - ICAO

AD ELEV 20 (ft)  
OCH RELATED TO  
THR RWY 16-ELEV 20(ft)

TWR: 123.2 MHZ (PRI)  
123.9 MHZ (SRY)  
SMC: 121.8 MHZ

JESSORE AIRPORT (VGJR)  
JESSORE AIRPORT  
VOR Z RWY 16

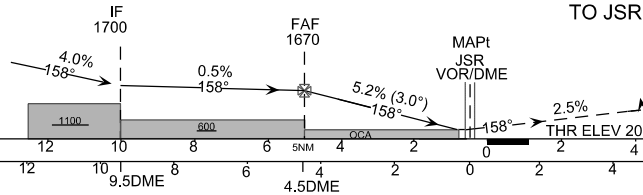


TRANSITION LEVEL FL 060  
TRANSITION ALTITUDE 4000FT

MISSED APPROACH:

CLIMB TO 1500FT ON TRACK 158° THEN TURN LEFT, CLIMB TO 2000FT AND PROCEED DIRECT TO JSR FOR HOLDING OR AS DIRECTED BY ATC.

NO TURN BEFORE MAPt.



| CATEGORY OF ACFT  | A        | B       | C       | D       |         |
|-------------------|----------|---------|---------|---------|---------|
| OCA(OCH)          | 320(300) |         |         |         |         |
| DISTANCE (FM JSR) | 4.5 DME  | 3.5 DME | 2.5 DME | 1.5 DME | 0.5 DME |
| ALTITUDE          | 1670     | 1350    | 1030    | 710     | 390     |
| (HEIGHT)          | (1650)   | (1330)  | (1010)  | (690)   | (370)   |

| CATEGORY OF ACFT   | A     | B     | C     | D     |       |
|--------------------|-------|-------|-------|-------|-------|
| SPEED              | 90    | 120   | 150   | 180   |       |
| RATE OF DESCENT/GS | 478   | 637   | 796   | 955   |       |
| FAF TO THR16       | MIN:S | 03:36 | 02:42 | 02:09 | 01:48 |

| MINIMA     | BALS | NALS |
|------------|------|------|
| VISIBILITY | 1500 | 1800 |
| RVR        | 1200 | 1400 |

VOR Z RWY16 PROCEDURE PROCEDURE (DME REQUIRED)  
JESSORE AIRPORT (VGJR).

|     |                       |  |
|-----|-----------------------|--|
| 1   | Holding               |  |
| 1.1 | DVOR (113.0 JSR)      | One minute right hand racetrack pattern, inbound track 318 DEG MAG, MINIMUM HOLDING ALTITUDE 2000 ft.  |
| 2   | Procedure:            |  |
| 2.1 | From DVOR (113.0 JSR) | From route turn right and maintaining 4000 ft establish 12 DME on ARC, descend to 3000 ft and maintain. After crossing JSR Radial 030 DEG descend to 1700 ft and establish final approach track 158 DEG MAG. AT FAF 4.5 DME (5 NM THR) descend to MDA/H. |
| 3   | FAF                   | 4.5 DME FM JSR VOR-DME (5 NM THR)  |
|     | Altitude at FAF       | 1670 ft  |
|     | Descent Gradient      | 5.2% (3 DEG)   |
| 4   | OCA/OCH               | CAT A/B/C/D : 320 ft (300 ft)  |
|     | MAPt                  | JSR DVOR   |

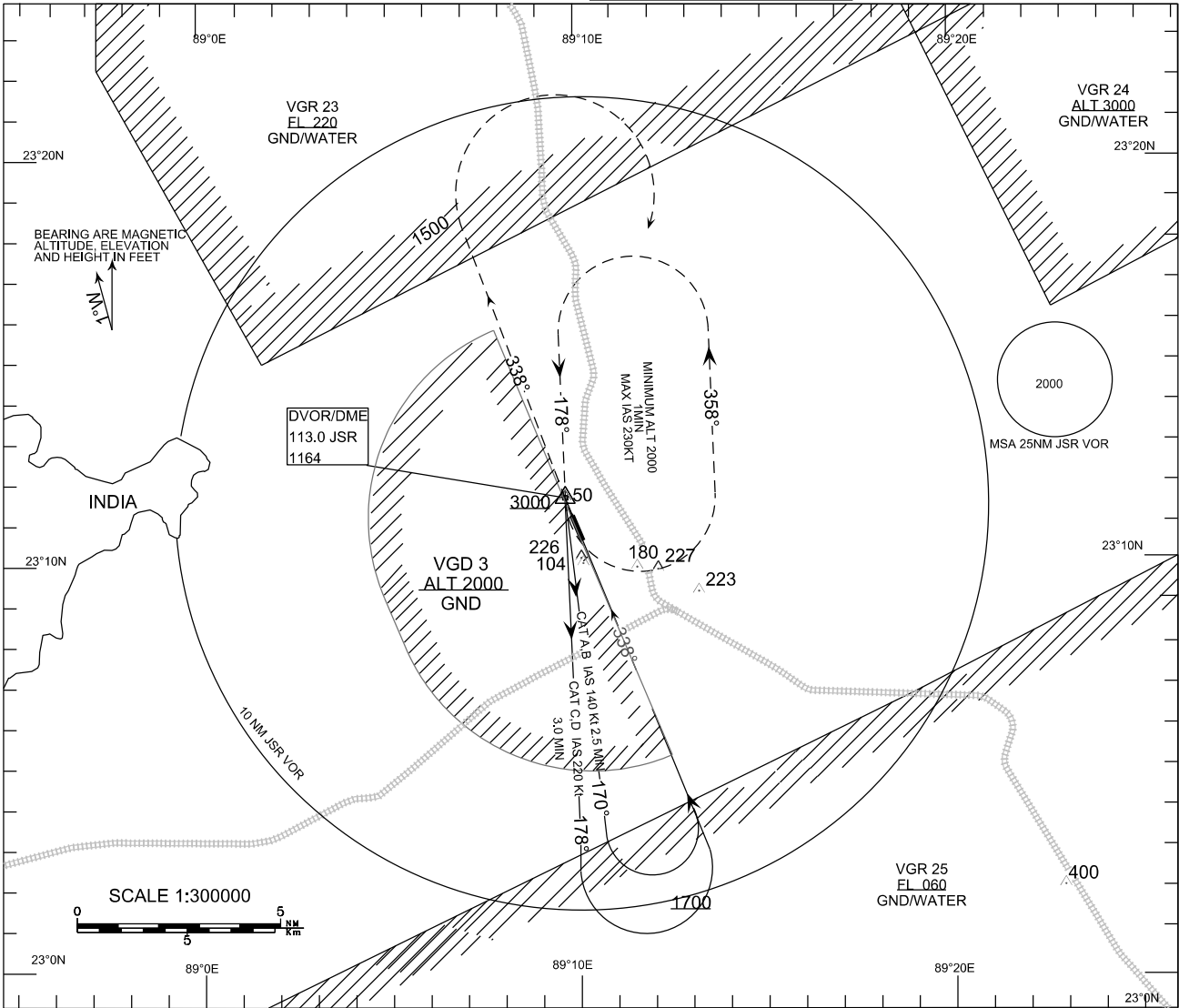
INSTRUMENT  
APPROACH  
CHART - ICAO

AD ELEV 20FT  
OCH RELATED TO  
THR RWY 34-ELEV 20FT

TWR: 123.2MHz (PRI)  
123.9MHz (SRY)  
SMC: 121.8MHz

JESSORE, BANGLADESH  
JESSORE AIRPORT

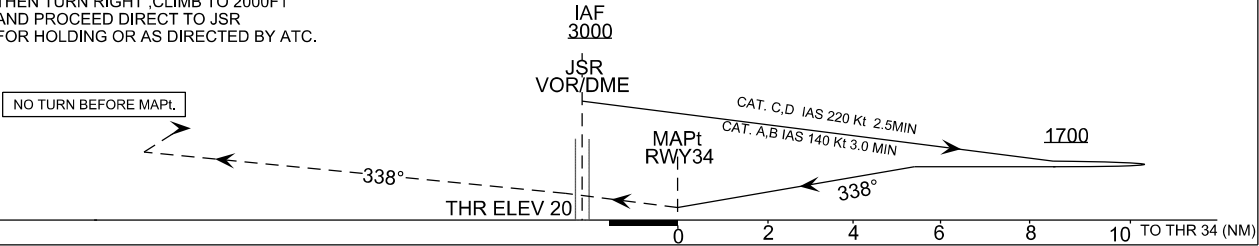
VOR X RWY 34



MISSED APPROACH :

CLIMB TO 1500FT ON TRACK 338°  
THEN TURN RIGHT ,CLIMB TO 2000FT  
AND PROCEED DIRECT TO JSR  
FOR HOLDING OR AS DIRECTED BY ATC.

TRANSITION LEVEL FL 060  
TRANSITION ALTITUDE 4000FT



| CATEGORY OF ACFT   | A        | B   | C   | D   |     |
|--------------------|----------|-----|-----|-----|-----|
| OCA(OCH)           | 410(390) |     |     |     |     |
| CATEGORY OF ACFT   | A        | B   | C   | D   |     |
| SPEED              | KNOTS    | 90  | 120 | 150 | 180 |
| RATE OF DESCENT/GS | FT/MIN   | 478 | 637 | 796 | 955 |

|            |      |
|------------|------|
| MET MINIMA | NALS |
| VISIBILITY | 2300 |
| RVR        | 1900 |



VOR X RWY34 PROCEDURE  
JESSORE AIRPORT (VGJR)

|     |                         |  |
|-----|-------------------------|--|
| 1   | Holding                 |  |
| 1.1 | VOR (113.0 JSR)         | One minute left hand racetrack pattern, inbound track 178 DEG MAG, MINIMUM HOLDING ALTITUDE 2000 ft.   |
| 2   | Procedure:              |  |
| 2.1 | From<br>VOR (113.0 JSR) | Proceed out bound on track 170 DEG MAG for CAT A/B and 178 DEG MAG for CAT C/D descending to 1700 ft. After 3 min (for CAT A & B) or 2.5 min (for CAT C/D ) commence base turn left to establish final approach track 338 DEG MAG. Descend to MDA/H. |
| 3   | OCA/OCH                 | CAT A/B/C/D : 410 ft (390 ft)  |
|     | MAPt                    | THR34  |

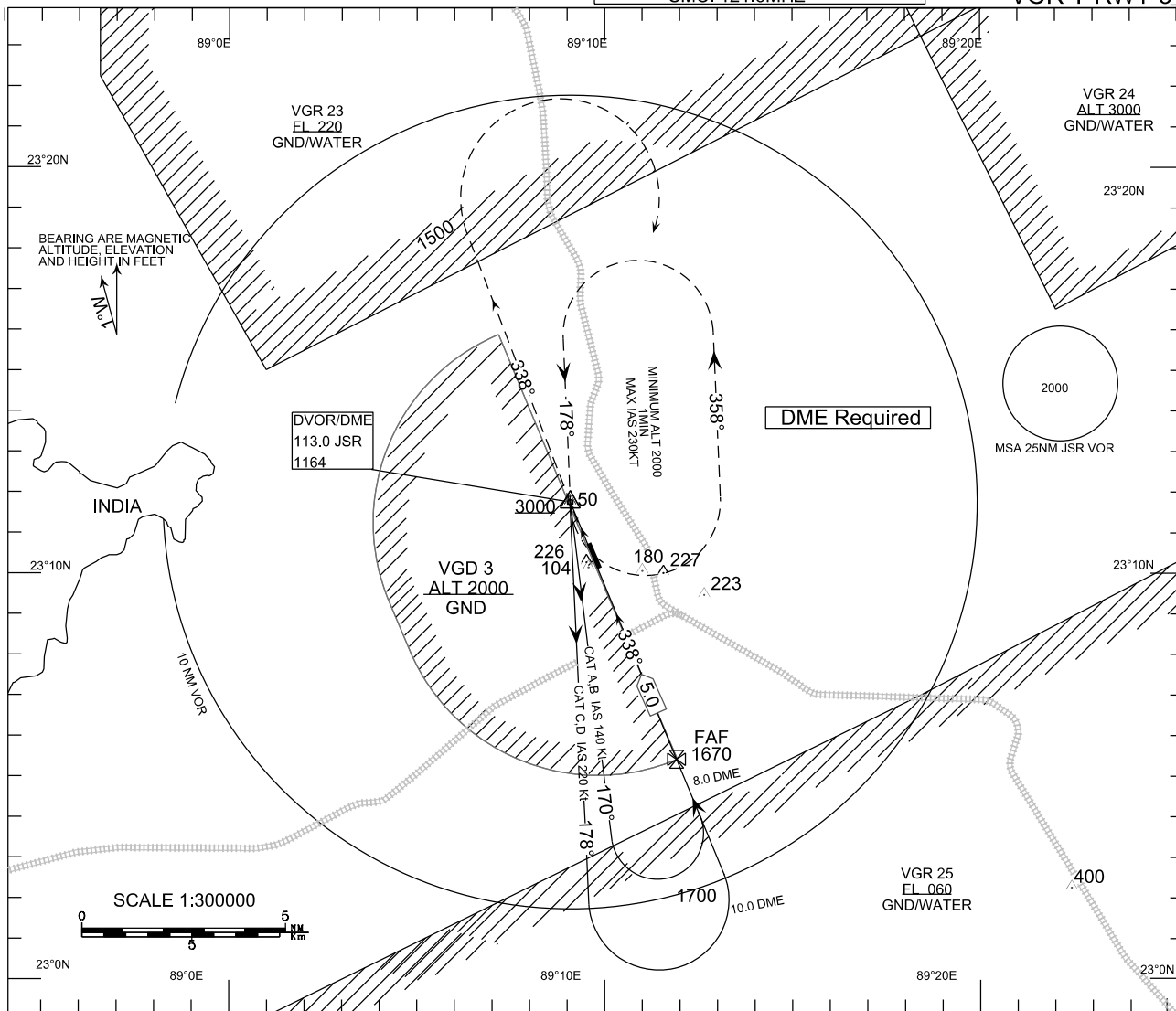
INSTRUMENT  
APPROACH  
CHART - ICAO

AD ELEV 20 (ft)  
OCH RELATED TO  
THR RWY 34-ELEV 20(ft)

TWR: 123.2 MHZ (PRI)  
123.9MHZ (SRY)  
SMC: 121.8MHZ

JESSORE, BANGLADESH  
JESSORE AIRPORT

VOR Y RWY 34

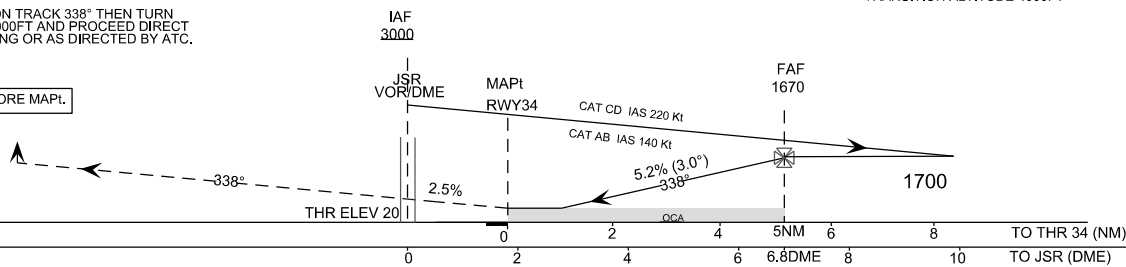


MISSED APPROACH:

CLIMB TO 1500FT ON TRACK 338° THEN TURN  
RIGHT CLIMB TO 2000FT AND PROCEED DIRECT  
TO JSR FOR HOLDING OR AS DIRECTED BY ATC.

TRANSITION LEVEL FL060  
TRANSITION ALTITUDE 4000FT

NO TURN BEFORE MAPt.



| CATEGORY OF ACFT  | A           | B           | C           | D         |           |
|-------------------|-------------|-------------|-------------|-----------|-----------|
| OCA(OCH)          | 380(360)    |             |             |           |           |
| DISTANCE (FM JSR) | 6.8 DME     | 5.8 DME     | 4.8 DME     | 3.8 DME   | 2.8 DME   |
| ALTITUDE (HEIGHT) | 1670 (1650) | 1350 (1330) | 1030 (1010) | 710 (690) | 390 (370) |

| CATEGORY OF ACFT   | A     | B     | C     | D     |
|--------------------|-------|-------|-------|-------|
| SPEED              | 90    | 120   | 150   | 180   |
| RATE OF DESCENT/GS | 478   | 637   | 796   | 955   |
| FAF TO THR23       | 03:36 | 02:42 | 02:09 | 01:48 |

| MET MINIMA | NALS |
|------------|------|
| VISIBILITY | 2100 |
| RVR        | 1700 |

VOR Y RWY34 PROCEDURE (DME REQUIRED)  
JESSORE AIRPORT (VGJR)

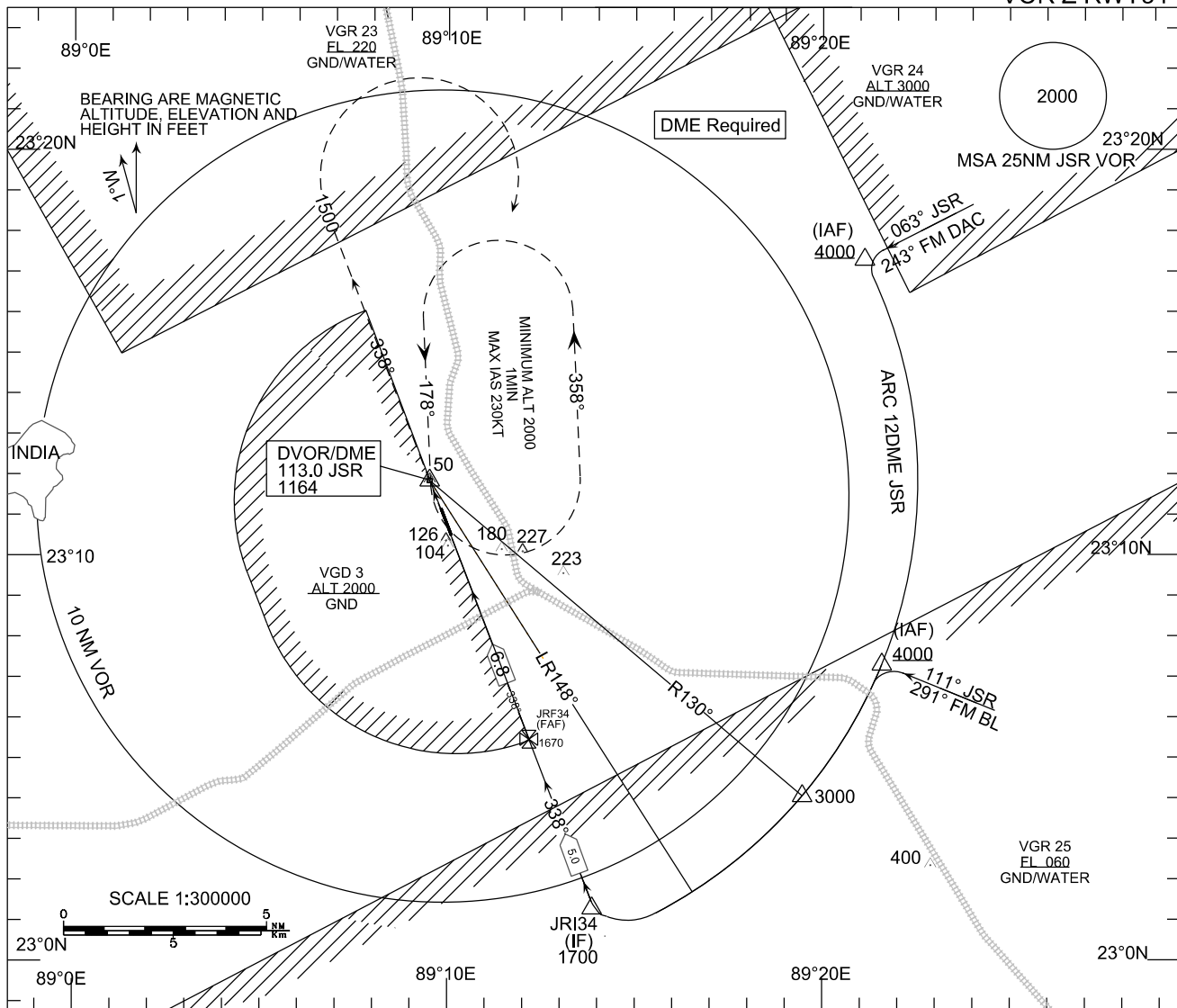
|     |                         |  |
|-----|-------------------------|--|
| 1   | Holding                 |  |
| 1.1 | VOR (113.0 JSR)         | One minute left hand racetrack pattern, inbound track 178 DEG MAG, MINIMUM HOLDING ALTITUDE 2000 ft.   |
| 2   | Procedure:              |  |
| 2.1 | From<br>VOR (113.0 JSR) | Proceed out bound on track 178 DEG MAG for CAT A/B and 170 DEG MAG for CAT C/D descending to 1700 ft. AT 8 DME commence base turn left to establish final approach track 338 DEG MAG. AT FAF 6.8 DME(5 NM THR) descend to MDA/H. |
| 3   | FAF                     | 6.8 DME FM JSR VOR-DME (5 NM THR)  |
|     | Altitude at FAF         | 1670 ft  |
|     | Descent Gradient        | 5.2% (3 DEG)   |
| 4   | OCA/OCH                 | CAT A/B/C/D : 380 ft (360 ft)  |
|     | MAPt                    | THR34  |

INSTRUMENT  
APPROACH  
CHART - ICAO

AD ELEV 20 (ft)  
OCH RELATED TO  
THR RWY 34-ELEV 20(ft)

TWR : 123.2 MHZ (PRI)  
123.9 MHZ (SRY)  
SMC : 121.8 MHZ

JESSORE, BANGLADESH  
JESSORE AIRPORT  
VOR Z RWY34

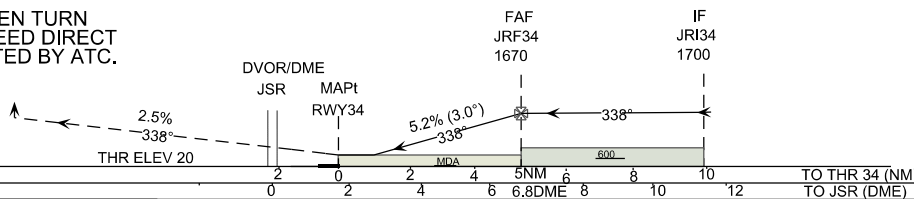


TRANSITION LEVEL FL 060  
TRANSITION ALTITUDE 4000FT

NO TURN BEFORE MAPt.

MISSED APPROACH:

CLIMB TO 1500FT ON TRACK 338° THEN TURN  
RIGHT, CLIMB TO 2000FT AND PROCEED DIRECT  
TO JSR FOR HOLDING OR AS DIRECTED BY ATC.



| CATEGORY OF ACFT  | A        | B       | C       | D       |
|-------------------|----------|---------|---------|---------|
| OCA(OCH)          | 380(360) |         |         |         |
| DISTANCE (FM JSR) | 6.8 DME  | 5.8 DME | 4.8 DME | 3.8 DME |
| ALTITUDE          | 1670     | 1350    | 1030    | 710     |
| (HEIGHT)          | (1650)   | (1330)  | (1010)  | (690)   |

| CATEGORY OF ACFT   | A     | B     | C     | D     |
|--------------------|-------|-------|-------|-------|
| SPEED              | 90    | 120   | 150   | 180   |
| RATE OF DESCENT/GS | 478   | 637   | 796   | 955   |
| FAF TO THR23       | 03:36 | 02:42 | 02:09 | 01:48 |

| MINIMA         | NALS |
|----------------|------|
| VISIBILITY (m) | 2100 |
| RVR (m)        | 1700 |

VOR Z RWY34 PROCEDURE (DME REQUIRED)  
JESSORE AIRPORT (VGJR).

|     |                       |   |
|-----|-----------------------|---|
| 1   | Holding               |   |
| 1.1 | DVOR (113.0 JSR)      | One minute left hand racetrack pattern, inbound track 178 DEG MAG, MINIMUM HOLDING ALTITUDE 2000 ft.  |
| 2   | Procedure:            |   |
| 2.1 | From DVOR (113.0 JSR) | From route turn left and establish 12 DME on ARC, descend to 3000 ft and maintain. After crossing JSR Radial 130 DEG descend to 1700 ft and establish final approach track 338 DEG MAG. AT FAF 6.8 DME (5 NM THR) descend to MDA/H. |
| 3   | FAF                   | 6.8 DME FM JSR VOR-DME (5 NM THR)   |
|     | Altitude at FAF       | 1670 ft   |
|     | Descent Gradient      | 5.2% (3 DEG)  |
| 4   | OCA/OCH               | CAT A/B/C/D : 380 ft (360 ft)   |
|     | MAPt                  | THR34   |